

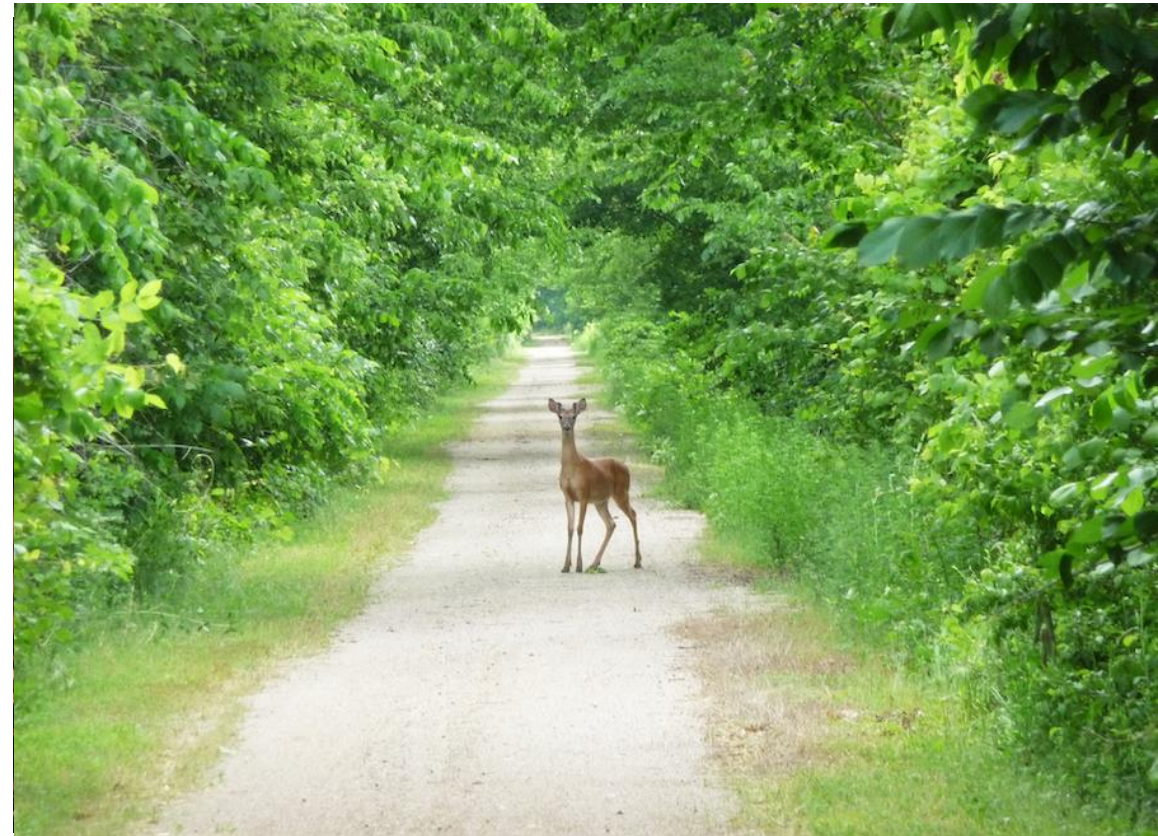


Sunflower Foundation



Trail Sustainability

March 12, 2024



Our Speakers



John Leahy

Thrive Allen County



Mike Goodwin

Kansas Trails Council



Chris Tilden

Friends of Lawrence Area
Trails (FLAT)



Brian Peterson

Park Management &
Conservation

Why Maintenance is Important

WHAT IS OUR GOAL?



What Does Maintenance Work Look Like?



- Trimming and Lopping
- Cutting fallen trees
- Rerouting trails
- Repairing erosion
- Mowing
- Spraying
- Maintaining trail amenities (signage, trail structures, art)

Trail Work Calendar

Late Spring and Summer

- Trimming & lopping, cutting fallen trees

Fall Through Early Spring

- Building new trails
- Trimming brush from the trail corridor
- Cutting fallen trees
- Repairing erosion
- Rerouting trails
- Blazing & trail signage

Power Equipment Comparison

String Trimmer

[4 Hours/Mile]

Every 2 Weeks

Brush Mower

[2 Hours/Mile]

Every 2 Weeks

Spray

[1 Hour/Mile]

Once or Twice

Per Season



Maintenance Efforts

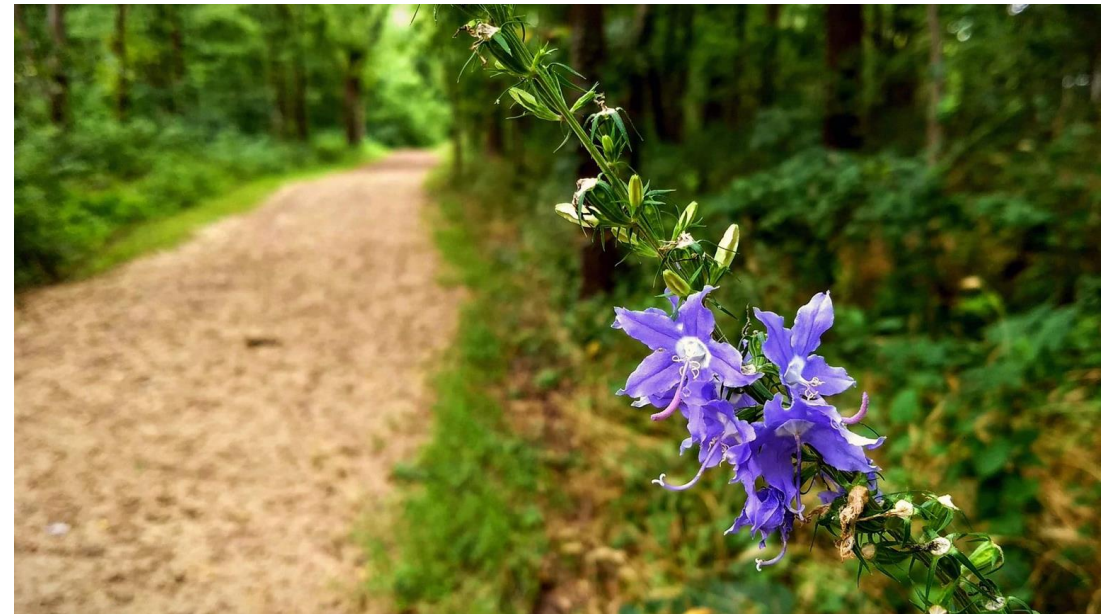
What a trail requires to be successful

Accessibility

- Work/ skill
- ADA
- Nature
- First Responders

Healthy Ecosystem

- Access to green space



Corridors & Brush Management



Maintaining Healthy Corridors

- Makes the trails easier to navigate
- Helps with the operation of trail maintenance equipment

WATER ALWAYS WINS

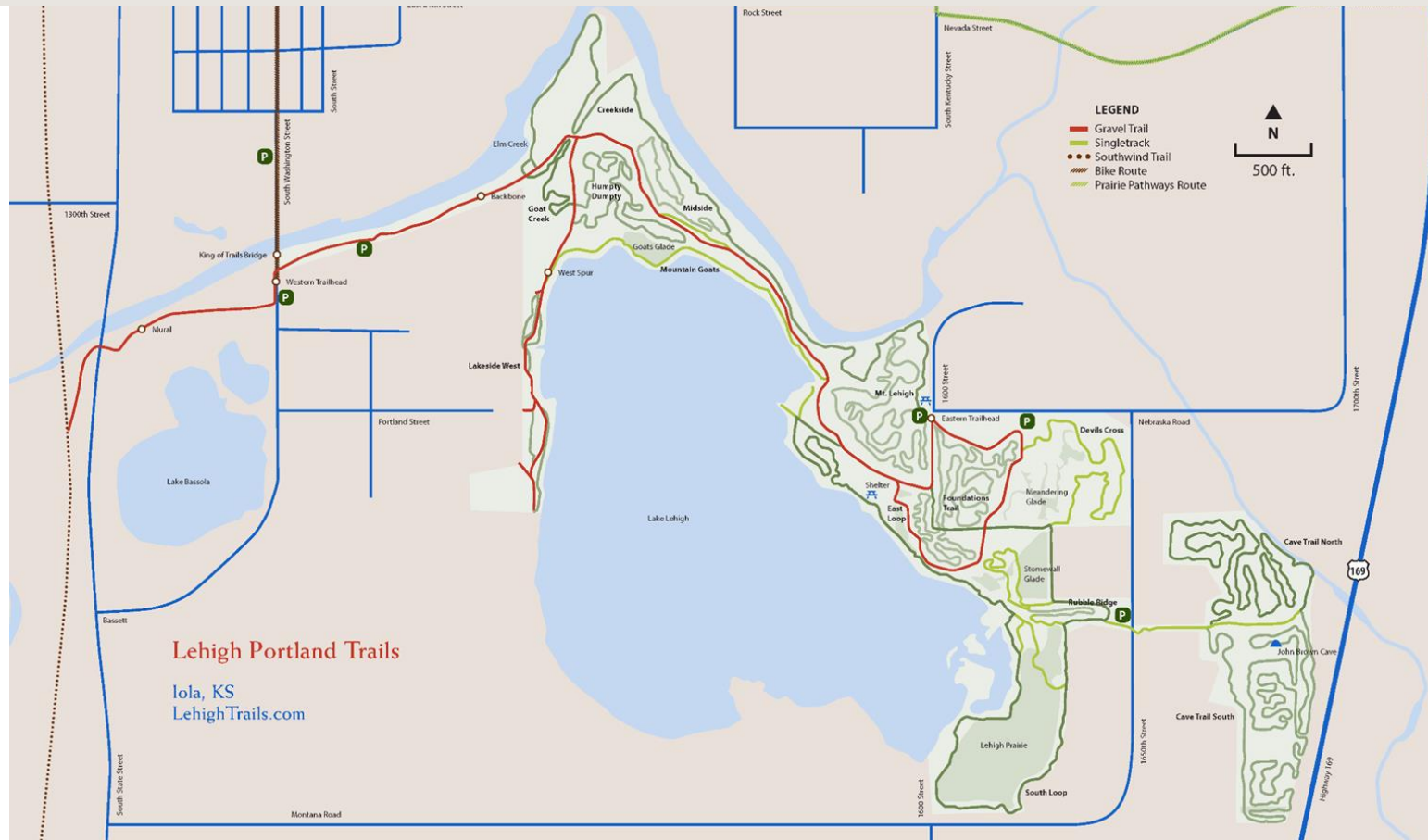


Wet Trails Solutions

- Grade reversals
- Deberming
- Knicks
- Turnpiking
- Armoring
- Structures
- Rerouting
- Prevention - Don't use a wet trail

60+ MILES OF TRAILS & ROUTES

There are plenty of opportunities for a wide range of skill levels and abilities.



**What Trails have needs that
could fit your skills?**

**What interests do you have
that could benefit the trails?**

TRAILS.

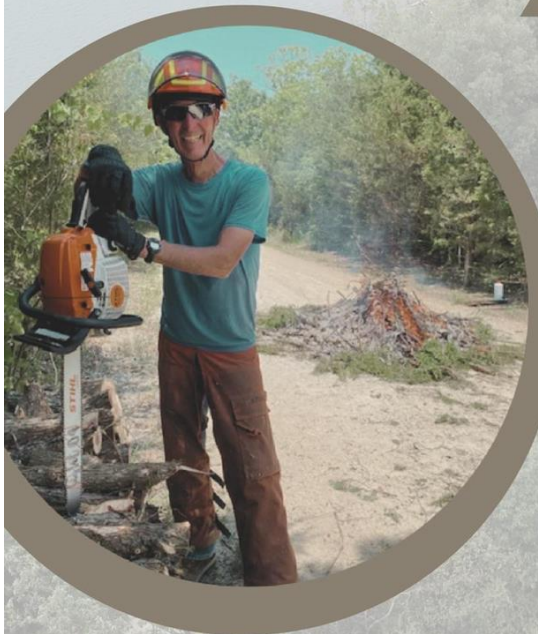


VOLUNTEER ORIENTATION

Join us at the **Thrive office** to learn how you can get involved with Allen County trails!

9 S. JEFFERSON AVE.

SATURDAY, JAN. 27



Do you love the outdoors?
Looking for ways to get involved in making our outdoor spaces better?

- Learn about the trails, safety tips, maintenance needs, and more!
- Snacks and warm beverages will be provided!

9 AM - NOON

620-365-8128 info@thriveallencounty.org

@LehighTrails

NEED MORE INFORMATION?

THRIVE  **ALLEN COUNTY**



VOLUNTEER WORK DAYS



SCAN ME

9AM-3PM on these dates*:
*Come and go as you please

DEC 16
JAN 13
FEB 17
MAR 23
APR 20
MAY 25

Meet @ the East Trailhead
(Intersection Nebraska RD & 1600th ST, Iola, KS 66749)

What to Know:

Specific work locations vary, contact us if you aren't sure of where to meet. Please bring water, wear weather appropriate clothing (hat, sunscreen, bug spray, coat, ect) and wear close-toed shoes and long pants. Do not wear synthetic materials. We will provide tools and gloves, but please feel free to bring your own.

Contact:

John Leahy

+1 (608) 792-5491
johnl@thriveallencounty.org
or



@Lehigh Portland Trails



@lehightrails

LEHIGH PORTLAND STATE PARK





Mike Goodwin
Kansas Trails Council

Organizational Sustainability

Why does organization matter?

- It's easy to get excited about a new trail project, but will that commitment last?
- Safety in numbers – an organization should last longer than an individual.
- Maintaining the trail requires continuing support.
- People come and go, interests change.
- Funding is often only available to non-profits.

Organizational Sustainability

What are the benefits of setting up a new non-profit trail organization?


- Funding opportunities are more available
- People come and go, but a non-profit exists into perpetuity
- A non-profit adds legitimacy to the group
- Tax-deductible donations
- Building an endowment from donations, bequests...

Organizational Sustainability

What are the challenges of setting up a new non-profit trail organization?

- You're now operating a business....a non-profit corporation
- Initial costs to create a non-profit – legal fees
 - Articles of incorporation
 - Governing bylaws
- Legal application for 501c3 – approval may take time – IRS 1023 form
- Ongoing reporting
 - IRS 990, 990 EZ or E-postcard (Under \$50k Income)
 - KS Secretary of State Annual Report
- Accounting and accountability to members
- Board of Directors – Policies re: meetings, elections, dues, donations

Organizational Sustainability

 An official website of the United States Government




Help

News

English ▼

 Charities & Nonprofits

 Tax Pros

File

Pay

Refunds

Credits & Deductions

Forms & Instructions

Search



[Home](#) / [File](#) / [Charities and Nonprofits](#) / How to apply for 501(c)(3) status

How to apply for 501(c)(3) status

Individuals

Businesses and Self-Employed

Charities and Nonprofits

Exempt Organization Types

Lifecycle of an Exempt Organization

Annual Filing and Forms

Charitable Contributions

Search for Charities

To apply for recognition by the IRS of exempt status under IRC Section 501(c)(3), you must use either Form 1023 or Form 1023-EZ.

All organizations seeking exemption under IRC Section 501(c)(3) can use Form 1023, but certain small organizations can apply using the shorter Form 1023-EZ. Go to the [Eligibility Worksheet](#) to see if you qualify to file Form 1023-EZ.

You must complete and submit the appropriate application, along with the required user fee, through [Pay.gov](#). You can find the appropriate application by searching for “Form 1023” or “Form 1023-EZ” on Pay.gov.

Additional information

Frequently asked questions about [applying for exemption](#) are available. You may also want to [view some of our tools](#) designed to help you apply for exemption.

Organizational Sustainability

Are there other options other than setting up a non-profit?

- Affiliate with an existing 501c3?
- Partner with an existing community foundation
- Partner with local governmental unit – City, County, State, Water District, Parks
- Find a willing fiscal agent

Did you enjoy our trail?

Do you want to make a difference? Donations can be made to the Benton Two Angels Trail Fund by scanning this QR code. All funds received are secure and will be used solely for trail repairs, ongoing maintenance and betterment of the trail.

Your kindness can help keep our community's trail beautiful for everyone!

*The Benton Two Angels Trail Fund is a component fund of Central Kansas Community Foundation, a 501(c)(3) not-for-profit entity.
Checks may be mailed to: 400 S Main St, Suite 100, Newton, KS 67114*



Organizational Sustainability

[Home](#)[About](#)[How It Works](#)[Guidelines](#)[Benefactors](#)[Printable Form](#)[Leaderboard](#)

\$353,621.57
1369 gifts to 54 nonprofits

Thank you for supporting our local nonprofits!

Wamego Match Day Participants:

[3Rivers, Inc.](#)[Be Able Wamego](#)[Boys & Girls Club of Manhattan - Wamego Site](#)[Community Care Ministries \(CCM\)](#)[Flint Hills Messiah Chorus](#)[Friends of the Park](#)[Habitat for Humanity - Wamego](#)[Kansas Honor Flight - Wamego High School](#)[Kaw Valley Chamber of Commerce Fund](#)[Kiwanis Club of Pott. Co. - Wamego](#)[Manhattan Area Technical College - Wamego](#)[Native Stone Scenic Drive](#)[Ag in the Classroom](#)[Be F1rst - First Generation Education](#)[Caring Neighbors Cancer](#)[Crisis Center, Inc.](#)[Flint Hills Regional Council](#)[Friends of Zeandale Community WCF](#)[Job Olympics](#)[Katie's Way Charities](#)[Kids Connection of Wamego](#)[Konza United Way](#)[Mount Mitchell Prairie Guards](#)[New Central Flint Hills and Pottawatomie County](#)

Share this site



Prizes & Drawings

Organization/Prize	Amount
WAYGolf (Wamego Area Youth Golf Foundation) Hourly Drawing	\$50.00
USD 320 Foundation Hourly Drawing	\$50.00
Wamego Community Garden Hourly Drawing	\$50.00
Be F1rst - First Generation Education	\$50.00

Organizational Sustainability

Lots of options with many pros and cons

Consult an attorney

Contact a similar organization

- learn from their experience
- copy their application and governing documents
- customize to your situation



Chris Tilden

Friends of Lawrence Area Trails (FLAT)



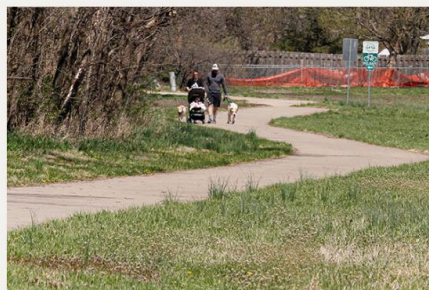
Friends of Lawrence Area Trails (FLAT)

- 501(c)(3) incorporated in 2018
- Created by a subcommittee of LiveWell Douglas County
- All-volunteer board



Friends of Lawrence Area Trails (FLAT)

- Build a community of trail users
- Advocate for trail development
- Raise funds to support projects



About Us

Friends of Lawrence Area Trails is devoted to developing, promoting and maintaining a robust, accessible trails system serving the diverse people and communities of Douglas County and Northeast Kansas.

[LEARN MORE](#)



Lawrence Loop All Routes

Here is the latest Lawrence Loop map. The map shows all segments with descriptions of the route, length, parking and restroom information.

[SEE THE MAP](#)

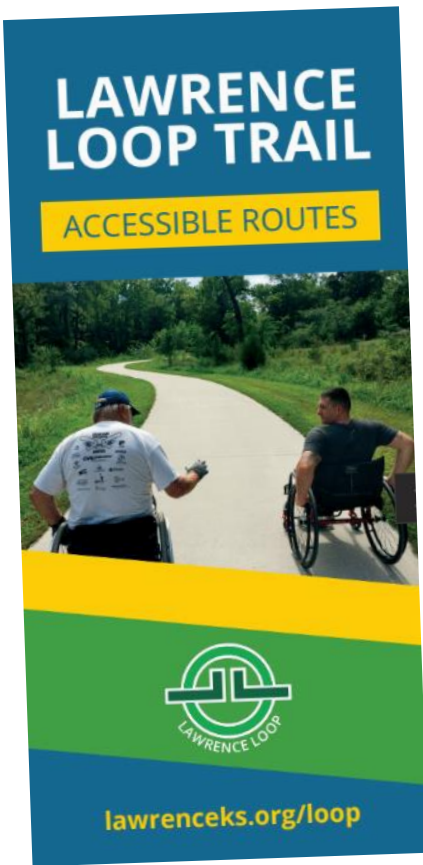


Upcoming Events

[TRAILS THAT CONNECT US '24](#)

April 25 @ 8:00 am - 5:00 pm

[VIEW ALL EVENTS](#)





JOIN US!

- Follow FLAT on Facebook/Instagram or sign up for newsletter at flatks.org
- Donate: <https://flatks.org/donate/>
- Support area trails!





Brian Peterson

Park Management & Conservation

Tech Tools for Trails



Brian Peterson
Kansas State University
Park Management and Conservation

Examples of Tech Tools

- Infrared Trail Counters
- Human Behavior Cameras
- GPS Data Loggers
- Geographic Information Systems (GIS)
- Surveys



Importance of Understanding Travel Patterns

- Information about user travel patterns is some of the most important information for understanding planning, infrastructure needs, and signage.



Infrared Trail Counters

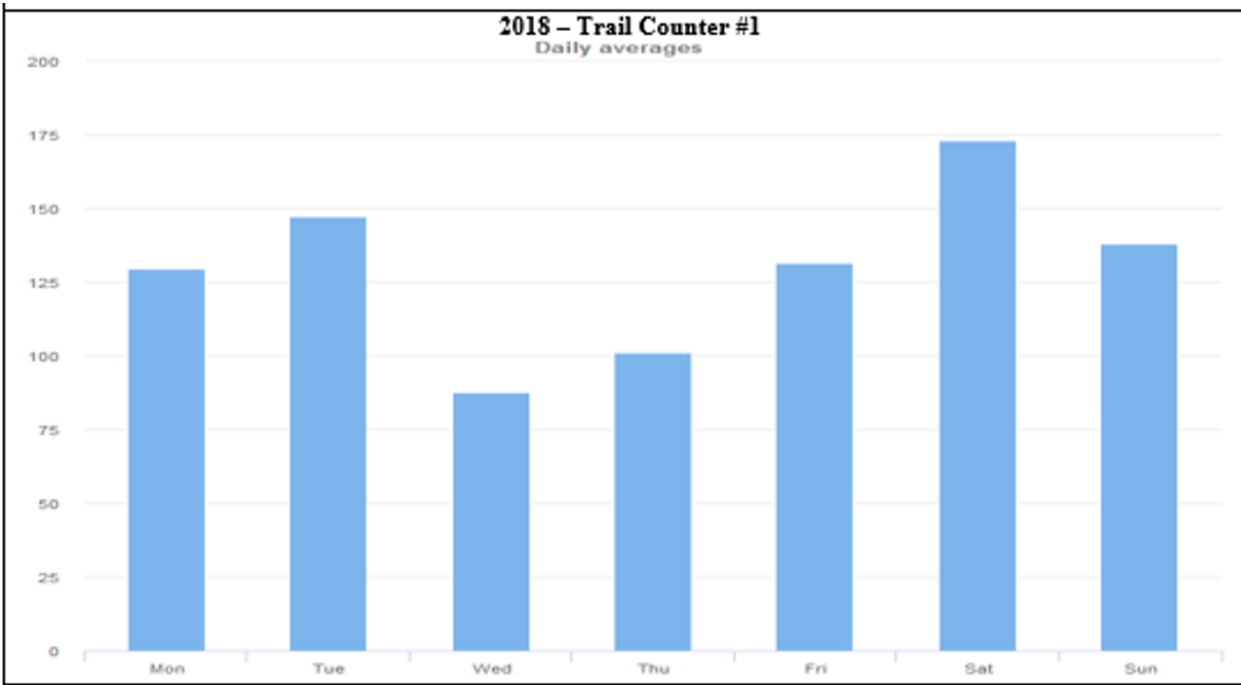


- Useful for collecting count data
- www.trafx.net
- They cost about \$600

Infrared Trail Counters - Data

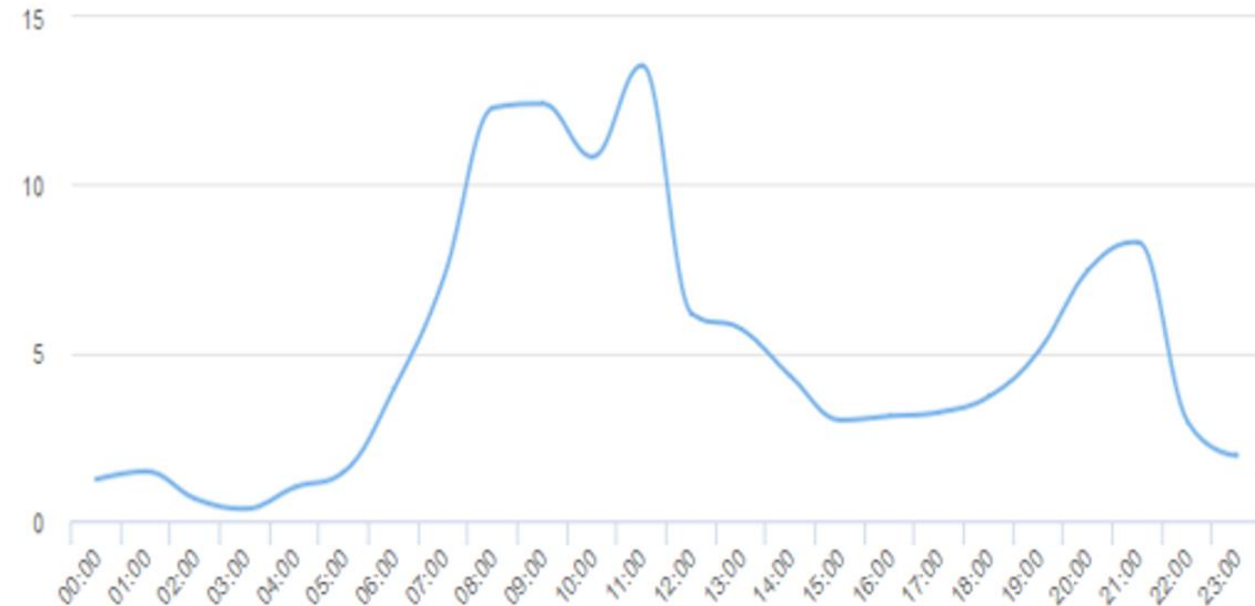


2018 - Trail Counter #1
Daily averages



Daily Average Counts

Hourly Average Counts



Human Behavior Cameras

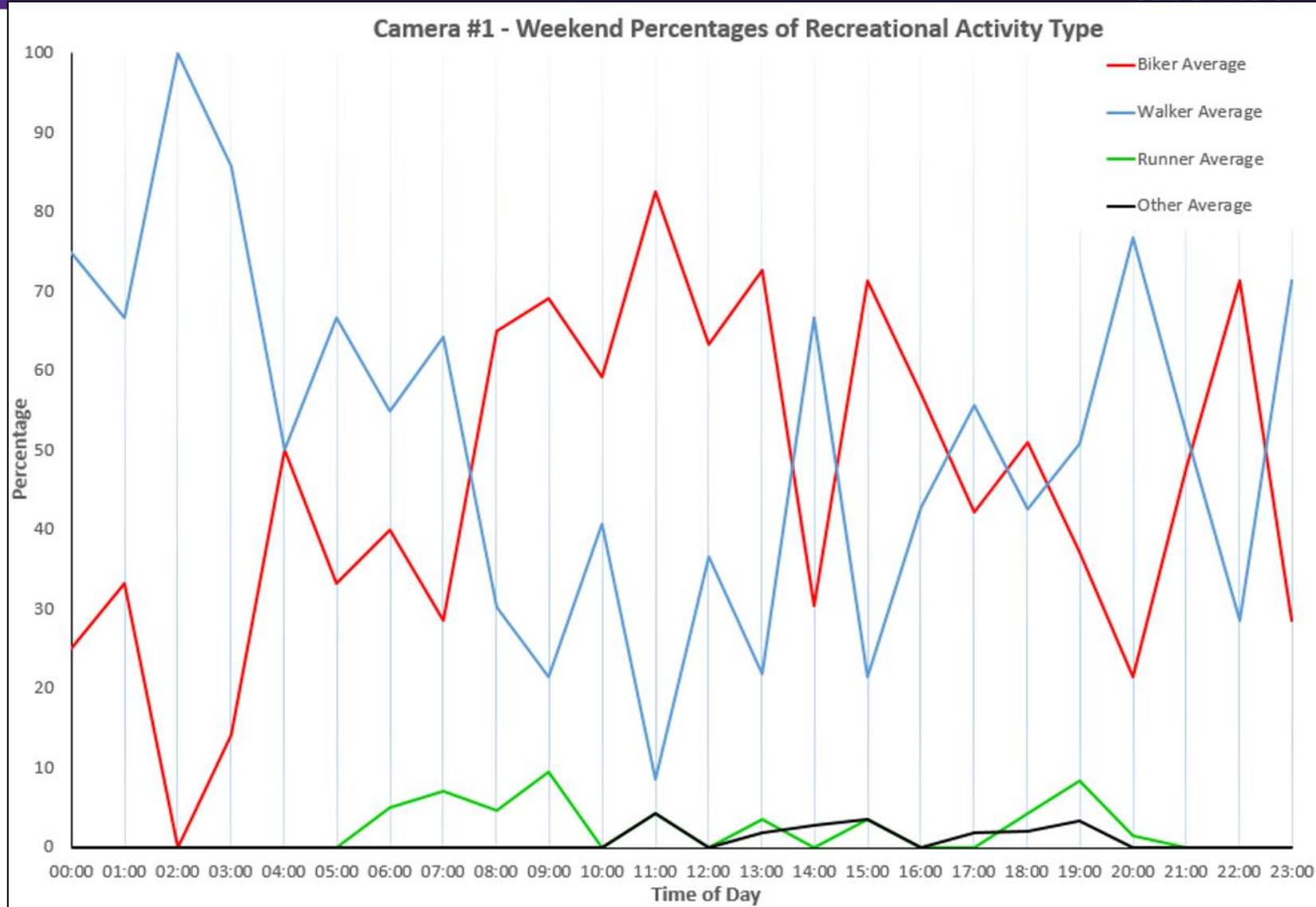


- Useful for understanding counts of activity types
- www.moultriefeeders.com
- Cost about \$80 - \$180

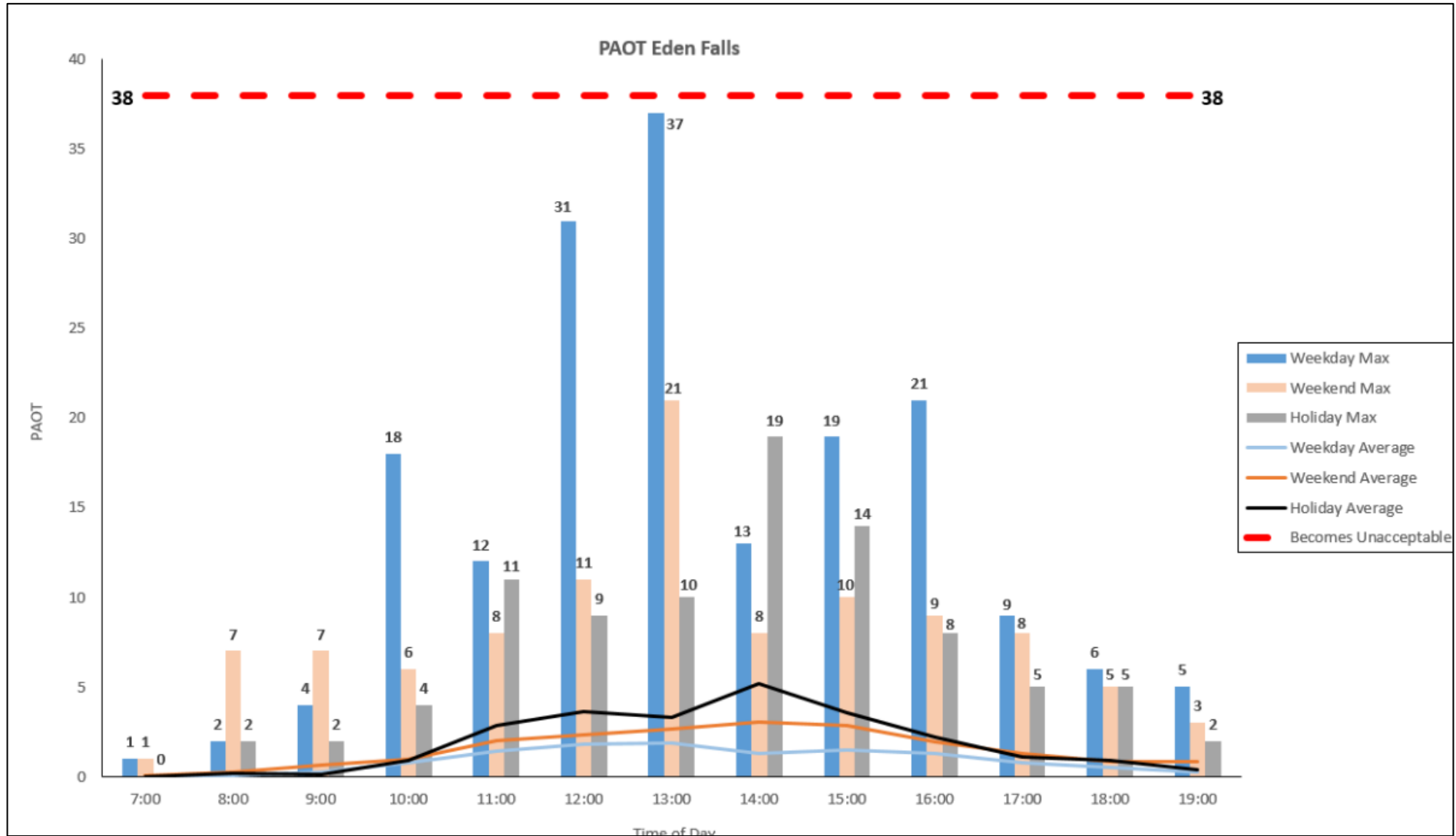
Human Behavior Cameras - Data



Human Behavior Cameras - Data

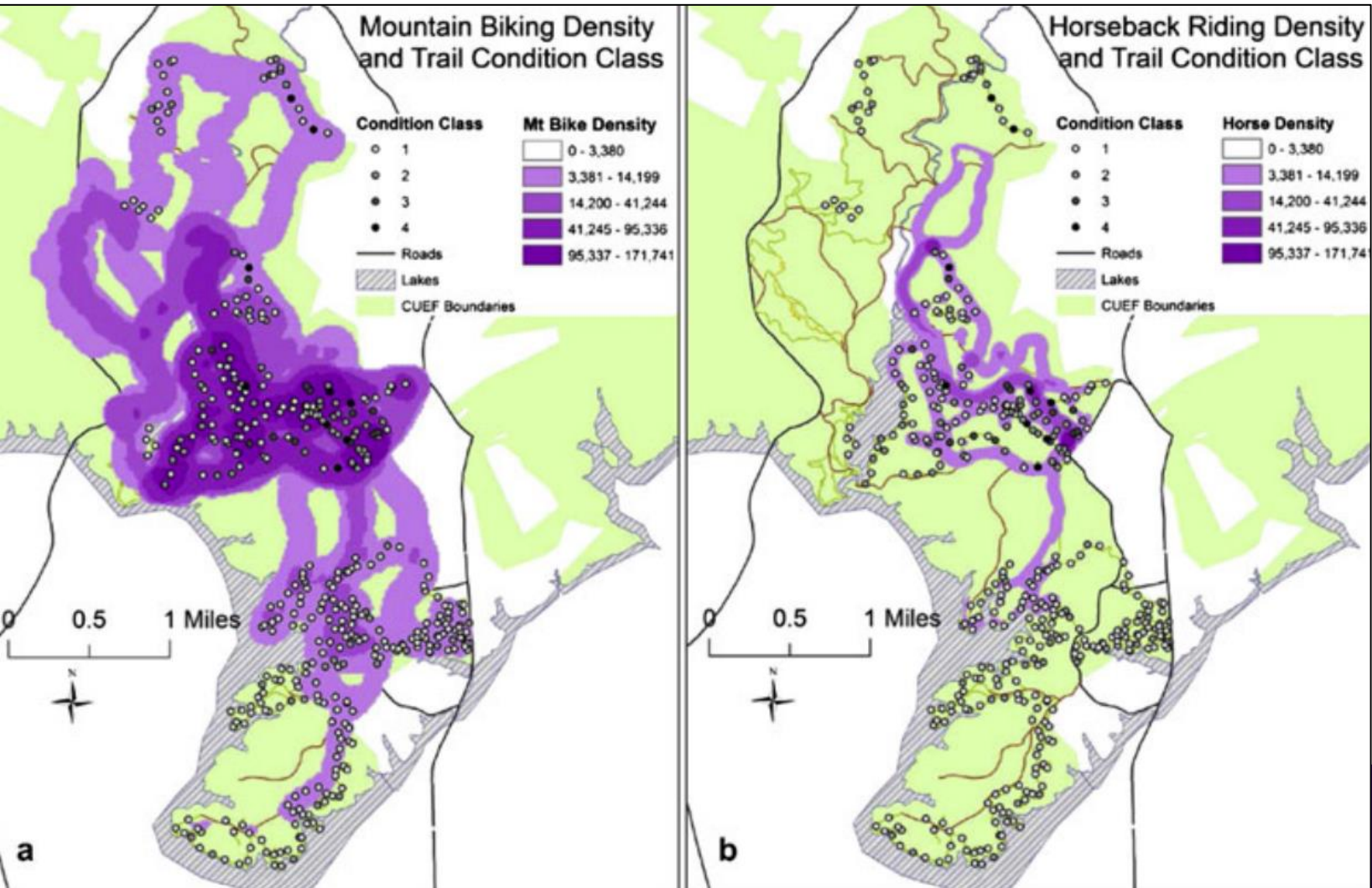


Human Behavior Cameras - Data



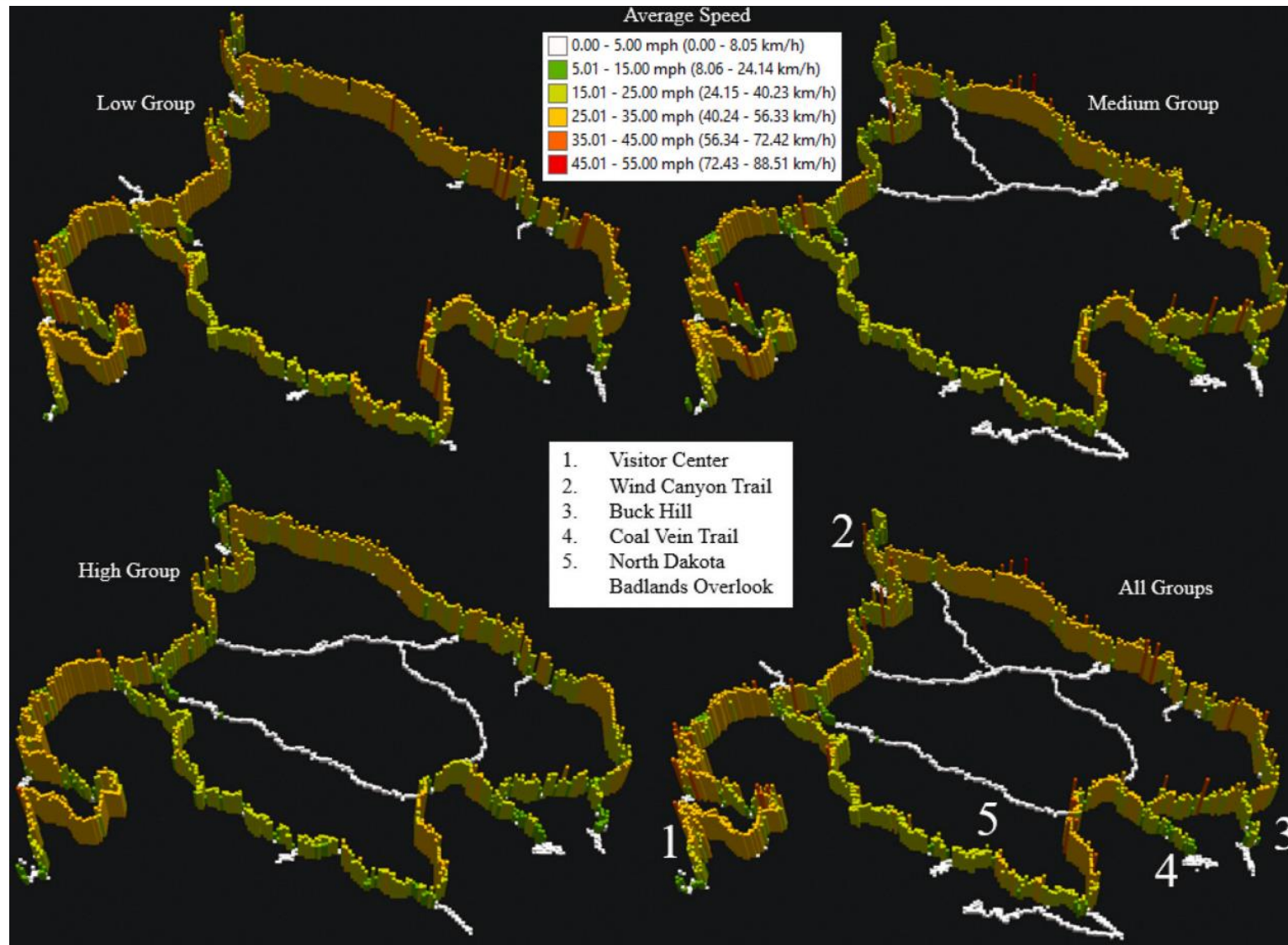
GPS Data Loggers

- Useful for understanding exact locations that people go to, when they go there, how long they spend there, and travel speed.



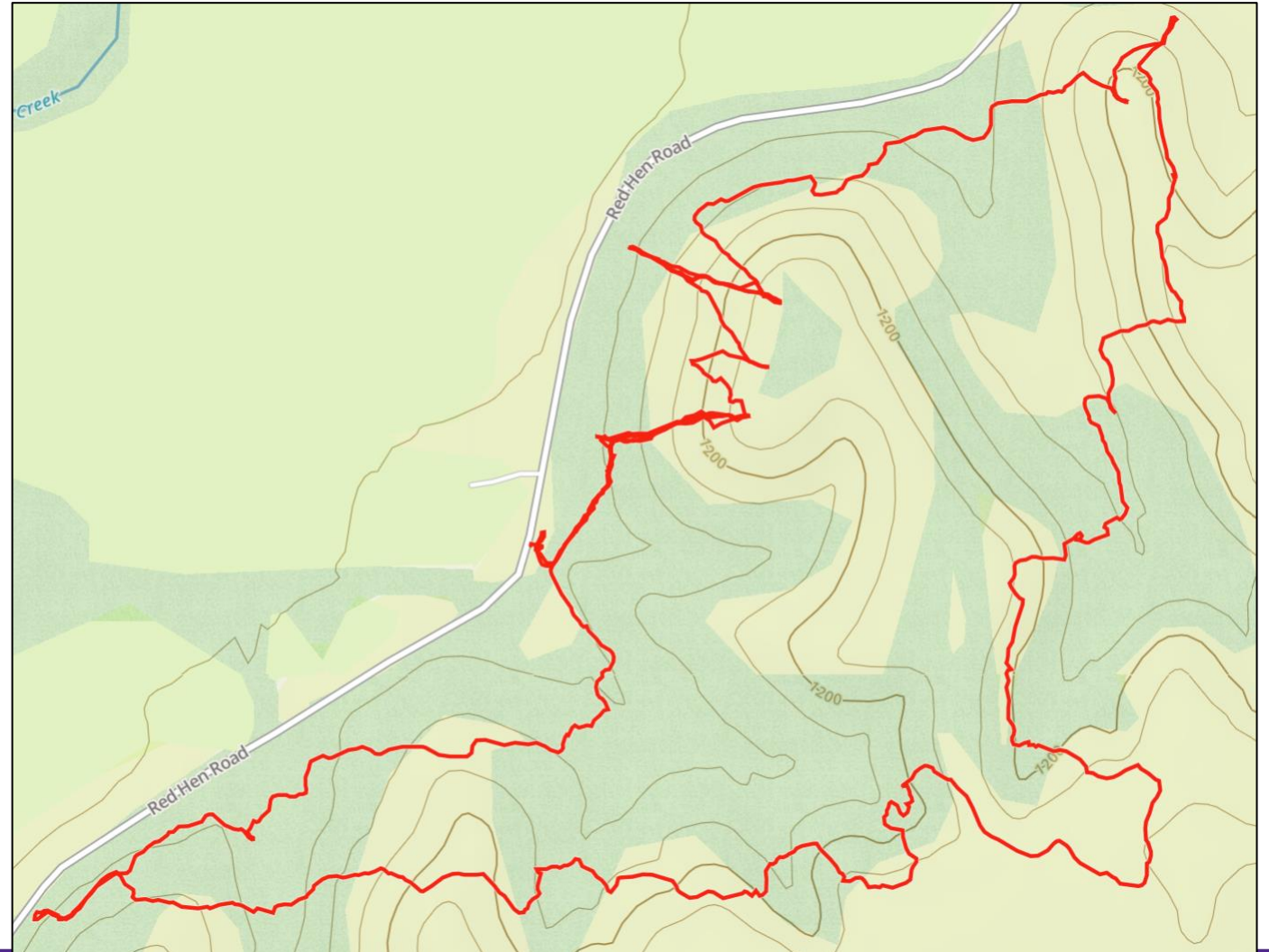
- Canmore GT-730FL
- Cost about \$60 each

GPS Data Loggers



Geographic Information Systems (GIS)

- Intuitive GIS software
 - GAIA GPS
- Map trails and routes using the GAIA GPS app on the phone and then upload it to a computer
- Google Earth is another intuitive option



Surveys

- Trail users that experience good conditions are more likely to act as trail stewards
- Thus, you want people to have quality trail experiences
- Information about people's experiences can be determined by surveys
- Or...they can carry a GPS data logger for you and take a survey when they are done using the trail. That way you can see where they went and what they thought about their experience.
- There are lots of combinations of tools that could be used!
- Trails should be designed for people to have quality experiences because this will help the trail last longer

Thank you!

Brian Peterson
Kansas State University
Park Management and Conservation
brianpeterson@ksu.edu

