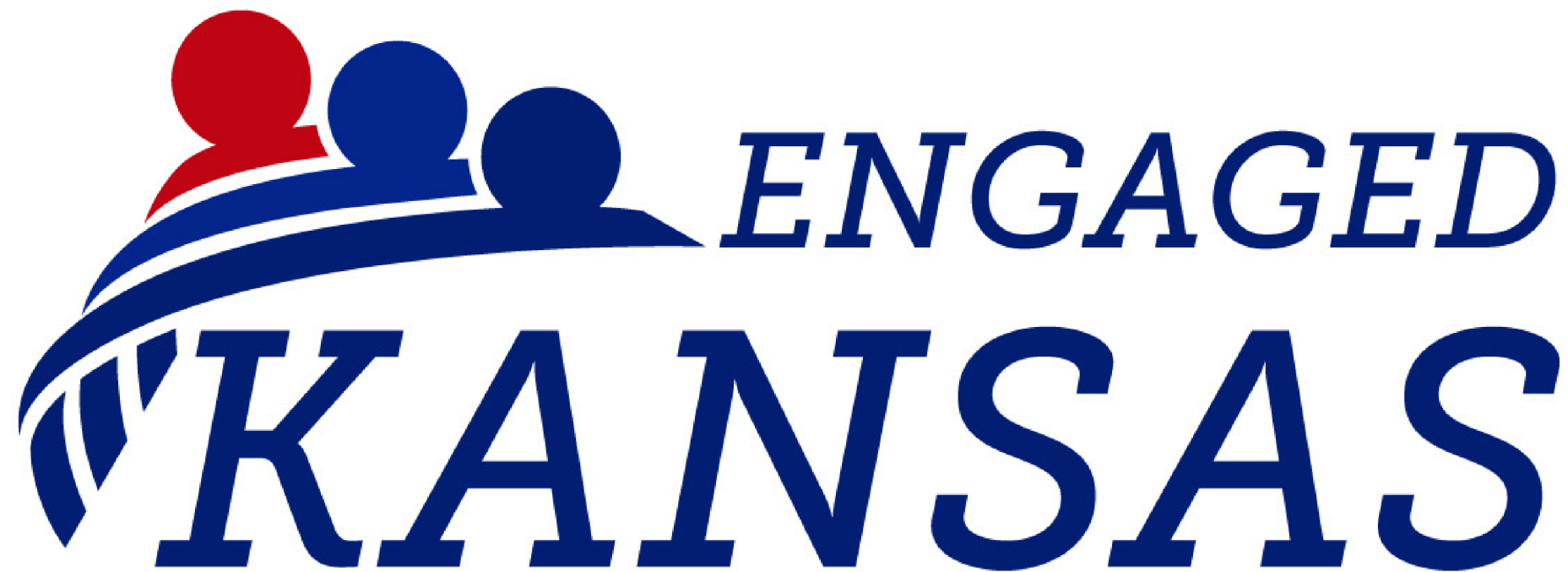


KS Community Builders
Engaged Kansas

What is Engaged Kansas?



Engaged Kansas encourages and supports people to consider public service

 **KANSAS FARM BUREAU**[®]
The Voice of Agriculture[®]

KASB

 **THE LEAGUE**
OF KANSAS MUNICIPALITIES



KANSAS
ASSOCIATION OF
COUNTIES

 **KARL**

 **KANSAS MEDICAL SOCIETY**
Established 1890

 **KANSAS ASSOCIATION OF REALTORS**[®]

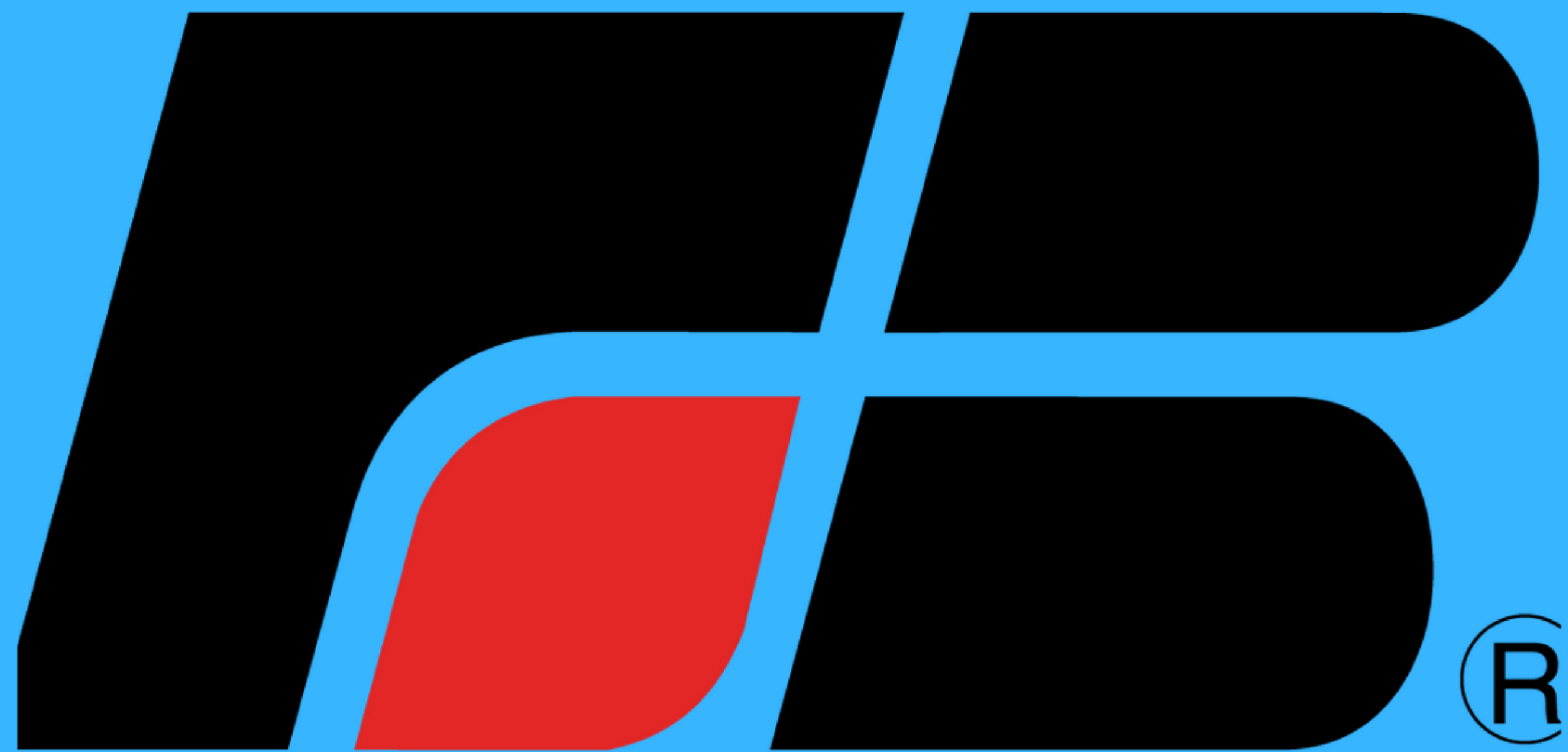
 **KANSAS CHAMBER**
UNITED FOR BUSINESS

Chamber of Commerce Executives of Kansas

 **KANSAS LEADERSHIP CENTER**

UNITED WE |  **appointments project**[™]

 **KANSAS BANKERS ASSOCIATION**



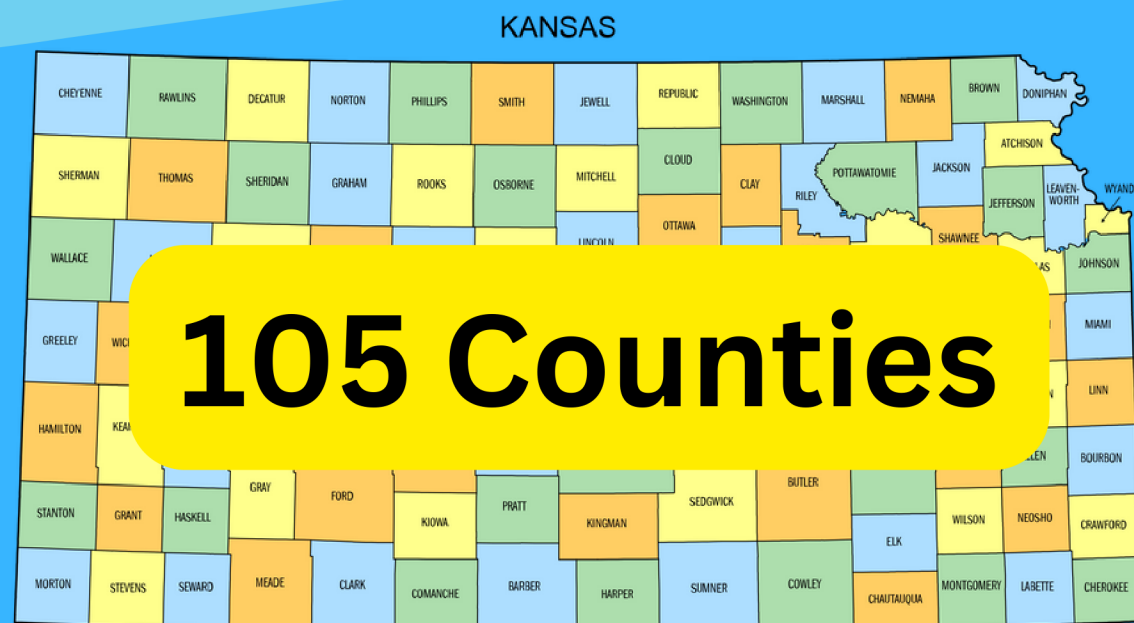
**Our mission is to strengthen agriculture
and the lives of Kansans through
advocacy, education, and service.**

6,000+

locally elected positions

286 School Districts

625 Municipalities



105 Counties

CITY HALL

WANNA RUN FOR OFFICE?

I DONT KNOW WHAT

THEY DO

I DONT KNOW HOW TO

CAMPAIGN



Our Mission

Engaged Kansas *encourages* and *supports* people to consider public service

Engaged Kansas is here to demystify public service and make it more accessible for anyone interested in shaping their communities. We know change and progress comes from individuals who act from the ground up.

Local leaders are important.

Learn more about the people who make a difference in your community and find out more about what they do every day.



SCHOOL BOARD

The Kansas Association of School Board's website provides an overview of what a school board member's role is along with a list of things to consider when thinking about running for school board.

[DISCOVER MORE ABOUT SCHOOL BOARDS](#)



COUNTY COMMISSION

The Kansas Association of Counties provides an overview of the roles and responsibilities of being a County Commissioner.

[DISCOVER MORE ABOUT BEING A COUNTY COMMISSIONER](#)



CITY COUNCIL/COMMISSION

This guide from the League of Kansas Municipalities includes tips, definitions and things to consider when running for elected office in city government.

[DISCOVER MORE ABOUT CITY COUNCIL AND COMMISSION](#)

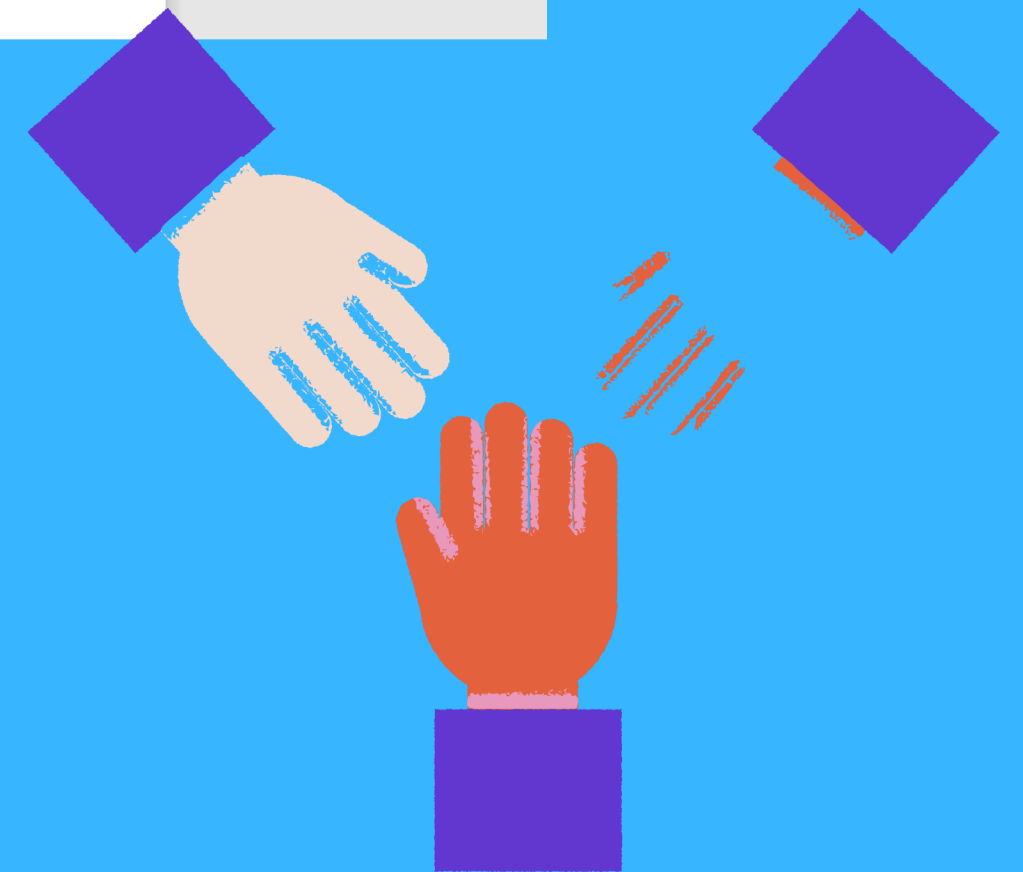
Roles and Responsibilities of being a KANSAS COUNTY COMMISSIONER



County governments were originally created as administrative divisions of the states. Each state government in the country has designed, through its constitution and statutes, the authorities and powers that counties may exercise. The authority for counties to conduct business in Kansas is granted by the state through state statutes called statutory home rule that was enacted in 1974.

Personal traits that can benefit county commissioners include a sense of humor, an open mind, a vision of how county government should operate, an ability to compromise, and an ability to delegate. Effective communication and negotiation skills are important as well.

Commissioners' terms are four years and are





**20% of 19,000
Bridges in Kansas
Rated
POOR**

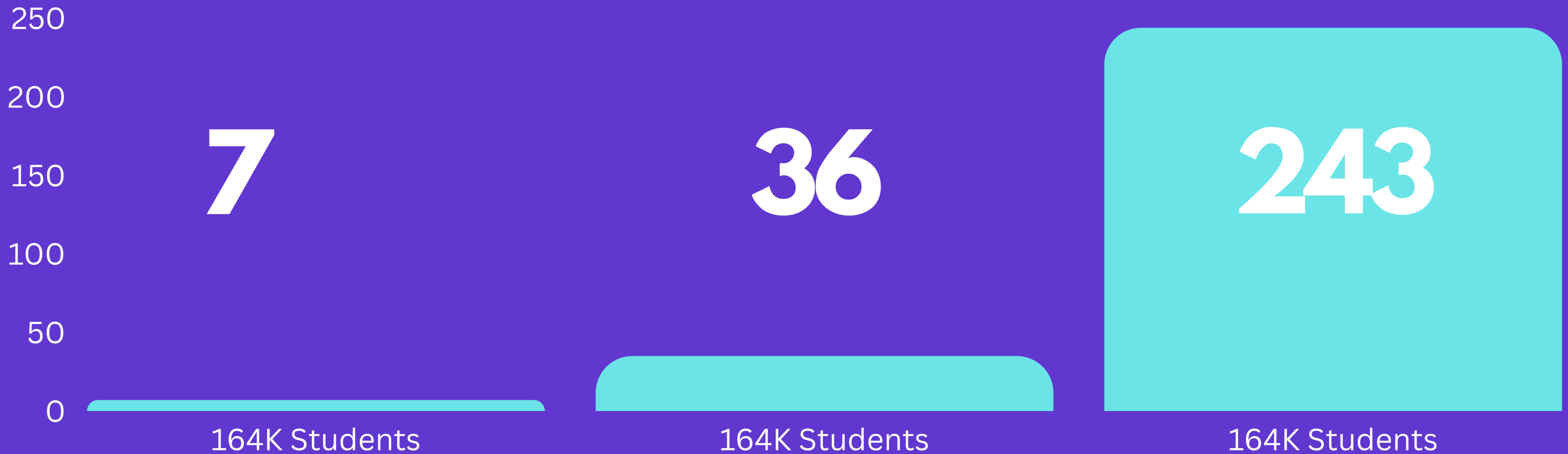
Data from 2020 Office of Rural Prosperity
Annual Report



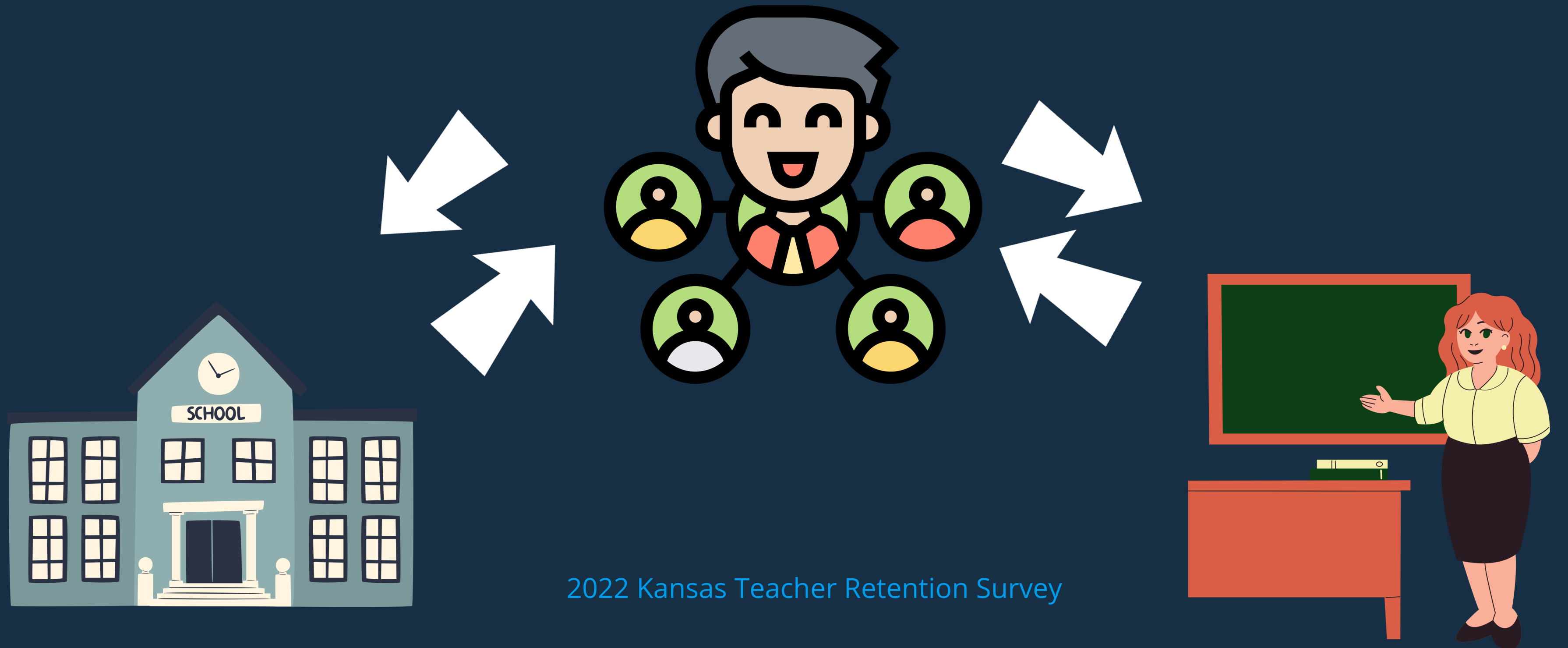
492,000 K-12

Students in Kansas

■ 286 School Districts



Vision and leadership of the Board of Education Drives Teacher Retention



2022 Kansas Teacher Retention Survey

625 Kansas Cities

503 = 11%

Kansas Population

Off Farm Income

 **+50%**

of Total Farm

Household Income

USDA ERS - Family Farm Households Reap Benefits in Working
Off the Farm



KANSAS FARM BUREAU'S CAMPAIGN SCHOOL

Campaign School provides anyone interested in running for state legislature, school board, county commission or other public office the skills needed to campaign and execute a winning campaign.

[DISCOVER MORE ABOUT
CAMPAIGN SCHOOL](#)



KANSAS LEADERSHIP CENTER'S (KLC) YOUR LEADERSHIP EDGE

Your Leadership Edge is KLC's two-day foundational training program that will help you discover new ways to communicate, solve problems and lead.

[DISCOVER MORE ABOUT KANSAS
LEADERSHIP CENTER](#)



LEADERSHIP KANSAS & KANSAS EMERGING LEADERS

Leadership Kansas selects a group of leaders as diverse as the state annually and provides them with professional development, informational training and networking opportunities.

Kansas Emerging Leaders provides young leaders just starting on their professional paths the opportunity to learn about the state's challenges and opportunities.

[DISCOVER MORE ABOUT
LEADERSHIP KANSAS & KANSAS
EMERGING LEADERS](#)

CAMPAIGN SCHOOL



2024 Dates and Locations

Complete Campaign School – In-Depth Curriculum, Media Training and Simulation

April 17-18

Wichita - Wichita Regional Chamber

Mini Sessions – Summary of Basic Campaign Theory and Practice

January 16, 1-5 PM

Topeka - Kansas Chamber Office

February 2, 2-6 PM

Manhattan - Hilton Convention Center

April 10, 1-5 PM

Overland Park - Overland Park Chamber Office

May 15, 1-5 PM

Hays - BriefSpace

May 16, 1-5 PM

McPherson - McPherson Chamber Office

June 11, 1-5 PM

Colby - Pioneer Memorial Library

June 26, 1-5 PM

Iola - Allen County Community College Main Building

**PARTICIPANTS
HAVE AN OVER 80%
NATIONAL WIN
PERCENTAGE**



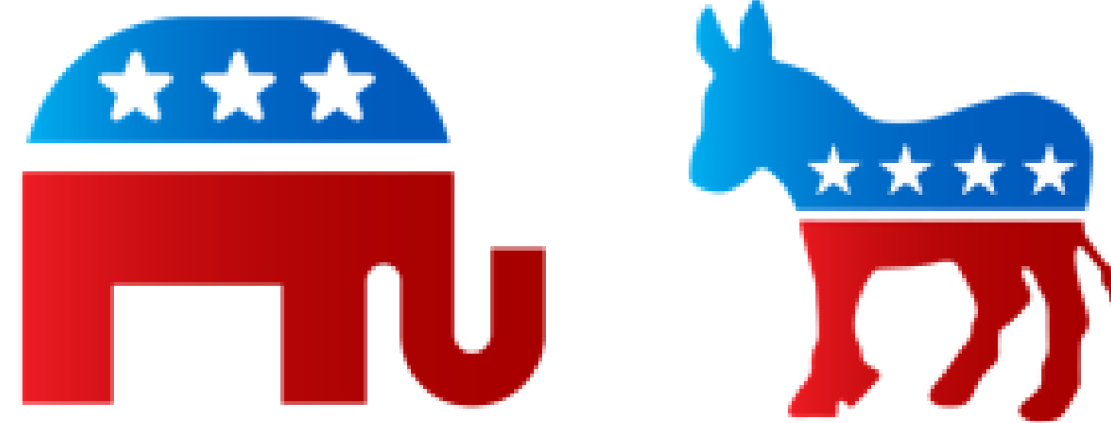
An Engaged Kansas Resource
www.engagedkansas.org



www.kfb.org/CampaignSchool

- Find Detailed Agendas
- Fill out an Interest Form
- Register to Attend

THEORY OF CAMPAIGNING



Political parties alone cannot get you elected!

THEORY OF CAMPAIGNING



**Elections are
more often
lost than they
are won**

Candidates have two responsibilities:

1. Be in the right place at the right time
2. Get message out



THEORY OF CAMPAIGNING

1 in 7 Rule

1 contributor >

7 more people to vote for you

= 8 voters

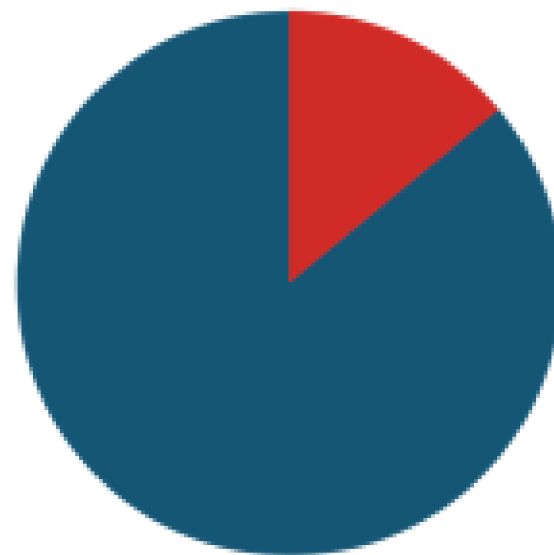


THEORY OF CAMPAIGNING

14/86 Rule

14% of voters are informed

86% are uninformed





Our Mission

Engaged Kansas *encourages* and *supports* people to consider public service

Engaged Kansas is here to demystify public service and make it more accessible for anyone interested in shaping their communities. We know change and progress comes from individuals who act from the ground up.

EngagedKansas.org



@engagedkansas



@Engaged_KS



Thank You!