

SUNFLOWER

Development Group

Impact Kansas CDE: A
Partnership Between NetWork
Kansas and Sunflower
Community Investment



Impact
Kansas
Community
Development
Entity (CDE)

Partnership between NetWork Kansas and
Sunflower Community Investment

Applied for certification as a rural CDE

Will invest 70% in rural Kansas

Application will be announced late July or
early August

Due in September

Impact Kansas' Mission

Impact Kansas' mission is to invest in projects that increase health equity, community vibrancy, and entrepreneurial activities primarily in rural communities. Investments will be targeted toward community facilities, healthcare expansion, broadband access, manufacturing/industrial and operating business expansion. These efforts are vital to improving the health, education, and prosperity of citizens in low income rural and urban communities.

Advisory Board

- **Christy Hopkins**
 - Director of Greeley County Community Dev
- **Casey Woods**
 - Executive Director of Emporia Main Street
- **Steve Weatherford**
 - Acting Executive Director LISC
- **Suzanne McClure**
 - Economic Development Director for the City of Goodland

- **Imagene Harris**
 - Director of Strategic Partnerships and Impact Investing at Network Kansas
- **Luke Mahin**
 - Director of Republic County Economic Development
- **Nick Poels**
 - Executive Director of Phillips County Economic Development

Impact Kansas Partnership

- Network Kansas
 - Broad reach in KS
 - Provides mezzanine debt (gap financing)
 - Makes >80% of loans in rural areas
 - Highly subordinated debt
 - Sells tax credits to help fund loans
 - Created thousands of jobs

Sunflower Community Investment

- Subsidiary of Sunflower Development Group
- Full service real estate developer and consultant
- NMTC Consulting
 - Secured \$90 million in NMTCs over 4 years
 - Experienced in rural deployment
 - Experience in management of CDEs
- Closed over \$250 million in NMTC transactions

Impact Kansas CDE

- Projects between \$5 million - \$100 million
- Timeline: 2020 – 2022
- >70% rural Kansas projects
- Seeking projects
 - Healthcare expansion
 - Broadband
 - Education
 - Community facilities
 - Industrial/manufacturing
 - Grocery stores
 - Community Facilities

NMTC Program

- Community Development Financial Institution (CDFI Fund)
- Awards \$3.5 billion in NMTC allocation annually
- CDEs/CDFI apply annually
- 73 CDEs received awards in 2019
- Average award is \$40 million
 - 11 rural CDEs received allocation with **\$57 million** average award
- Kansas is designated as an “underserved state”

What is the NMTC

- 39% federal tax credit
- Realized over a 7-year period (5% for 3 years, 6% for 4 years)
- Purchased by large institutional investors
- Credit prices range in markets \$.80-\$.82*

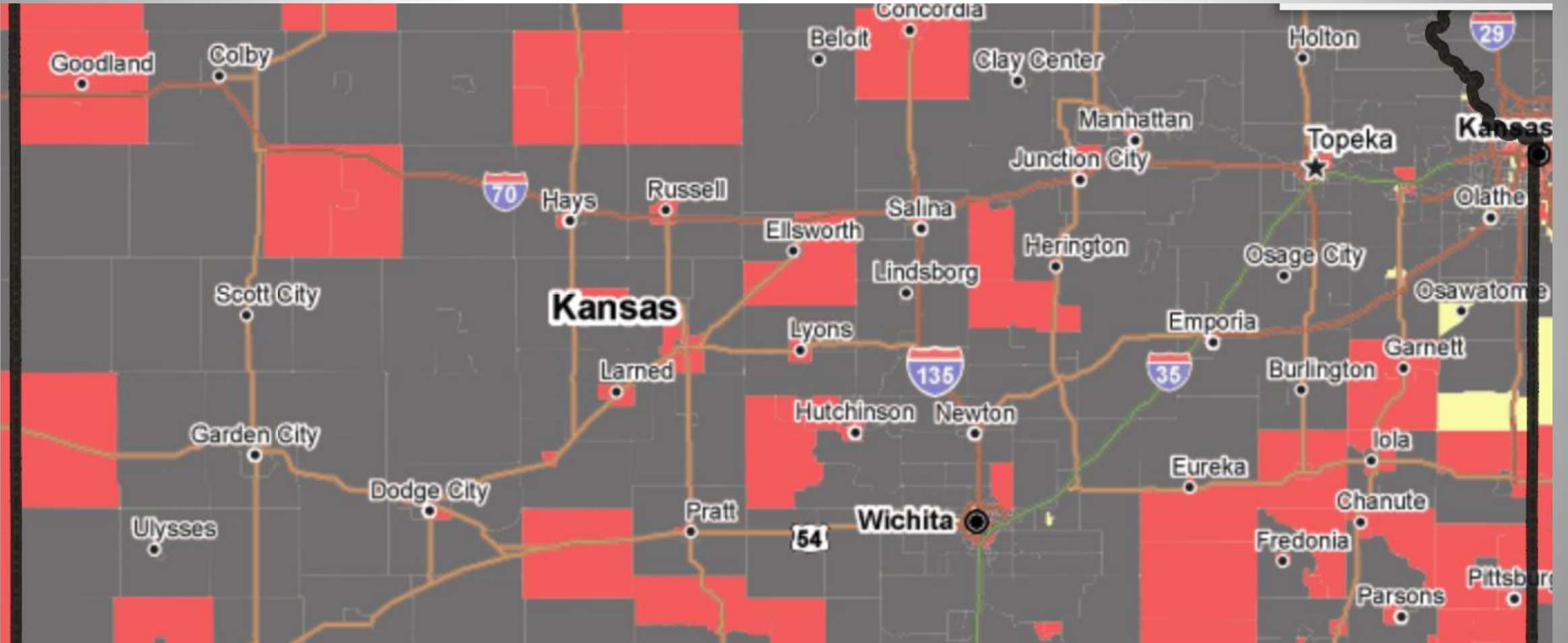
Benefit to Project

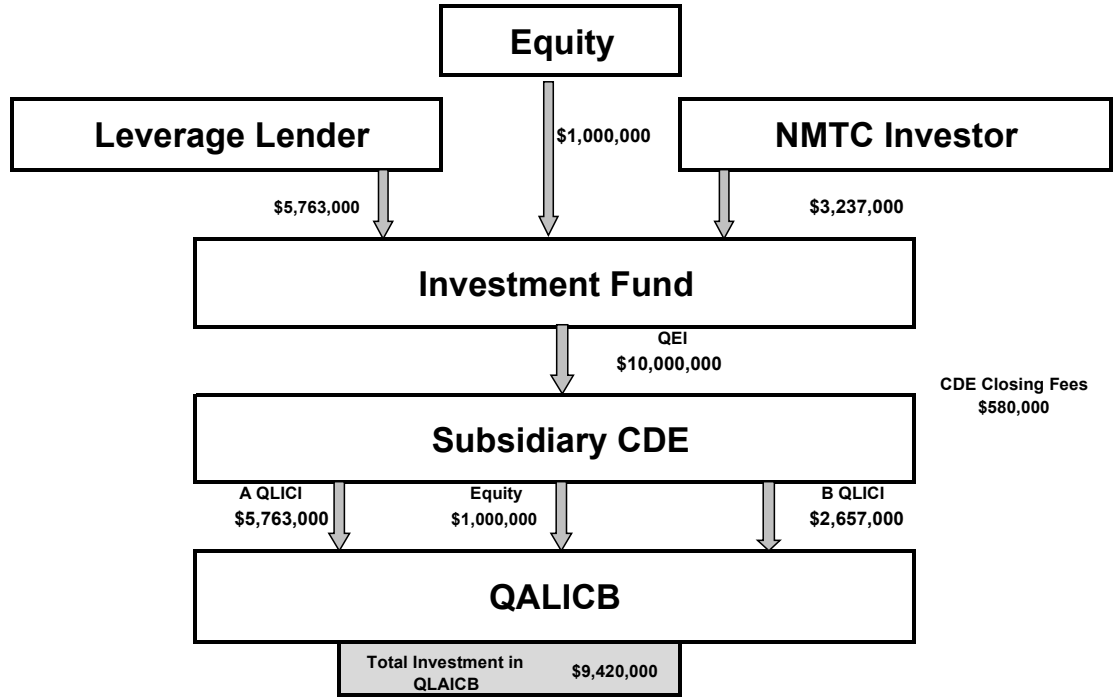
- NMTCs provide between 13%-20% net equity to a project
- NMTC equity is in the form of an interest-only loan for 7 years
- Loan can be converted to equity after compliance period
- Increases amount of borrower equity

Eligible Census Tracts

- Projects must be located in distressed or highly distressed census tracts
 - 20% poverty (30% Poverty for Highly Distressed*)
 - Median family income below 80% AMI (60% for Highly Distressed)
 - 1.5 times national average for unemployment
 - Rural and Distressed
- Typical project minimum size is \$5 million

www.novoco.com





Sources of Leverage Loan

- Conventional Debt*
- Community Development Financial Institutions (CDFIs)
- Owner/Investor Equity
- Bonds (GO, IRBs, etc.)
- Capital Campaigns
- Tax Incremental Financing Bridge
- Grants
- USDA Guaranteed Loans
- Layered Financing

Project impacts

- Creating quality living wage jobs in low-income communities
 - 5-10 jobs per \$1mm of allocation
- Assisting minority, women-owned and low-income community businesses
- Offering flexible or below market lease rates to tenant businesses
- Providing goods and services in low-income areas
- Improving access to healthy and affordable food options
- Improving environmental sustainability
- Pioneering developments that will catalyze additional private investments in the community
- Public/Private partnerships

NMTC Projects



The Merc – Kansas City, Kansas

- Coop- 12,000sqft grocery store
- TPC - \$7 million
- Total allocation secured \$7.0 million
- Capital stack – GO Bonds (TIF/Property tax), cash on hand, LISC HFFI
- Includes demonstration kitchen, classes, public gardens, education coordinator, public meeting space
- Total net benefit = \$1.1 million



Rooks County Health Center

- Phase 1 Nuclear Medical Suite - \$2.6 million
- Phase 2 Outpatient rehab - \$7.2 million (including NMTC fees)
- Total NMTC Allocation - \$8.2 million
 - Gross NMTC Equity - \$2.6 million
- USDA CF Loan - \$7 million
- Capital Campaign - \$1.5 million



Community Centers: Atchison YMCA

- Replacement of 102 year old YMCA with a 16,875FT facility
- Supports 3,000 LIPs access to exercise, gym, pool, teaching kitchen, kids fitness, etc.
- TPC: \$11.4 Million
- \$10,000,000 NMTCs
- \$6,000,000 Capital Campaign



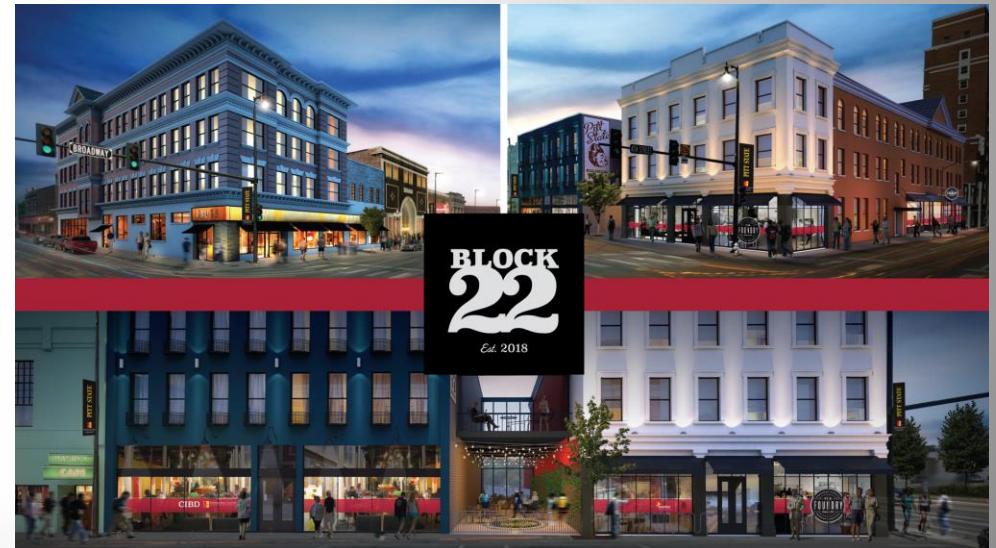
Community Center: Salina Fieldhouse

- 65,000SQFT – Basketball, volleyball, indoor turf, soccer, futsal, etc.
- \$11.7 Million TPC
- \$4.5MM City of Salina
- \$4.5MM Private Fundraising
- \$2.7MM NMTC Equity



Mixed Use/Education: Pittsburg, KS

- 100 units student housing, 4 separate historic buildings, 4th and Broadway
- Ground floor retail, Roots Coffee, Biz Dev Center/Incubator, hacker maker space, community meeting space, health screenings, non-profit programming
- \$18MM TPC
- \$1.5MM Grant Pittsburg State
- \$1.5MM Grant City of Pittsburg
- \$4MM NMTC Equity
- \$6.5MM Historic Tax Credit Equity
- \$4.5MM Loan Enterprise Bank & Trust



Healthcare: Children's Campus KCK

- 72,000FT facility to provide early childhood education and conduct research to benefit LIPs
 - mental health
 - oral health services
 - family support services
- TPC: \$18.3mm
- NMTCs: \$14.1
- Created 192 jobs



WHAT WE NEED FROM YOU!

- Projects to demonstrate need in Kansas
- Projects can be conceptual, predevelopment or imminent
- >\$5 million
- Limited information needed for application phase
- Located in an eligible census tract
- Intake form completed

Intake Form Questions

1. Contact Information of project sponsor
2. Address of project
3. Summary of project
4. Total project cost
5. Sources and uses (if available)
6. # of jobs to be created or retained
7. Type of jobs to be created
8. Average estimated salary and benefits
9. Types of goods or services a business will provide (if applicable)
10. How will the project impact/improve the overall community/area

Contact information

Chris Vukas
Director of Economic Development
Sunflower Community Investment
1125 Grand Blvd, Ste 202
Kansas City, MO 64108
cvukas@sunflowerkc.com
816-581-3996

Steve Radley
President & CEO
NetWork Kansas
P.O. Box 877
Andover, KS 67002
sradley@networkkansas.com
316-425-7572