



Trail Talk Tuesday:  
**Let's Get Started!**

November 14, 2023



# Sunflower Foundation 's Trails!



# What does it take to get to this???



Smoky Hill River Trail (Salina) – October 2023



Osage Cuestas Trail (Fredonia) – Nov 2023

A lot... but luckily, some work you can do in your pajamas!

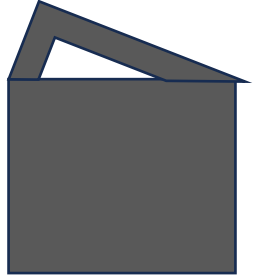
**Determine which entities will take ownership of the trail project – all or parts.**

- \* Local governmental entity (city, county, school, etc.)
- \* Local established nonprofit
- \* Local coalition without formal tax structure (“Friends of”)
- \* Other *(Note: Rail-Trails are special, future webinar)*

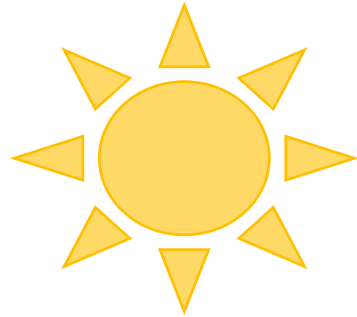
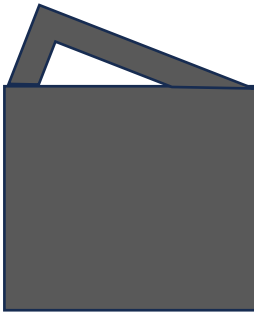
**Need an established entity and process for the following:**

- \* Obtain legal authority to “sign off” on building trail on public land and establish a plan for trail maintenance.
- \* Develop structure to facilitate the acceptance of any funds dedicated toward the trail.

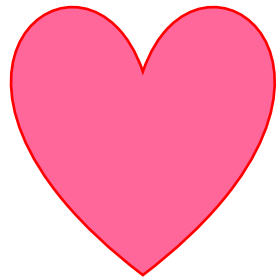
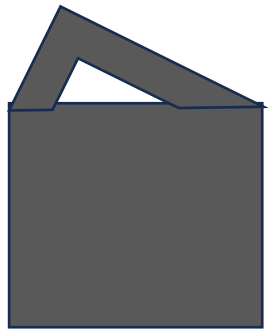
# Most Common “Models” for Organizational Structure of Trail Projects



Local governmental entity (city, county, state, school, etc.)



Local governmental entity partnering with established nonprofit; size of nonprofit’s role in project can vary depending on local politics, personalities, aptitudes and capacities.



Local governmental entity partnering with coalition of supporters with no established nonprofit formation (e.g., “Friends of ABC Trails” group)

# WHO is actually building the trail on public land?

- If trail builders are volunteers or a nonprofit that taking on lead role:
  - Establish MOU (Memorandum of Understanding) between entity building the trail and entity that manages the land.
  - Spell out expectations: “We will do this...” / “You will do this...”
  - Include plan for maintenance.



# WHO is actually receiving the funds and paying for trail? *Part 1: Grants*

---

- Local circumstances will dictate which entity is best to 1) write, and 2) submit grants.
  - Local governments typically best for federal/state grants, though nonprofit assistance can be very helpful for critical support activities.
  - Nonprofits often better-suited to apply for philanthropic funding with less regulations.
  - If you are a “Friends” group writing grant, include Letter of Commitment/MOU with city and information on fiscal agent.

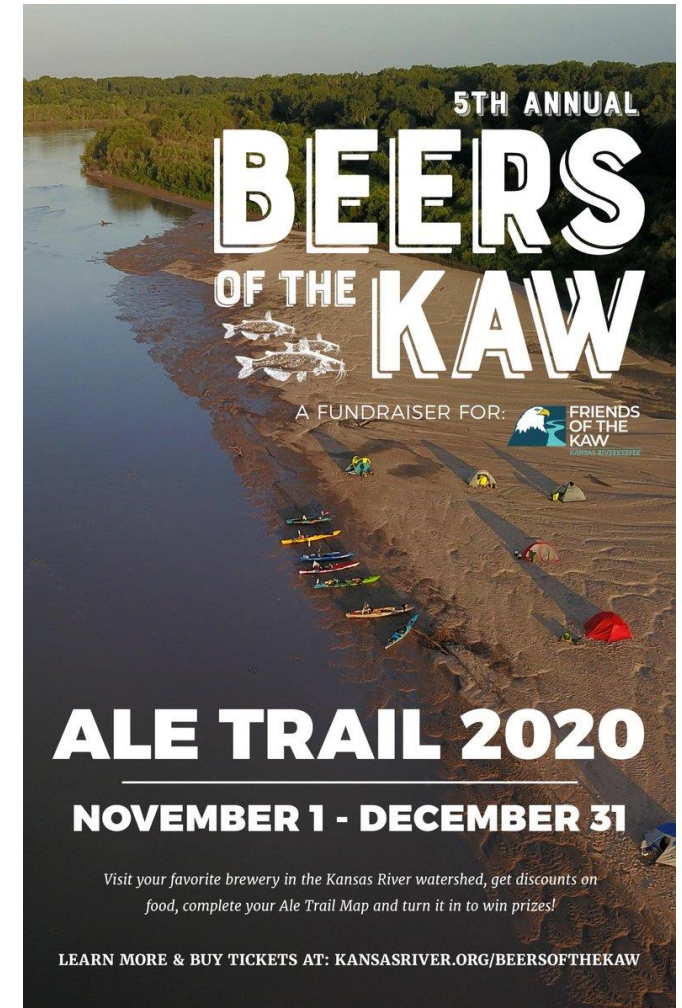


NOTE: It truly takes a village to write a successful grant – all talents needed!

# WHO is actually receiving the funds and paying for trail? *Part 2: Fundraising*

---

- It's a lot easier for nonprofits or "Friends" group to raise money from the public than local government.
- If fundraising group is not 501c3, establish a fund for the trail at local community foundation. Emphasize tax deductions and encourage use of donor-advised funds.



NOTE: Discuss "flow of funds" ahead of time – i.e., what is process to pay vendor(s) to build the trail.



Trails! Trails! Trails!  
Trails! Trails! Trails!

**Thank you...  
Put questions  
in Chat Box!**



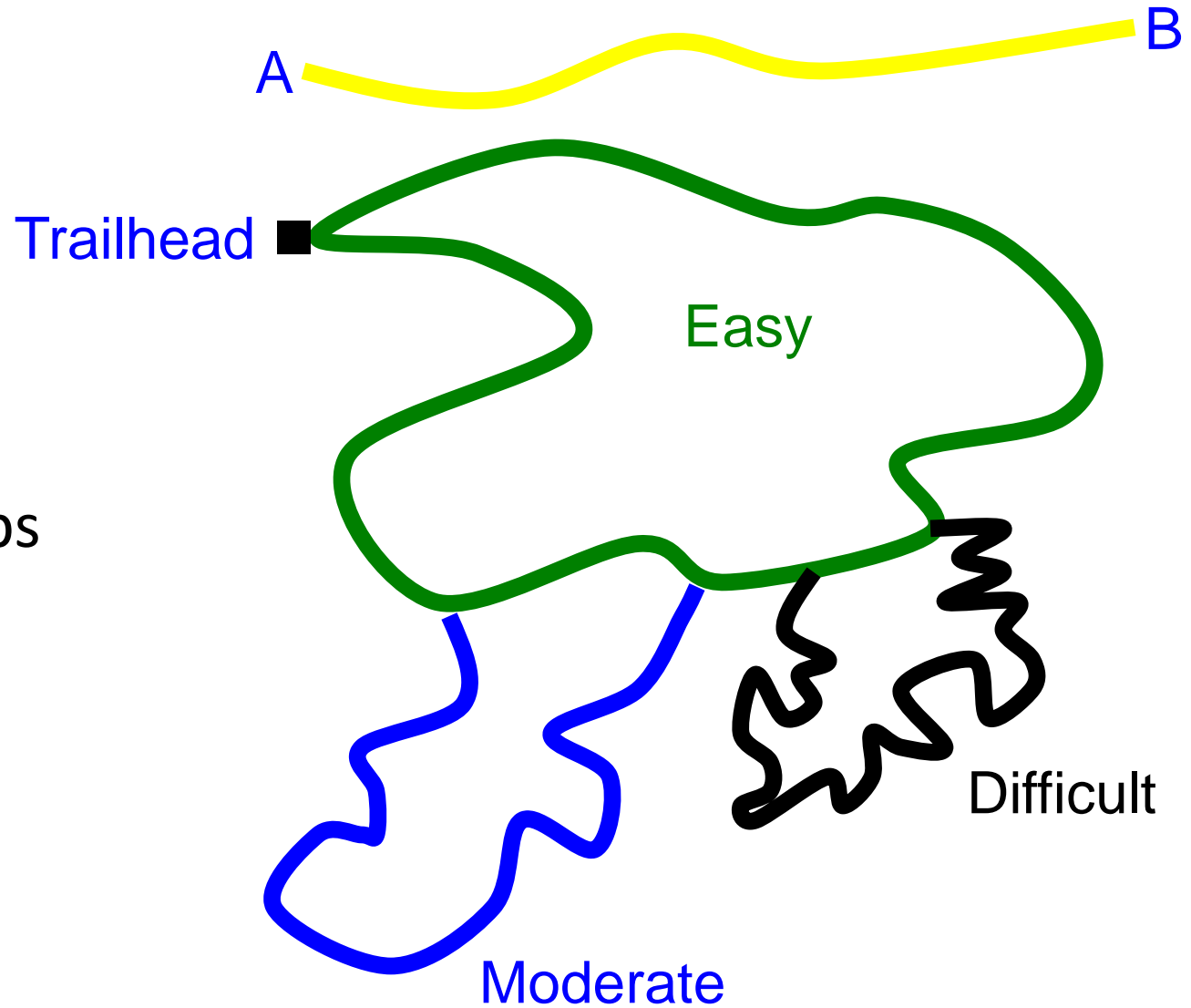
# Trail design & Engineering

Mike Goodwin



# Trail Layout

- Linear
- Loop
- Stacked Loops



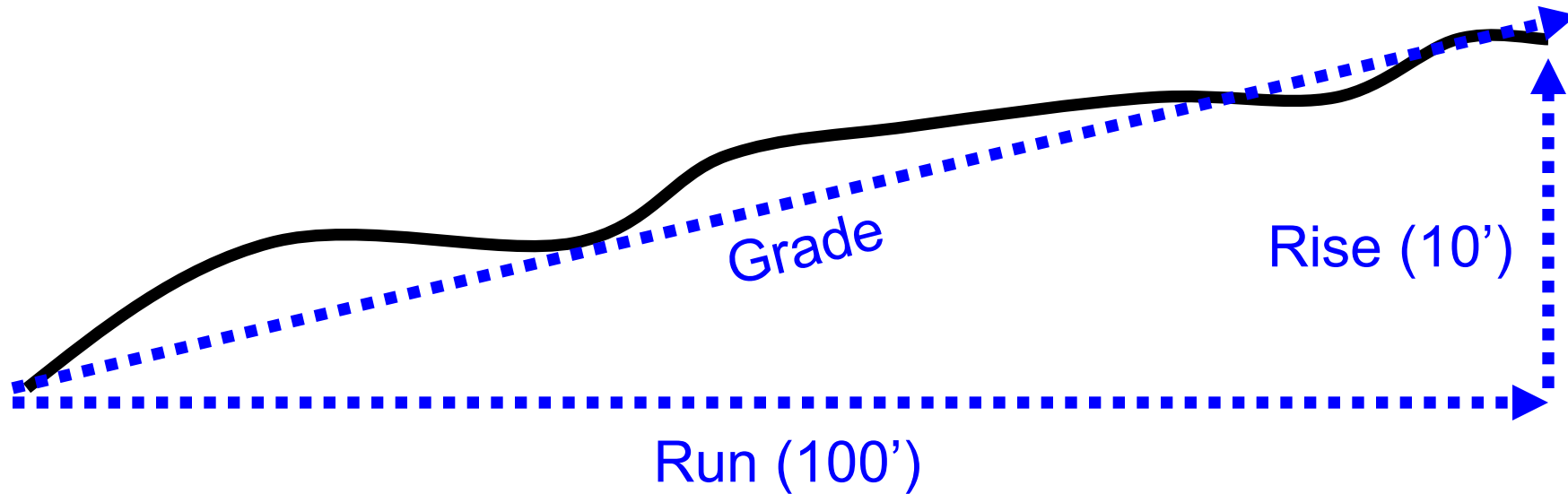
# Positive Control Points View



# Grade or Slope

Change in elevation from one point to another

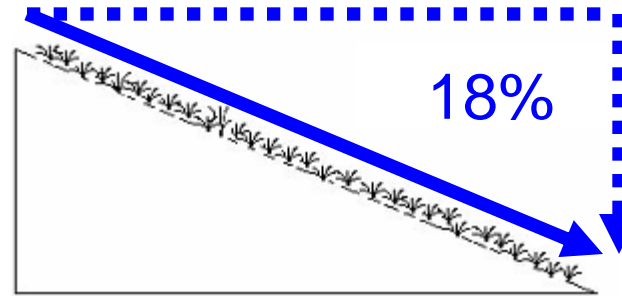
$$\text{Rise over Run: } 10' / 100' = 10\%$$



## Two Simple Rules

- **One-half Rule**

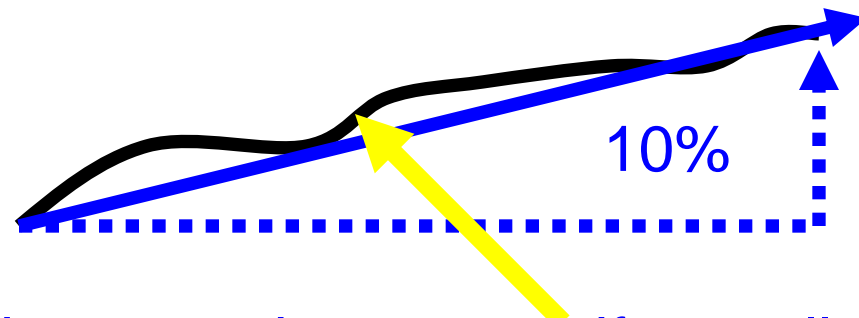
- Trail grade should be less than  $\frac{1}{2}$  of sideslope



18% Sideslope: Trail grade = 9% or less

- **10% Rule**

- Overall trail grade should be 10% or less



Short Sections may be steeper if overall grade is 10% or less

# How do we find the grade?

Using a  
Clinometer

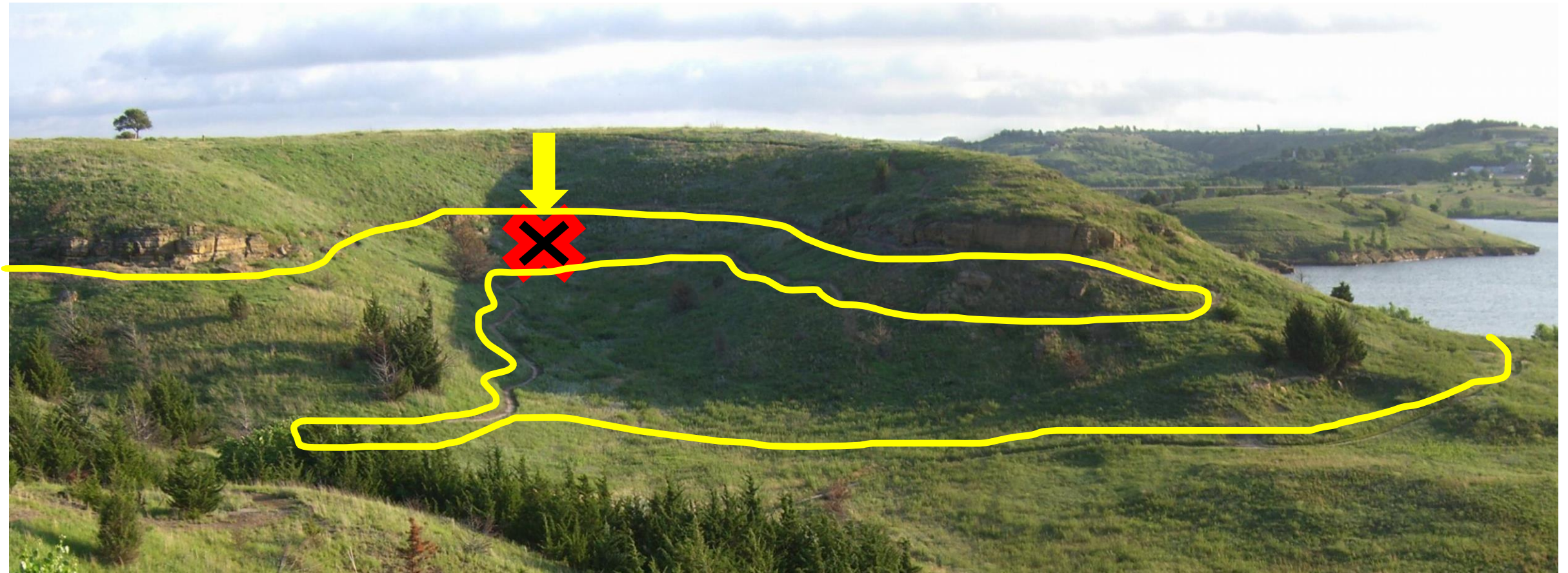
Find a partner as  
tall or taller

Calibrate on level  
ground

Read the grade on  
the trail

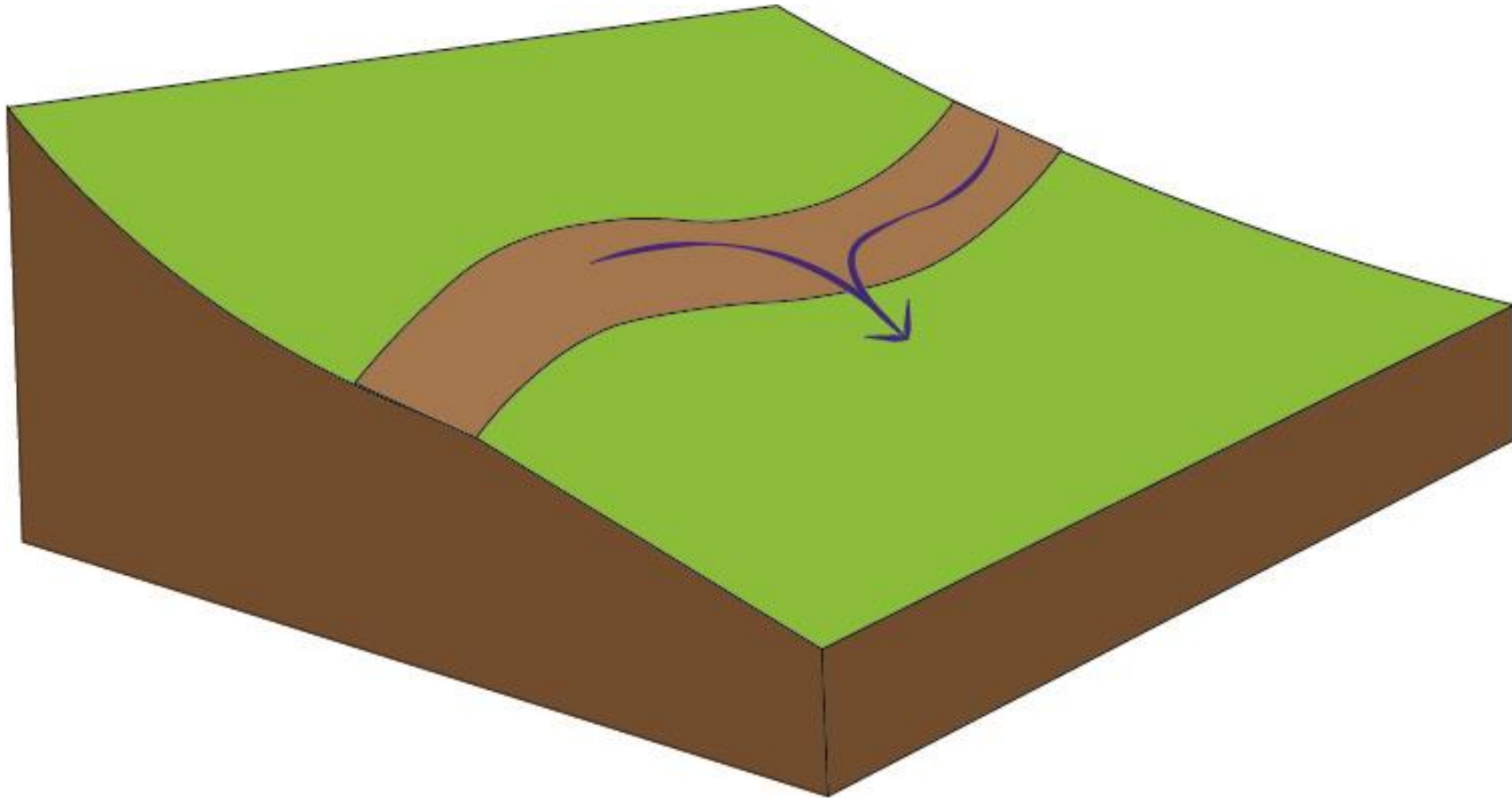


# Fall line vs contour

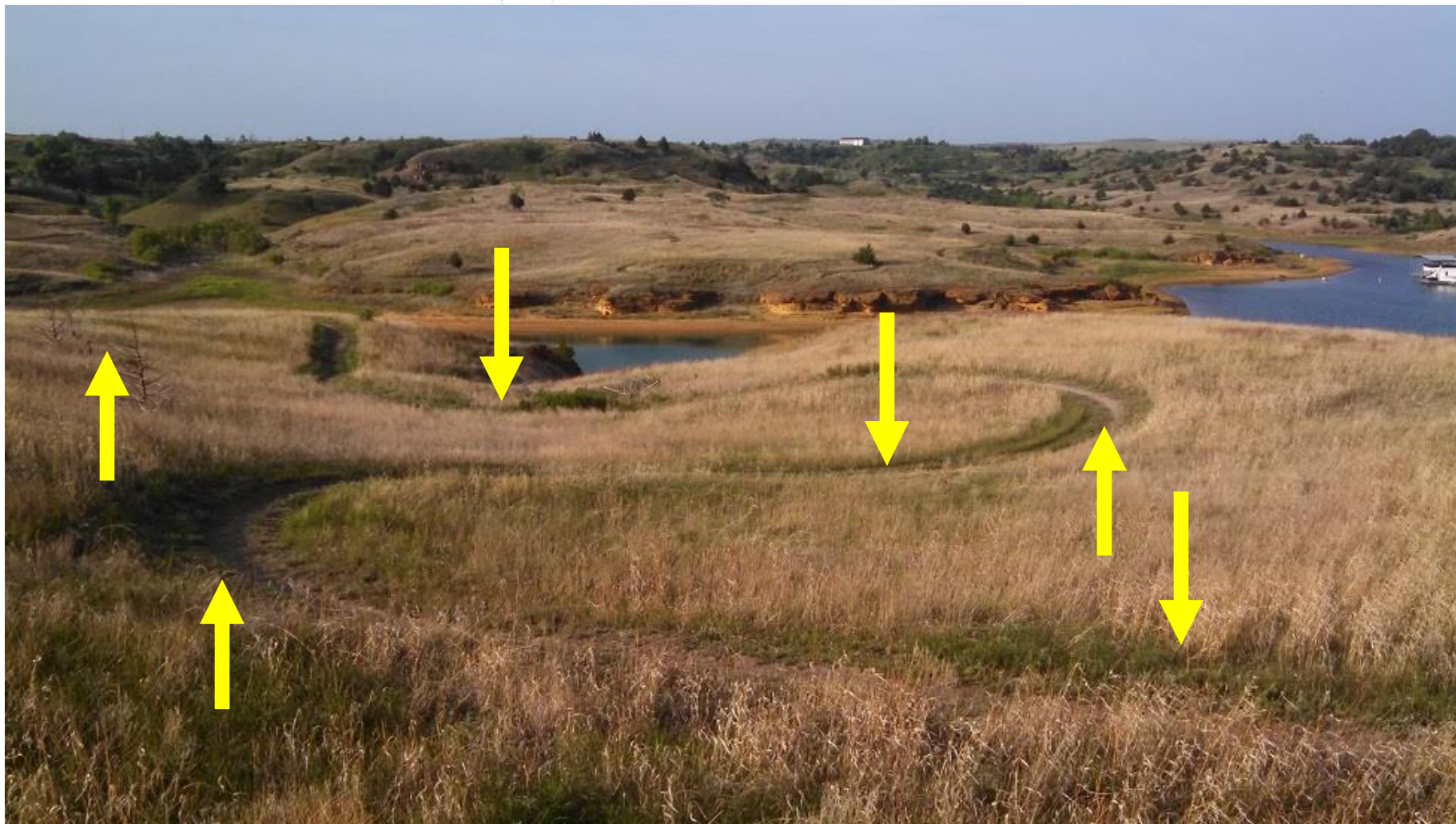




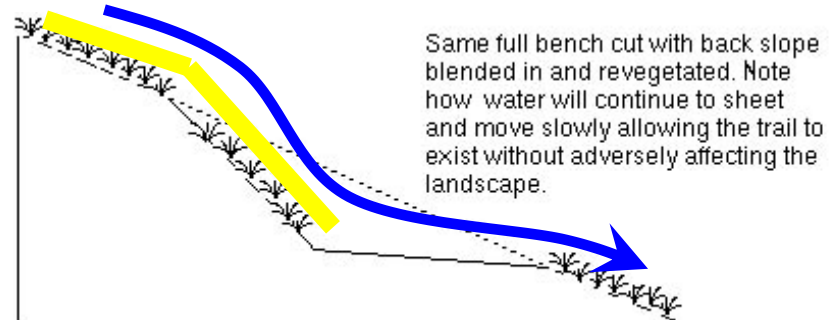
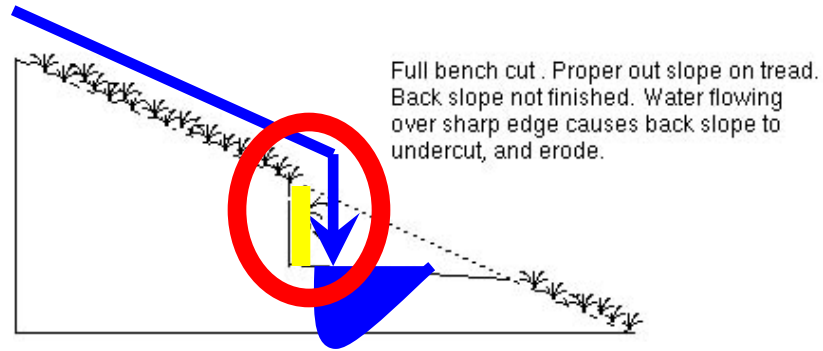
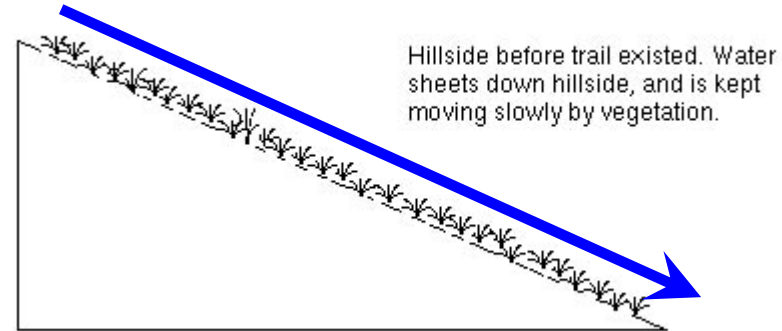
# Grade Reversals



# Grade Reversals



# Benchcut





Tech Tools



John Leahy

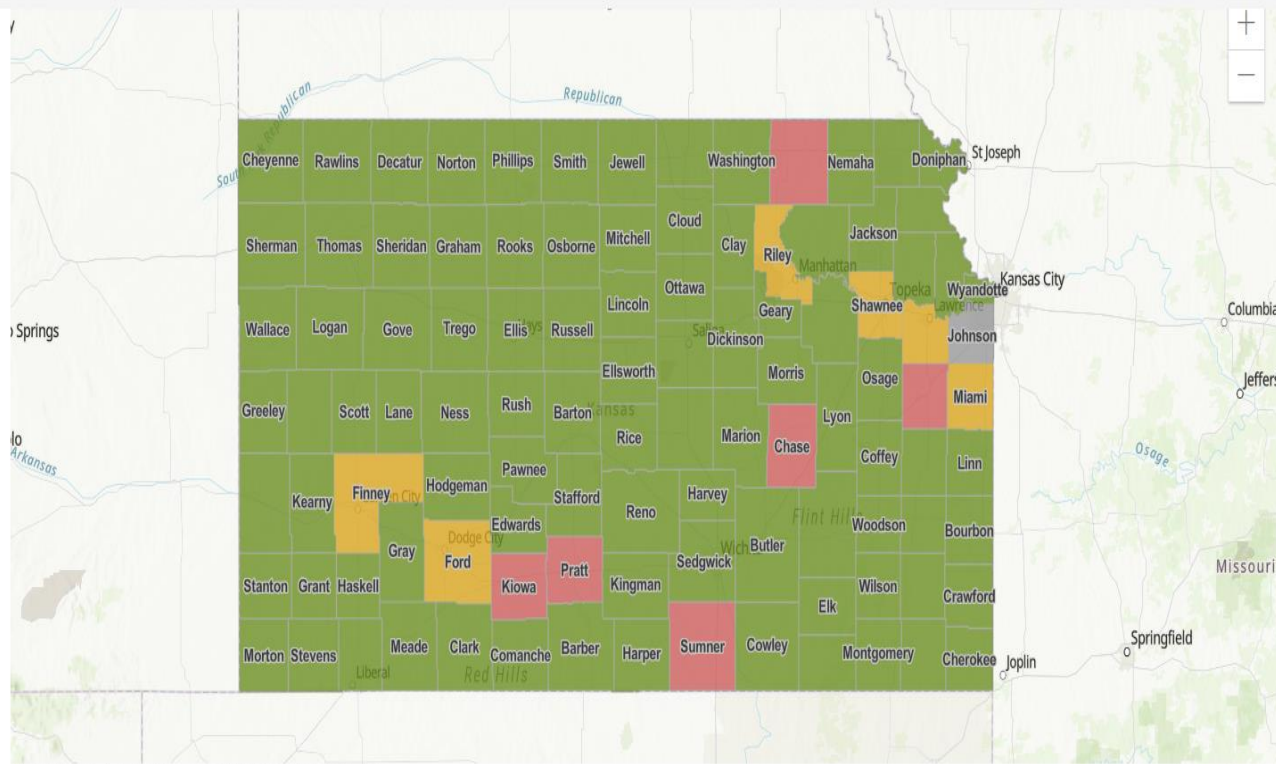


# Tech Tools: GIS

John Leahy



ABOUT COUNTY INFORMATION HOW TO REQUEST GIS PARCEL DATA



Esri, USGS | Esri, HERE, Garmin, FAO, NOAA, USGS, EPA, NPS

Powered by Esri

- Check property lines
- Right of Ways
- Public vs. Private property
- [ORKA](#) or County Appraiser

# Tech Tools: GIS

John Leahy

- Check property lines
- Right of Ways
- Public vs. Private property
- [ORKA](#) or County Appraiser

ORKA Links

|              |             |
|--------------|-------------|
| County       | Allen       |
| Abbreviation | AL          |
| Status       | Map- Public |
| ORKA Link    | View        |
| Other Viewer |             |

Zoom to

Esri, CGIAR, USGS | Missouri Dept. of Conservation, Missouri DNR, Esri, HERE, Garmin, SafeGraph, FAO, METI/NASA, USGS, EPA, NPS

# Tech Tools: GIS

# John Leahy

The screenshot shows a web-based GIS application titled "Open Records for Kansas Appraisers - Allen County". The interface includes a top navigation bar with "Find", "Layers", "Search Results", and "Print" icons. On the left, a "Layers\*" panel lists various data layers with checkboxes: "Boundaries" (checked), "Annotations" (checked), "Parcels" (checked), "NRCS Soils" (unchecked), "School Districts" (unchecked), "NG911 Aerials 2021" (checked), "NG911 Aerials 2018" (unchecked), "NAIP Aerials 2021" (unchecked), "NAIP Aerials 2019" (unchecked), and "NAIP Aerials 2017" (unchecked). The main map area displays an aerial view with yellow and red outlines highlighting specific parcels. A pop-up window titled "Parcel Summary (For Full Report click here)" is open over a parcel. The pop-up contains the following information:

- Add to Multi-Parcel Report** (with a plus icon)
- Parcel ID :** 0011410202001001000
- Owner Name :** KANSAS DEPARTMENT OF WILDLIFE & PARKS
- Location :** 00000 RT 3, Iola, KS 66749.
- Boundary Desc :** S02, T25, R18, BEG 30' S NE COR NW4, S 645.7' W 790', N 645.7', E TO POB.
- Owner Information**
- Owner :** KANSAS DEPARTMENT OF WILDLIFE & PARKS
- Mailing Address :** C/O LINDA LANTERMAN 512 SE 25TH AVE PRATT, KS 67124

At the bottom of the pop-up, there are "Zoom to" and "Full Report" buttons.

- Check property lines
- Right of Ways
- Public vs. Private property
- [ORKA](#) or County Appraiser

# Tech Tools: Google Earth



## John Leahy

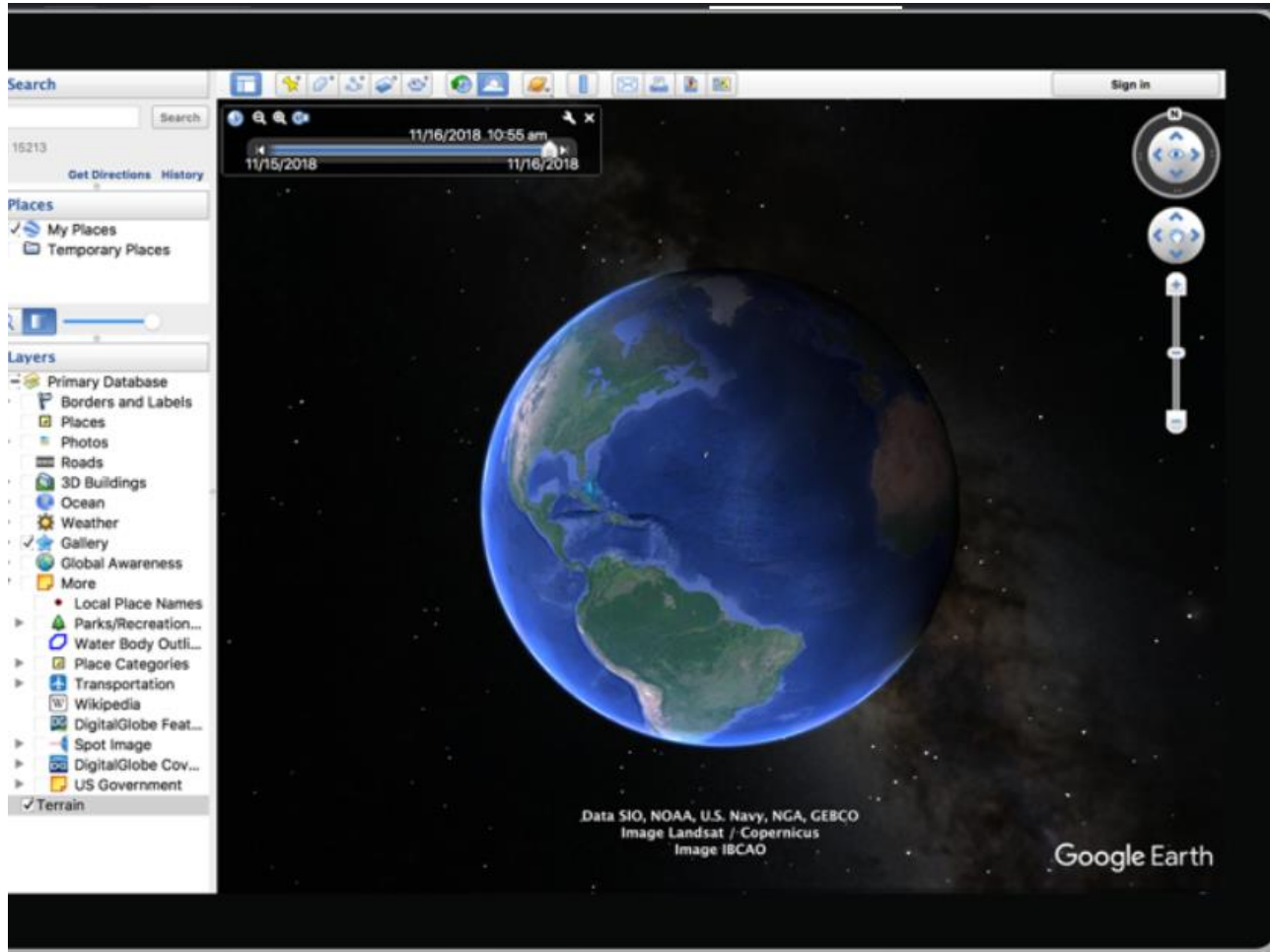
- Free software
- Web, mobile, desktop (Pro)
- Excellent way to communicate with land managers, volunteers, and trail users
- [First Time User Guide](#)



# Tech Tools: Google Earth

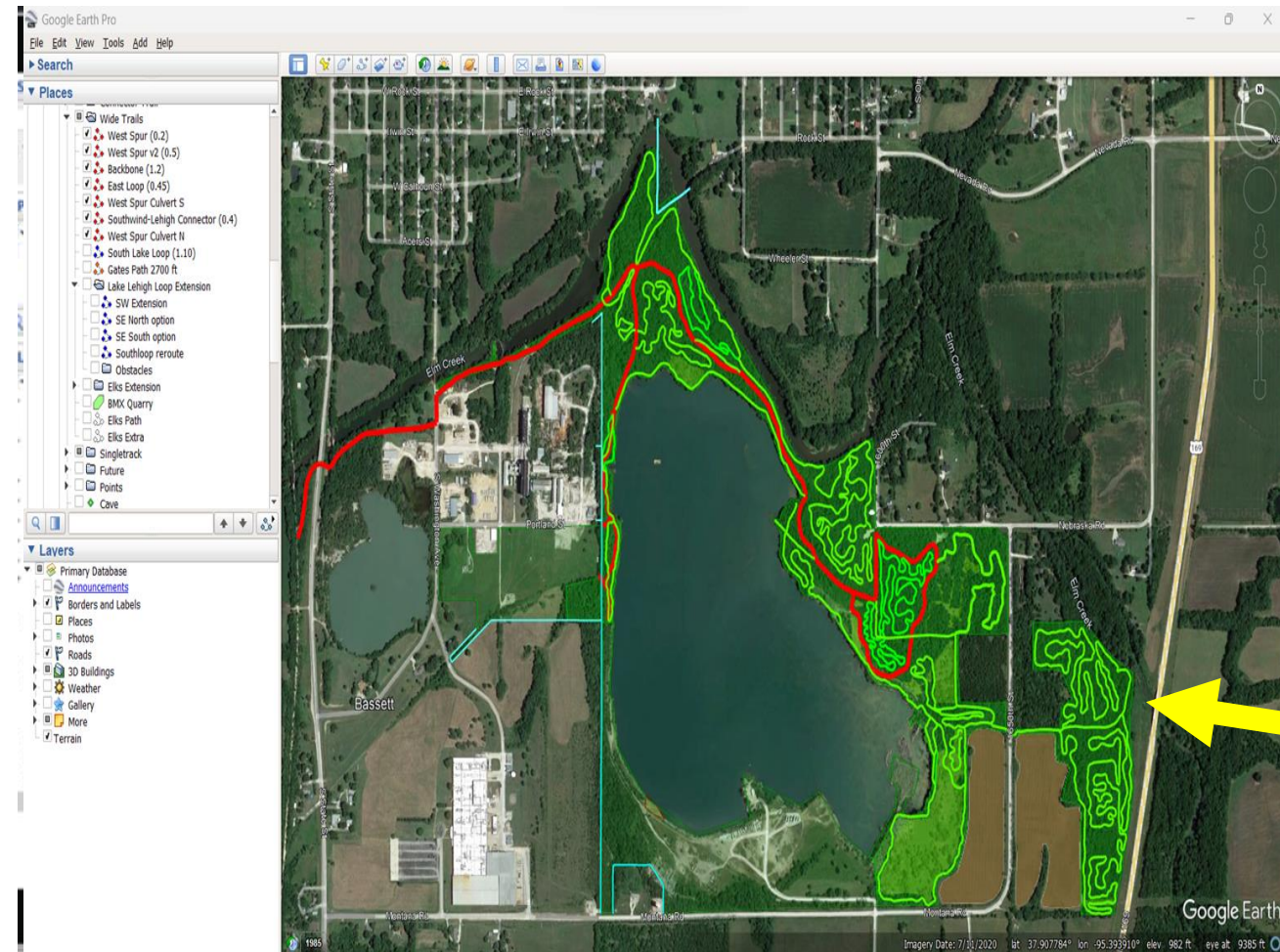
John Leahy

- Desktop download
- Import & export GIS data
- Historical imagery
- Elevation profiles
- Mark positive points of control
- Create maps



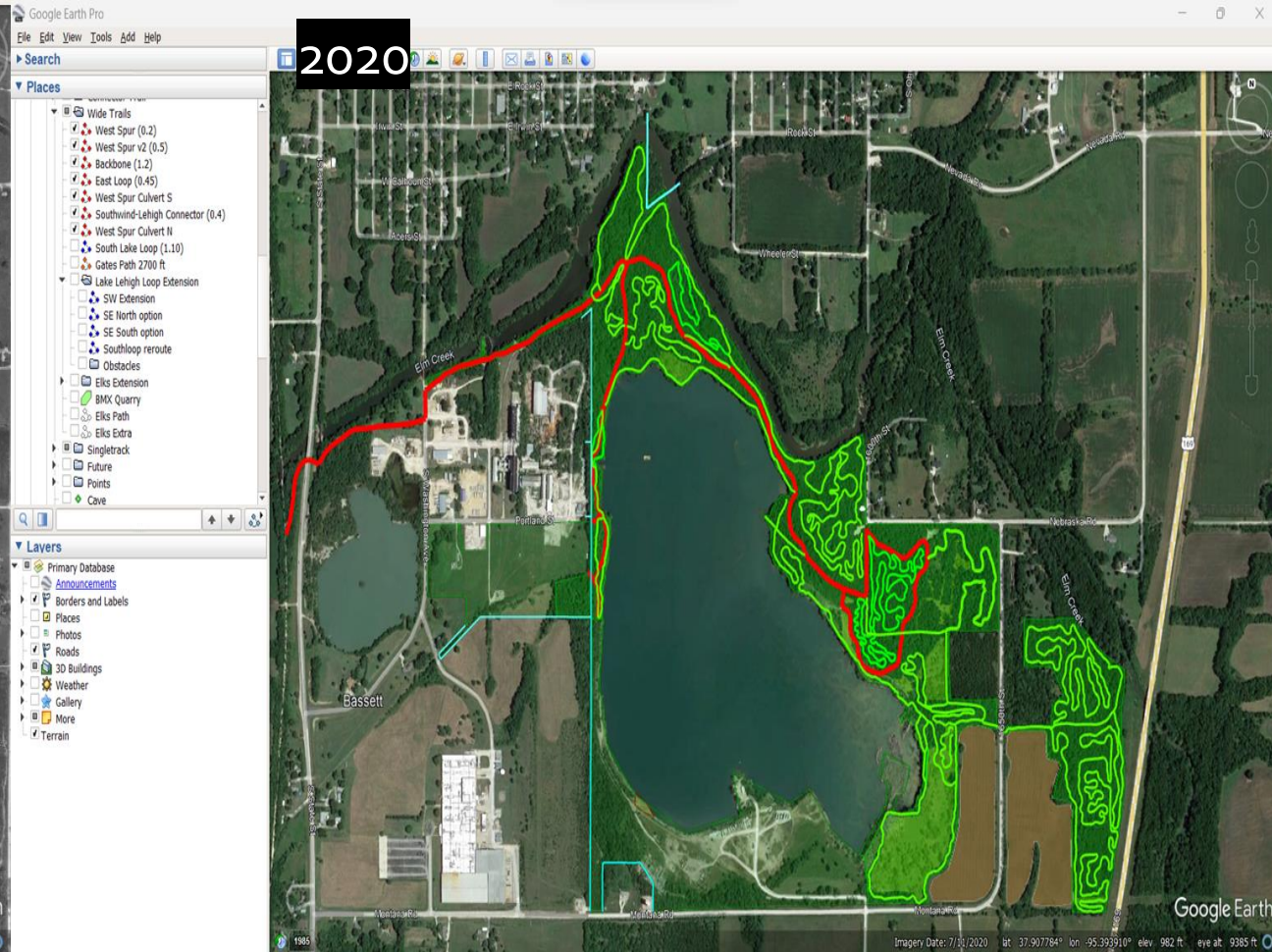
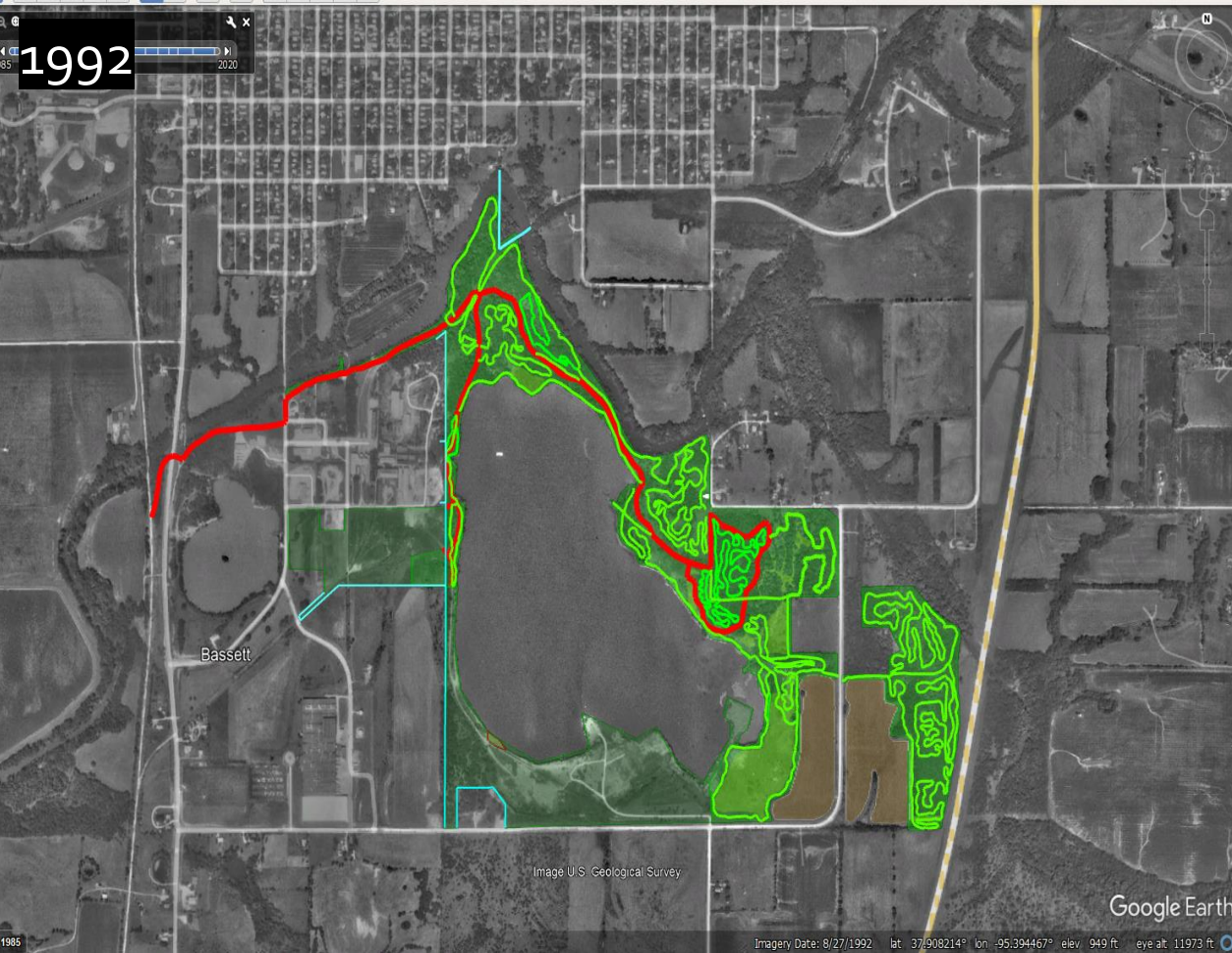
# Tech Tools: Google Earth

John Lea



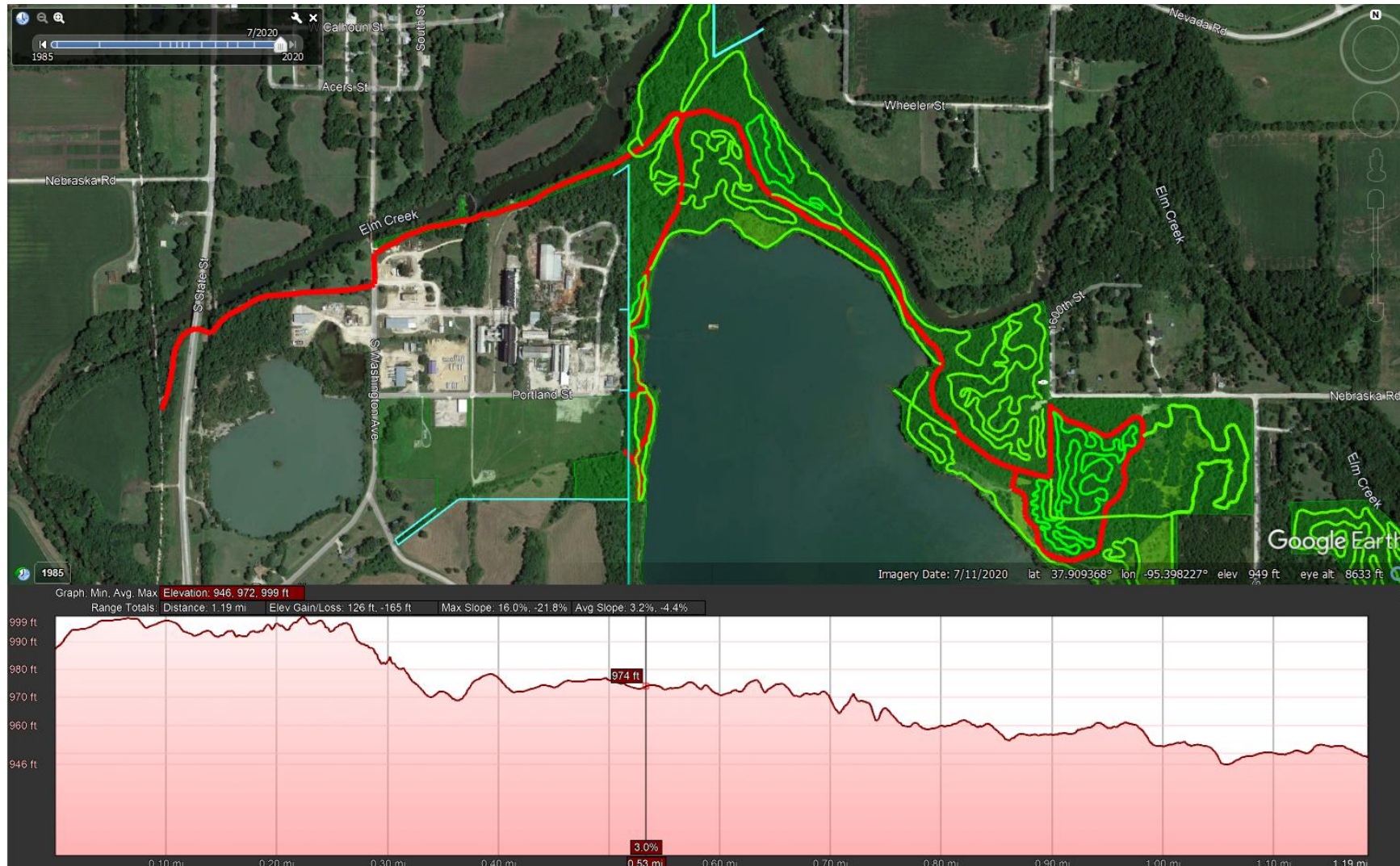
# Tech Tools: Google Earth

John Leahy



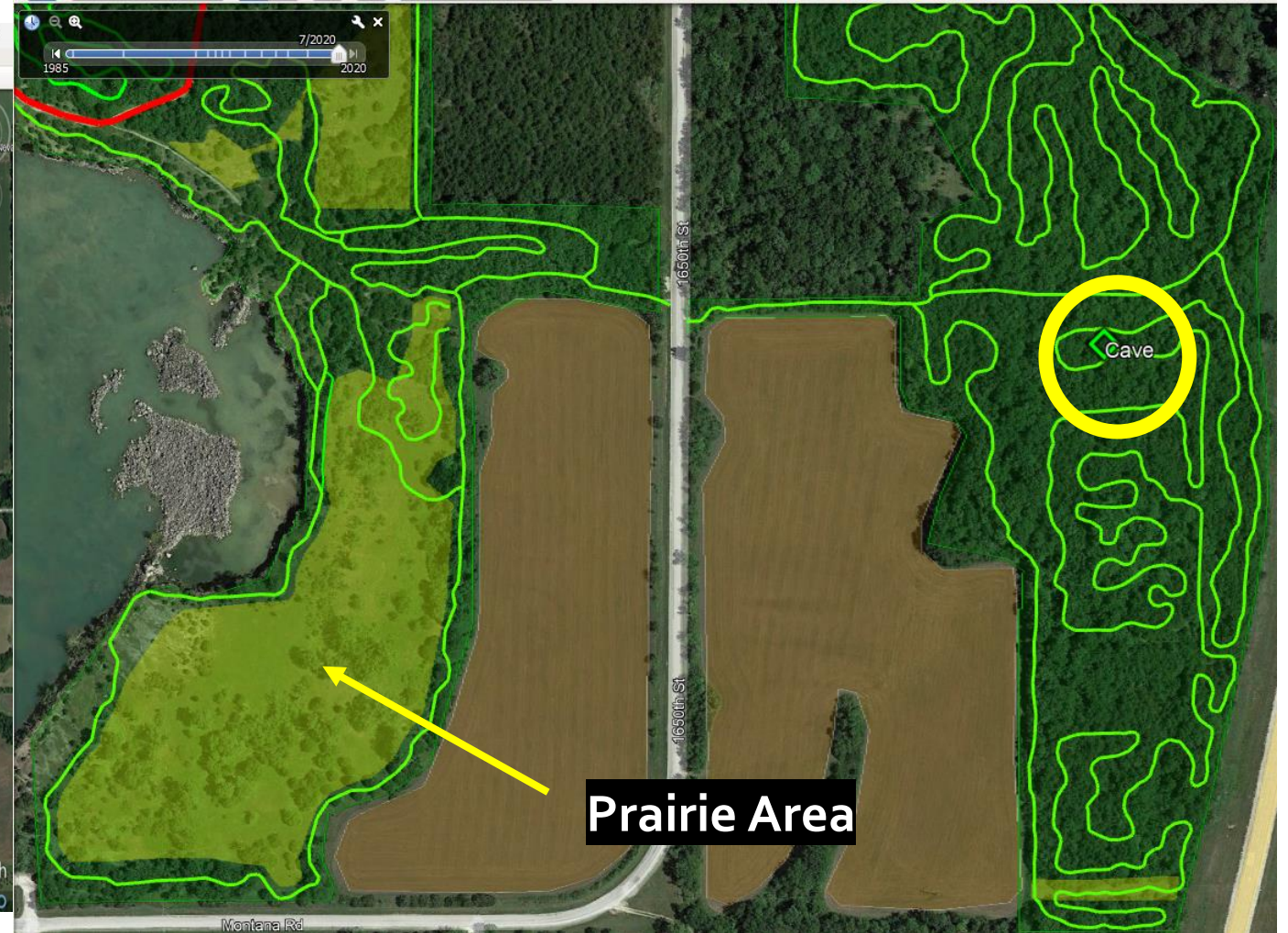
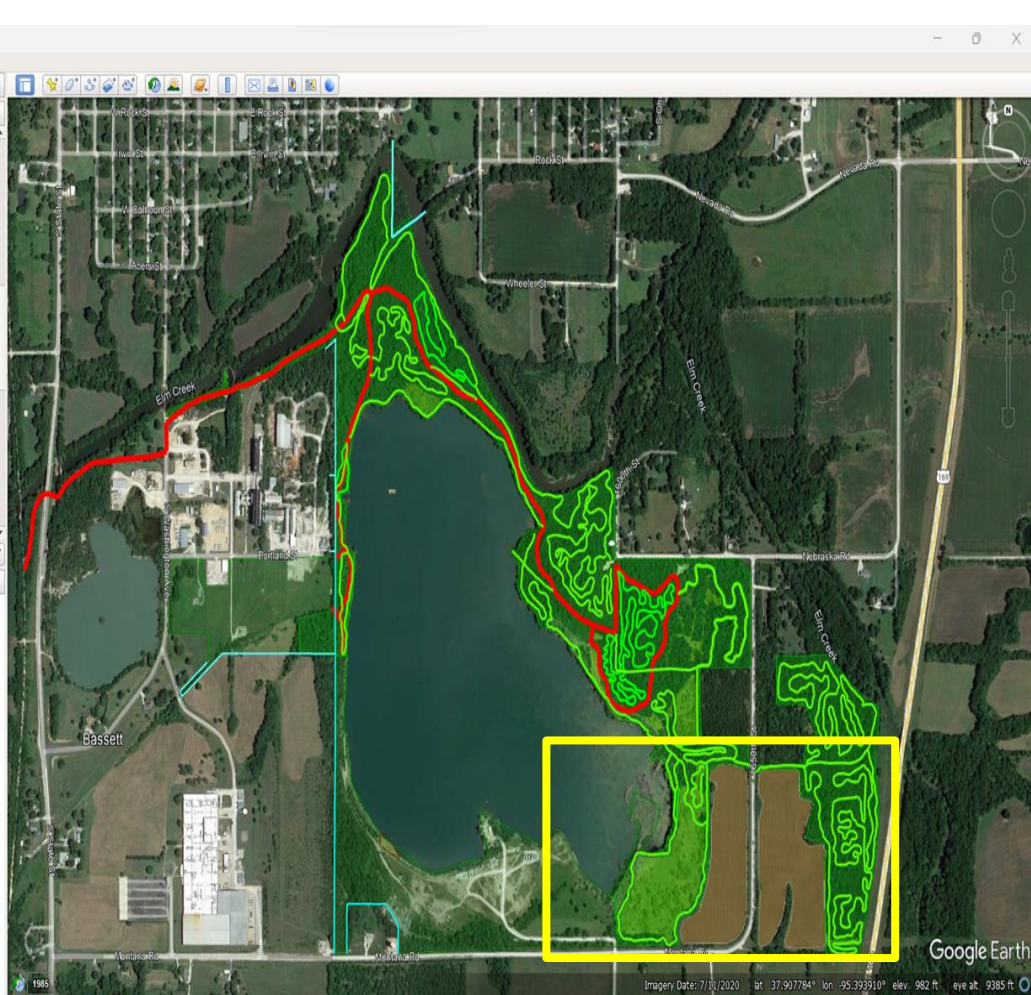
# Tech Tools: Google Earth

John Leahy



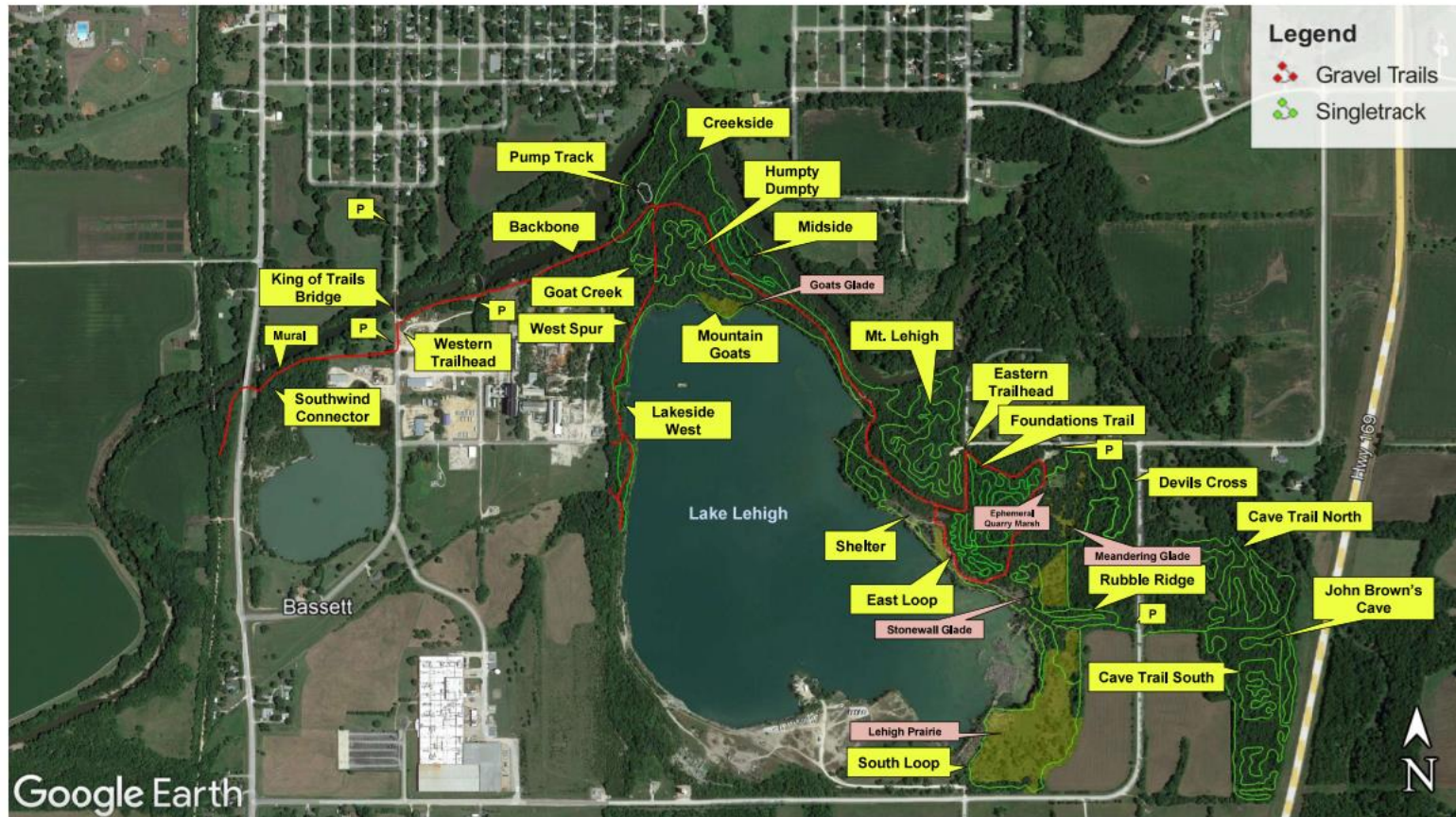
# Tech Tools: Google Earth

John Leahy



# Tech Tools: Google Earth

John Leahy



- Online Maps:
- OpenStreetMap.org
  - MTBProject.com
  - Singletracks.com
  - Trailforks.com



# Working with Others



# Larry Hatfield



# Working With the Land Manager

Larry Hatfield



## Working with:

- Adjacent Landowners
- Municipalities
- Counties
- Railroads





- The hardest job of all
- Getting the word out
- Organizing their efforts
- Not burning them out.

Rally the Volunteers



# Sunflower Foundation

October 10  
November 14  
December 12  
January 9  
February 13  
March 12

Where do we start?  
Let's get started!  
What will this cost?  
Where will we find the money?  
Trail sustainability  
Rail trail issues

2nd Tuesday, Noon-1 pm CT

