

Trail Talk Tuesday

Where Do We Find the Money?

February 13, 2024



Speakers



Elizabeth Burger
Sunflower Foundation



Riston Landwehr
Ks Dept
Wildlife & Parks



Mike Goodwin
Kansas Trails Council



Mike Scanlon
City Manager,
Osawatomie, KS



Nancy Nelson
Osage Cuestas
Trail

Finding Funds: Where to look and how to ask



Elizabeth Burger
Sunflower Foundation



Ad astra per aspera = Finding Money for Trails



Difficult, but doable.

The trick is to know:

WHERE to look

HOW to ask

Focus on Two Sources of Grant Funds

- **Federal/State**

PRO's: Reliable funding, help fund high-dollar projects, opportunity to creatively “braid” grants

CON's: Require extensive time/preparation, potential red tape

- **Foundations; Nonprofits that give grants**

PRO's: Sometimes less rigid, more relationship based

CON's: Less reliable funding (depends on foundation board & strategy), every foundation operates differently

Federal/State Funding for Trails



Transportation Alternative (TA) Program @ KDOT

- Offered on semi-regular basis so stay connected.

NEWS FLASH! 2024 Call for Projects NOW OPEN

<https://www.ksdot.gov/bureaus/burtransplan/TransAlt.asp>

- Good for high-cost projects that require specific and professional services (e.g., engineering).
- Citizen trail advocates can't apply on their own but can be very helpful in assisting local government w/application.
- These are federal funds, so lots of regulations and requirements – but also lots of money. Consider trade-offs.
- TA department at KDOT provides many resources and opportunities for assistance, so reach out.

Evergreen Advice:

Type “TA program at KDOT” in search engine for more on TA funding

Go to: <https://www.ksdot.gov/KansasATP.asp> to learn more about Active Transportation Plan and all resources

- **Informational webinars** – Feb. 5, 8 and 9 (recorded)
- **Concept forms due on-line (required for application)** – March 1
- **Concept forms review and feedback** – March 2024
- **Application links emailed to eligible applicants** – By April 1
- **Applications due on-line** – May 17
- **Application review** – May-July
- **Awards announced** – Summer 2024



KANSAS

TRANSPORTATION ALTERNATIVES



2024 Call for Projects NOW OPEN!

Attend one of 3 webinars focused on construction projects and/or one of 3 webinars focused on Safe Routes to School (SRTS) non-construction projects.

Construction projects, including Safe Routes to School construction projects:

[Online Concept Paper](#)

[Word copy of Concept Paper](#)

IMPORTANT The online submission portal **does not save** work in progress and submissions **must be completed** within a single session. The Word document is provided to prepare responses prior to your online submission.

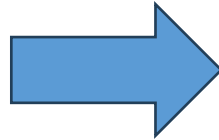
*Please note, the full application is basically the same as the Concept Paper except for a few additional questions and required accompanying documents such as Letters of Support and a Resolution of Support.

[TA Program Guide](#) focused on construction projects - This guide is focused on the application for construction projects; use as a complement to webinar slides available below.

Transportation Alternatives 2022 Awards

Project Sponsor	County	Project Title	TA Award
Atchison - City of	Atchison	Atchison Middle School Safe Routes to School Stage 2-Santa Fe West Sidewalks	\$ 695,492
Augusta - City of	Butler	Redbud Trail - Connection to Augusta	\$ 3,286,974
Baldwin City - City of	Douglas	Maple Leaf Trail Phase 2	\$ 670,000
Belle Plaine - City of	Sumner	Pedestrian Crossing Safety	\$ 338,155
Columbus - City of	Cherokee	Safe Routes to School - Phase 2	\$ 307,200
Council Grove - City of	Morris	Safe Routes to School Priority 1 Improvements	\$ 855,800
De Soto - City of	Johnson	Sunflower Road Multi-Modal Path	\$ 776,486
Dodge City - City of	Ford	Comanche Trail Bike/Ped Trail	\$ 872,776
Dodge City - City of	Ford	South Dodge Walking Trail	\$ 1,697,854
Ellinwood - City of	Barton	Ellinwood Downtown Ped Access and Streetscape Improvements	\$ 1,053,265
Emporia - City of	Lyon	Sidewalk System Improvement Project	\$ 483,744
Eudora - City of	Douglas	K-10/Church Street Shared Use Path	\$ 947,404
Frontenac - City of	Crawford	Sidewalk Improvements	\$ 1,457,458
Garden Plain - City of	Sedgwick	Harry and Main Street Sidewalks	\$ 268,800
Halstead - City of	Harvey	Safe Routes to School Priority 1 Improvements	\$ 401,630
Independence - City of	Montgomery	West Main Multi Use Path and Sidewalk	\$ 980,224
Junction City - City of	Geary	Spring Valley Rd Sidewalk Improvements	\$ 389,000
Lawrence - City of	Douglas	Safe Routes to School - Sidewalk Improvements	\$ 955,000
Leavenworth - City of	Leavenworth	Vilas St ADA and Sidewalk Upgrades	\$ 1,265,840
Manhattan - City of	Riley	Juliette Ave	\$ 1,200,583
Manhattan - City of	Riley	K-18 & 17th St Ped Improvements	\$ 1,193,365
McPherson - City of	McPherson	Northview Trail Phase 2	\$ 856,351
Medicine Lodge/Barber Co	Barber	Iliff Corridor Ped Improvements	\$ 531,516
Neodesha - City of	Wilson	Safe Routes to School - Construction	\$ 864,739
Osawatomie - City of	Miami	John Brown and South Levee Loop Project	\$ 1,530,770
Parsons - City of	Labette	Tolen Creek Trail	\$ 784,272
Sabetha - City of	Nemaha	Oregon Street Sidewalk Project	\$ 533,400
St. George - City of	Pottawatomie	Sidewalk Improvements leading to St. George Elementary School	\$ 1,008,660
Strong City - City of	Chase	Cottonwood St Streetscape Project	\$ 780,000
USD270-Plainville	Rooks	Safe Routes to School Plan Development	\$ 15,000
WaKeeney - City of	Trego	Downtown Pedestrian Access and Streetscape Improvements	\$ 1,287,481
Winfield - City of	Cowley	Pedestrian Access Expansion	\$ 210,670
			\$ 28,499,909

Look at what cities have been funded in the past. Reach out to them and ask about their experience; ask for advice.



Take advantage of every opportunity for learning (webinars, resources, templates) offered by a funding agency.

Active Transportation Planning Toolkit for Small- and Mid-Sized Communities

March 2022

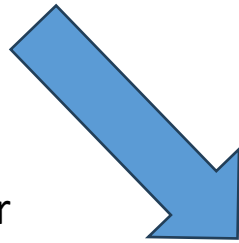


Walk Bike Roll Kansas Virtual Series

You don't have to wait until September to get to know the Kansas Active Transportation Plan. Join us for our monthly Walk Bike Roll Virtual Series.

- **May 24**, 2pm: Meet KATE: Supporting Active Transportation at the State and Local Level. [View the recording.](#)
- **June 28**, 2pm: Active Tourism. [View the recording.](#)
- **July 26**, 2pm: Active Transportation Demonstration Projects 101. [View the recording.](#)
- **August 23**, 2pm: Active Transportation Planning Toolkit. [View the recording.](#)
- **October 25**, 2pm: Increasing Safety for Pedestrians. [View the recording](#)
- **December 13**, 2pm: Mobility and Access for All. [Register here.](#)

So many great webinars to build your knowledge base and give you ideas... listen to them while commuting or exercising.



Kansas Active Transportation

Funding Opportunities for Active Transportation

KDOT Funding Opportunities:

- [Transportation Alternatives](#) - next Call for Projects expected February 2024
- IKE Program: [Community Resources](#)
- KDOT's [Cost Share Program](#) - Call for projects in Spring and Fall. Proposals to integrate pedestrian and bicycle facilities into proposed road projects is encouraged. Stand-alone active transportation projects also eligible.
- [Economic Development](#) - Funds transportation improvements that will recruit new businesses and encourage growth of existing businesses
- Kansas Safe Streets and Roads for [All Match Pilot Program](#)

Federal/State Funding for Trails



- **National Recreational Trail Grants Program (RTP) @ KDWP**
 - Qualifying projects include new trail or trailhead construction, maintenance or reconstruction of existing trails, enhancements or upgrades to existing trails/trailheads, development and planning, or land acquisition and easements.
 - All projects selected must fall into 1 or more of 3 categories: motorized, non-motorized, or diversified recreational trail or trail-related projects.
 - Proposals that provide for improved ADA and environmental impacts will receive a high priority.
- **Land & Water Conservation Grants (LWCF) @ KDWP**
 - Perhaps less well known for community trail projects but worth exploring.
 - Complementary funding thru Outdoor Legacy Partnership Program.

Go to <https://ksoutdoors.com/KDWP-Info/Grants> to learn more and find resources/applications. Contact staff and schedule a conversation. KDWP representative on this call today... your chance to ask questions!

Federal/State Funding for Trails



Many “trail-friendly” grants/resources through **Kansas Department of Commerce**

- Community Development Block Grants (CDBG)

<https://www.kansascommerce.gov/cdbg/sidewalks-trails/>

- Kansas Creative Arts Industry Commission (KCAIC)

<https://www.kansascommerce.gov/program/kansas-creative-arts-and-industries-commission-kcaic/>

- Office of Rural Prosperity (ORP)

<https://www.kansascommerce.gov/orp/>

- Kansas Tourism

<https://www.travelks.com/travel-industry/programs-and-resources/grants/>

<https://www.kansascommerce.gov/grantscalendar/>

Award	Purpose	Maximum Amount	Local Match	Announcement	Application Period	Awards Given	Contact	More information
KCAIC Strategic Investment Program – New and Expanded Works	Supports productions, exhibitions, programs or events by arts organizations	7,500.00 \$	100%	N/A	January – March	May	Curtis.Young@ks.gov	https://www.kansascommerce.gov/program/kcaic/strategic-investment-program/
KCAIC Strategic Investment Program – Equipment and Technology	Purchase equipment, materials and/or technology upgrades	7,500.00 \$	100%	N/A	January – March	May	Curtis.Young@ks.gov	https://www.kansascommerce.gov/program/kcaic/strategic-investment-program/
Mural & Public Art Program (KCAIC)	Support permanent or semi-permanent installations, murals and other public art projects	10,000.00 \$	100%	N/A	January – March	May	Curtis.Young@ks.gov	https://www.kansascommerce.gov/program/kcaic/mural-and-public-art-grant/
Organizational Mentorship (KCAIC)	Provide mentorship services to emerging arts organizations, councils and collectives	7,500.00 \$	100%	N/A	January – March	May	Curtis.Young@ks.gov	https://www.kansascommerce.gov/program/kcaic/organizational-mentorship/
Reimagined Spaces (KCAIC)	Provide publicly accessible spaces for artistic uses and public programming	10,000.00 \$	100%	N/A	January – March	May	Curtis.Young@ks.gov	https://www.kansascommerce.gov/program/kcaic/reimagined-spaces/
Rural Murals (ORP)	Support new murals in rural communities	7,500.00 \$	25%	January	February – April	May	Trisha.Purdon@ks.gov	www.kansascommerce.gov/murals



< All CDBG Programs

SIDEWALKS & TRAILS

Increasing opportunities for community engagement, health, connectedness and vibrancy, this program provides funding to help in the construction of sidewalks and trails connected to recreational facilities.

Have Questions?

Email Ginny Eardley, CDBG Specialist,
ginny.m.eardley@ks.gov
(785) 230-6319

COMMUNITY SHOWCASE MAP

See other communities that have received funding in past years

FUNDING

Up to **\$2,000** per beneficiary with a maximum of

\$600,000

<5,000 Population

\$750,000

>5,000 Population

MATCH

25%

of the total project cost (minus administration)

APPLICATION DEADLINE

May 17, 2024

HOW TO APPLY >

QUALIFY

- ✓ Have an acceptable use project
- ✓ Benefit low-to-moderate income households
- ✓ At least 25% matching funds

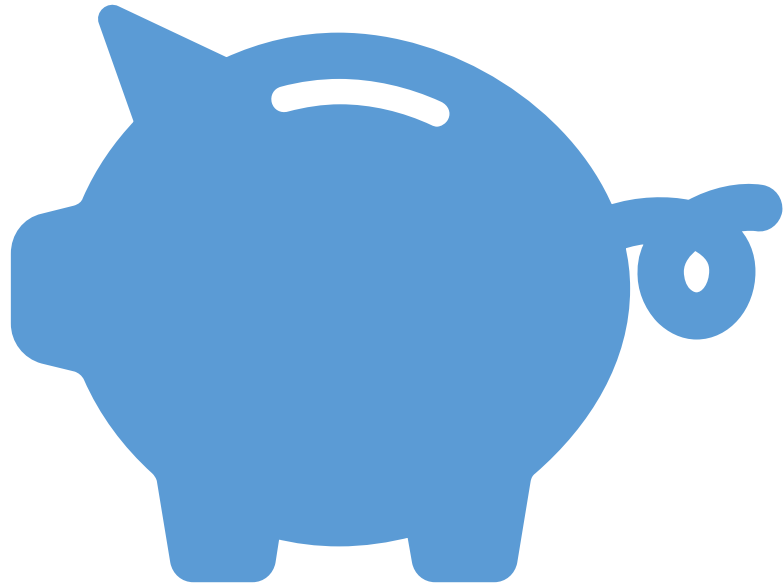
SEE IF YOUR COMMUNITY QUALIFIES

check qualifications programs and more

Select City or County ▾

Program Overview

Foundation Funding for Trails



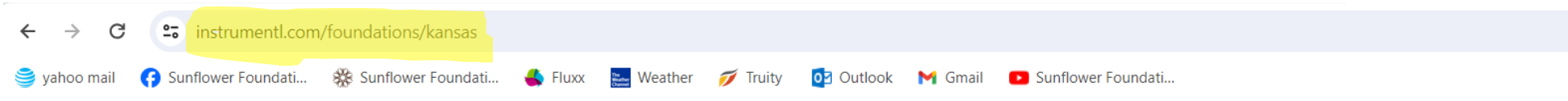
*“If you’ve seen one foundation,
you’ve seen one foundation!”*

Foundations are different from other funding sources... and from each other.

- Different from government agencies.
- Different from charities (“Give a man to fish” analogy – often more interested in upstream systems change than projects)
- Different in structure (community foundation vs. private philanthropy vs. corporate foundation).
- Different in underlying philosophies and how they prefer to work with partners/other funders.

Sooooo.... Do your homework!

Many websites out there to help you identify foundations; the rest of the work is up to you.



instrumentl

Browse Who We Serve About Pricing Resources

TRY 14 DAYS FREE



Foundation Directory | Kansas

Foundations in Kansas

Share

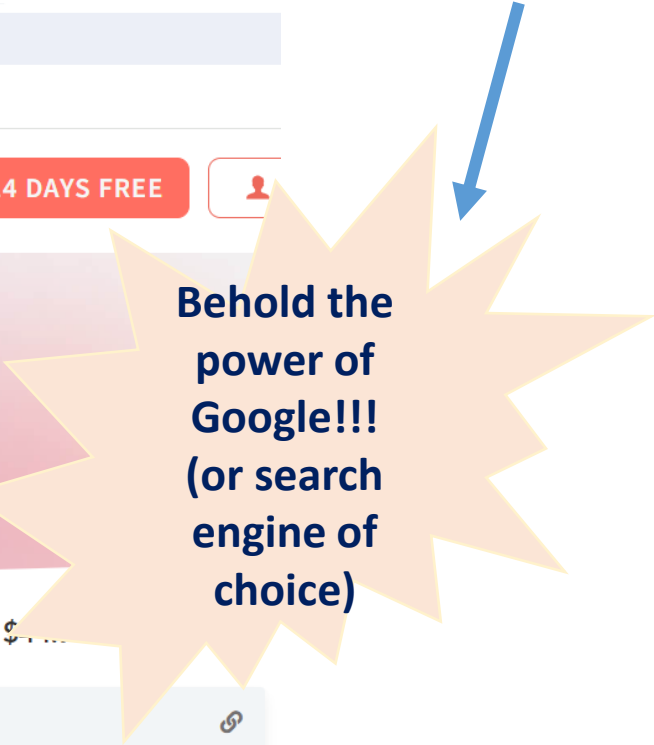
Quick find

BROWSE

- Alabama
- Alaska
- Arizona
- Arkansas
- California
- Colorado
- Connecticut
- Delaware
- District Of Columbia

There are 2,935 foundations giving to nonprofits in Kansas. Combined, these foundations have assets of \$...

Top Foundations by Total Giving in Kansas		
Funder Name	Total Giving	Location
Servant Foundation	\$447,993,870	Overland Park, KS
Heart To Heart International	\$228,276,536	Lenexa, KS
The Sunderland Foundation	\$213,771,465	Overland Park, KS
The Kansas University Endowment Association	\$196,144,271	Lawrence, KS
Kansas Association Of Child Care Resource And Referral Agencies	\$133,760,174	Salina, KS
Unbound	\$115,465,826	Kansas City, KS
Ckr4 Inc	\$111,215,000	Wichita, KS



Headwaters Economics

https://headwaterseconomics.org/wp-content/uploads/Trails_Funding_Resources_2018.pdf

THREE PAGES OF FUNDING SOURCES!


Funding Sources For Trails Development

FUNDING SOURCE	AGENCY/ ORGANIZATION	NOTES
Private Foundations and Organizations		
National Trails Fund Grants	American Hiking Society / L.L. Bean	Must be a member of the Alliance of Hiking Organizations to apply. Grants are between \$500 - \$3,000 to improve hiking access or hiker safety on a particular trail. Link: https://americanhiking.org/national-trails-fund/
Doppelt Family Trail Development Fund	Rails-to-Trails Conservancy	Grants to build and improve multi-use trails. Grants range from \$5,000 to \$30,000. Link: https://www.railstotrails.org/our-work/doppelt-family-trail-development-fund/
BF Goodrich Tires Outstanding Trails Grant	BF Goodrich Tires	For sustainable and responsible off-roading clubs to help preserve local off-road trails. Link: https://garage.bfgoodrichtires.com/db/special-projects/record/outstanding-trails
NFF Matching Awards Program (MAP)	National Forest Foundation (NFF)	On-the-ground projects that enhance forest health and outdoor experiences on or near National Forests and Grasslands. Can be used to improve recreation resources like trails and bridges, and to engage youth or volunteers in stewardship work. Does not have to be on National Forest or Grassland but must benefit those lands. Match: 50/50 nonfederal cash match required. Link: https://www.nationalforests.org/grant-programs/map
REI Stewardship Grants	REI	Stewardship grants for outdoor access. Must be invited to apply by local REI store. Link: https://www.rei.com/stewardship/creating-access
Local-Level		
Businesses	<ul style="list-style-type: none"> • Corporate foundations: grants, volunteers • Small businesses or business partnerships: co-branding, events, sponsorship 	
Non-Profit Organizations	<ul style="list-style-type: none"> • Community foundations • Non-profit collaborators 	
Local Government	<ul style="list-style-type: none"> • Ballot initiative: bonds, levies • Granting programs • Tax districts, such as resort tax, tax increment finance districts (TIF), improvement districts, renewal districts 	

Tips for Finding the Money

 **Think Big, Start Small**


- ✓ Invest in planning at many scales, from individual project master plans to community plans and policies (e.g., neighborhood plans, transportation plans, comprehensive/growth plans).
- ✓ Identify phases that could be completed individually in sequence.
- ✓ Be patient and persistent.

 **Tell The Story**

- ✓ Don't rely only on data—tell human stories.
- ✓ Explain the community impact. Share real examples about how individuals, neighborhoods, and the community will benefit.
- ✓ Use testimonials from real people.

 **Be Proactive About Match**


- ✓ Demonstrate your commitment by having skin in the game. Be willing to take risks.
- ✓ Be creative and think broadly about how all partners contribute to the project.

 **Communicate Well**


- ✓ Practice articulating the need, community impact, and your organizational effectiveness.
- ✓ Use clear, concise writing. Make use of bullets and headlines to simplify for the reader.
- ✓ Address grant criteria directly and explicitly.

 **Be A Collaborator**

- ✓ Find overlap in your goals and values with your partners. Know where you are aligned.
- ✓ Be reciprocal in your requests and offers of help.
- ✓ Consider stretching your project to meet the needs of partners where possible.

 **Use Data & Evidence**

- ✓ Demonstrate the need using data.
- ✓ Measure and monitor whether you are achieving your goals and adapt accordingly.

 **Start Early**

- ✓ Building community will and trust with partners takes time.
- ✓ Develop internal deadlines.
- ✓ Buffer time for external processes and input, including reviews, letters of support, and partner approval.

 **Anticipate Hurdles**

- ✓ Honestly listen to and learn from the concerns of your community.
- ✓ Work with neighbors and other concerned parties early and often.
- ✓ Plan and budget for mitigating reasonable concerns with strategies like landscaping, fencing, signage, and amenities.
- ✓ Commit to stewardship with monitoring and maintenance.

Great Grant Seeking/Grant Writing Websites

Network for Good

<https://www.networkforgood.com/>

"Resources" in top bar menu, check out "Blog Posts, Webinars, Templates" in drop down menu

Free Will

<https://www.freewill.com/>

"For Nonprofits" in top bar menu, check out "Resources" or "Webinars" in drop down menu

Philanthropy News Digest

<https://philanthropynewsdigest.org/>

Go to "RFPs" in top address bar menu, right hand side

Chronicle for Philanthropy

<https://www.philanthropy.com/>

Check out "Advice" and "Opinion" in the top bar menu - Beware: the "Grants" section requires \$

Raise Funds – Raise Money, Nurture Relationships & Build Support for Nonprofit Organizations

<https://www.raise-funds.com/>

Check out "Fundraising" & "Donor Relations" in top bar menu - but tons of other good resources

35 Best Grant Writing Blogs and Websites

https://blog.feedspot.com/grant_writing_blogs/

Professional Grantwriter

<https://www.professionalgrantwriter.org/>

Check out "Blog" in top address bar, "Foundations" in drop down menu

Candid

<https://candid.org/>

Get free access to Candid's [Foundation Directory](#), the smartest, fastest way to win more funding.

Get free access to [GuideStar](#), nonprofit research tool, the largest source of verified information on nonprofits.

Use the map search below to locate where you can access Candid's resources.

<https://candid.org/find-us>

This handout will be
available as a resource!





Take the time to research the foundation

- Really READ the website (if available)
- Mission, values, philosophy
- What do they fund? Areas of interest?
- Read annual reports for lists of grant awards; then visit websites of grantees
- Sign up for any e-news type service

Learn the protocols

- Do they encourage phone calls and emails?
- Do they ever take unsolicited requests or RFPs only?
- Do you know colleagues who worked with that foundation before? Do you have personal connections?

Send a polite, succinct email sharing information about your community, project, goals. Ask if it's possible to speak briefly by phone to share more. Do not expect funding the first time you reach out... think of it as the first step in starting a relationship.

Kansas Organizations with History of Trail Funding:

- Sunflower Foundation
- Patterson Family Foundation
- BCBS Pathways to a Healthy Kansas
(must be Pathways community)
- Sunderland Foundation
- Myriad of local foundations

National Organizations with History of Trail Funding:

- T-Mobile Hometown Grants
- AARP Community Challenge Grant
- America Walks Community Change Grants
- The Trail Fund Program (American Trails)
- National Trails Fund (American Hiking Society)
- The Conservation Alliance Grants
- PeopleforBikes Community Grants

Don't limit yourself to "trail funding" organizations! The key is finding how your trail "fits" with a foundation's stated mission and focus (e.g., youth development, mental health, environmental education, etc.) then making your case how a trail fits that sweet spot.



MESSAGE

The trail is **more** than physical infrastructure and the great experience it provide to each **individual** user.

The trail is a valuable tool that can play a key role to address **upstream community** conditions that lead to problems **downstream**.



Trails have to the potential to be a vehicle or catalyst to advance a larger movement; the trail is a tool to reach an even larger goal.

Think: How Can Trails Do the Following?

- * Provide unique benefits – far beyond “getting a workout” - to populations with a history of disinvestment, discrimination, and/or neglect?
- * Represent a physical marker to acknowledge and address systemic racism?
- * Increase community resilience, civic discourse, collective understanding?
- * Improve our current strategies around mental health – and its downstream deleterious correlates and effects– by optimizing nature-derived benefits?
- * And because it invites and evokes such an individual experience – be a blank slate for tangible actions to inspire health equity at population level?



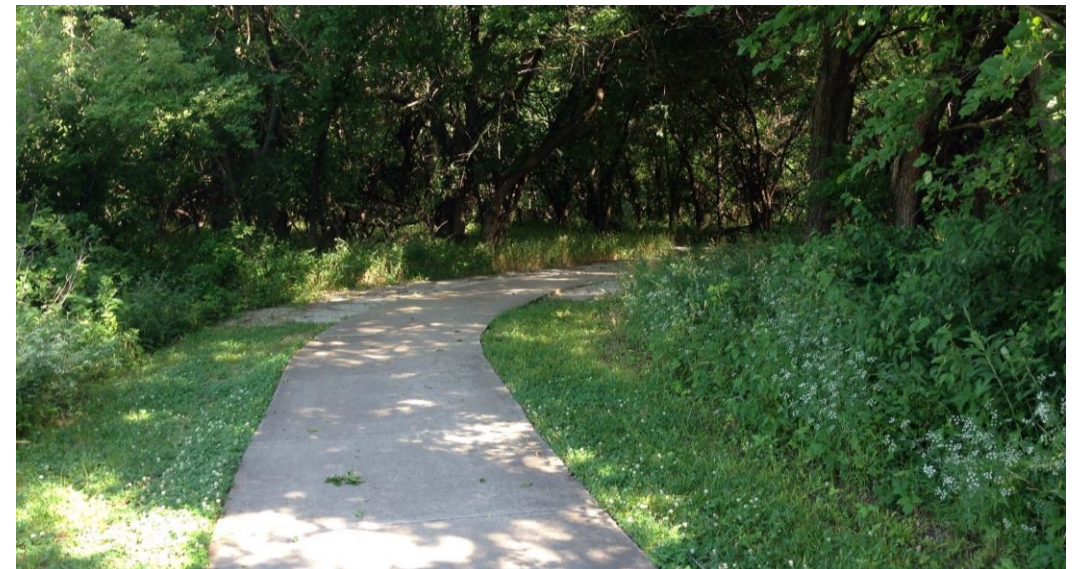
End of the Trail... or at least this presentation.

Land and Water Conservation & Recreation Trails Program Grants



Riston Landwehr

Kansas Dept of Wildlife & Parks







FUNDING SOURCE



Federal Highway Trust Fund

- Off road/recreational fuel tax.



Offshore Oil and Gas Leasing

Great American Outdoors Act – 2020

- Full and Permanent Funding of LWCF
- \$900 Million Annually





GENERAL INFORMATION



- Reimbursable up to 80%
- Eligibility: County, Municipal, Non-Profits
- Acquisition and Development of Trails
- Annual Allocation – Kansas: ~\$2M
 - 30% Motorized
- Application Deadline: Mid November

- Reimbursable up to 50%
- Eligibility: Counties/Municipalities
 - Perpetual Stewardship
- Acquisition and Development of Outdoor Rec.
- Annual Allocation – Kansas: ~3.5M
- Application Deadline: Mid September



ELIGIBLE PROJECTS



- Trail Development
- Trailheads
- Supporting Facilities
 - Lighting, restrooms, benches, parking, etc.
- Maintenance and Restoration
- Equipment for Construction and Maintenance
- Safety and Environmental Education
- **Motorized Trails**

- All things OUTDOOR Recreation

- Signage
- Swimming Pools
- Sports Complexes
- **TRAILS**
- Golf Courses
- Playgrounds
- Ball Fields
- Visitor Centers
- Shelters
- Supporting Facilities
- Campgrounds
- Roadways
- Splash Pads
- Pickleball Courts

BUILD AMERICA, BUY AMERICA

The Three M's Mined – Milled – Manufactured

[“Buy America” Domestic Sourcing Guidance and Waiver Process for DOI
Financial Assistance Agreements | U.S. Department of the Interior](#)

[Buy America - Construction Program Guide - Contract Administration
- Construction - Federal Highway Administration \(dot.gov\)](#)



Kansas
Department of
Wildlife and Parks



Cherie Riffey
RTP Grant Coordinator
KDWP – Parks Division
cherie.riffey@ks.gov
620 672 5911



Riston Landwehr
LWCF Grant Coordinator
KDWP – Parks Division
riston.landwehr@ks.gov
620 672 5911

[Grants / State Parks / KDWP - KDWP \(ksoutdoors.com\)](https://ksoutdoors.com)

Building Your Budget



Mike Goodwin

Kansas Trails Council



Organize Your Grant Request With Budget Spreadsheet & Contractor Quotes

Enter data in yellow cells

Example Trail Budget - Gravel Trail												
Reference	Detail		Cost*	Category**								
1	Gravel***		7,193	Grant Funding	Gravel/Screenings							
2	Screenings***		5,565	Grant Funding	Depth (In.)	3.00						
3	Skid Steer		2,500	Cash Match	Length (Ft.)	4,200						
4	Culvert		1,000	Cash Match	Width (Ft.)	6.00	(cy x 1.5)				Cost	
5	Trailhead Kiosk		3,500	Cash Match	Gravel	233.33	cubic yards	350.00	tons	\$ 20.55	per ton	7,193
6	Kiosk & trail signage/maps		1,000	InKind Match	Screenings	233.33	cubic yards	350.00	tons	\$ 15.90	per ton	5,565
7	Bridge		4,000	InKind Match								
8	Bridge footings engineering		1,000	InKind Match								
Total Project Cost			\$ 25,758									
Grant Limit		50%	\$ 12,879									
Grant Category Totals & %				% of Project								
**	Grant Funding		\$ 12,758	49.5%								
**	Cash Match		7,000	27.2%								
**	InKind Match		6,000	23.3%								
Total Project			\$ 25,758									

Notes	
*	Enter data in yellow cells
**	Categories are automatically summed
***	Calculated total cost based on \$/ton

For a working copy of this spreadsheet, email us at: info@kansastrailsCouncil.org

Attach contractor quotes or cost estimates and label with reference number to tie to spreadsheet

Example Trail Budget - Gravel Trail

Reference	Detail	Cost*	Category**						Cost	
1	Gravel***	7,193	Grant Funding	Gravel/Screenings						
2	Screenings***	5,565	Grant Funding	Depth (In.)	3.00					
3	Skid Steer	2,500	Cash Match	Length (Ft.)	4,200					
4	Culvert	1,000	Cash Match	Width (Ft.)	6.00	(cy x 1.5)				
5	Trailhead Kiosk	3,500	Cash Match	Gravel	233.33	cubic yards	350.00	tons	\$ 20.55 per ton	7,193
6	Kiosk & trail signage/maps	1,000	InKind Match	Screenings	233.33	cubic yards	350.00	tons	\$ 15.90 per ton	5,565
7	Bridge	4,000	InKind Match							
8	Bridge footings engineering	1,000	InKind Match							
Total Project Cost		\$ 25,758								
Grant Limit		50%	\$ 12,879							
Grant Category Totals & %			% of Project							
**	Grant Funding	\$ 12,758	49.5%							
**	Cash Match	7,000	27.2%							
**	InKind Match	6,000	23.3%							
Total Project		\$ 25,758								

Notes

- * Enter data in yellow cells
- ** Categories are automatically summed
- *** Calculated total cost based on \$/ton

Get contractor project quotes

OR

Calculate gravel costs using \$/ton

Example Trail Budget - Gravel Trail

Reference	Detail	Cost*	Category**						Cost
1	Gravel***	7,193	Grant Funding	Gravel/Screenings					
2	Screenings***	5,565	Grant Funding	Depth (In.)	3.00				
3	Skid Steer	2,500	Cash Match	Length (Ft.)	4,200				
4	Culvert	1,000	Cash Match	Width (Ft.)	6.00	(cy x 1.5)			
5	Trailhead Kiosk	3,500	Cash Match	Gravel	233.33	cubic yards	350.00	tons	\$ 20.55 per ton
6	Kiosk & trail signage/maps	1,000	InKind Match	Screenings	233.33	cubic yards	350.00	tons	\$ 15.90 per ton
7	Bridge	4,000	InKind Match						
8	Bridge footings engineering	1,000	InKind Match						
Total Project Cost		\$ 25,758							
Grant Limit		50%	\$ 12,879						
Grant Category Totals & %			% of Project						
**	Grant Funding	\$ 12,758	49.5%						
**	Cash Match	7,000	27.2%						
**	InKind Match	6,000	23.3%						
Total Project		\$ 25,758							

Notes	
*	Enter data in yellow cells
**	Categories are automatically summed
***	Calculated total cost based on \$/ton

Enter Funding Category Label for each cost element

Example Trail Budget - Gravel Trail

Reference	Detail	Cost*	Category**						Cost	
1	Gravel***	7,193	Grant Funding	Gravel/Screenings						
2	Screenings***	5,565	Grant Funding	Depth (In.)	3.00					
3	Skid Steer	2,500	Cash Match	Length (Ft.)	4,200					
4	Culvert	1,000	Cash Match	Width (Ft.)	6.00	(cy x 1.5)				
5	Trailhead Kiosk	3,500	Cash Match	Gravel	233.33	cubic yards	350.00	tons	\$ 20.55 per ton	7,193
6	Kiosk & trail signage/maps	1,000	InKind Match	Screenings	233.33	cubic yards	350.00	tons	\$ 15.90 per ton	5,565
7	Bridge	4,000	InKind Match							
8	Bridge footings engineering	1,000	InKind Match							
Total Project Cost		\$ 25,758								
Grant Limit		50%	\$ 12,879							
Grant Category Totals & %			% of Project							
**	Grant Funding	\$ 12,758	49.5%							
**	Cash Match	7,000	27.2%							
**	InKind Match	6,000	23.3%							
Total Project		\$ 25,758								

Enter Funding Category Labels

Spreadsheet totals each category

Notes	
*	Enter data in yellow cells
**	Categories are automatically summed
***	Calculated total cost based on \$/ton

Example Trail Budget - Gravel Trail

Reference	Detail	Cost*	Category**						Cost	
1	Gravel***	7,193	Grant Funding	Gravel/Screenings						
2	Screenings***	5,565	Grant Funding	Depth (In.)	3.00					
3	Skid Steer	2,500	Cash Match	Length (Ft.)	4,200					
4	Culvert	1,000	Cash Match	Width (Ft.)	6.00	(cy x 1.5)				
5	Trailhead Kiosk	3,500	Cash Match	Gravel	233.33	cubic yards	350.00	tons	\$ 20.55 per ton	7,193
6	Kiosk & trail signage/maps	1,000	InKind Match	Screenings	233.33	cubic yards	350.00	tons	\$ 15.90 per ton	5,565
7	Bridge	4,000	InKind Match							
8	Bridge footings engineering	1,000	InKind Match							
Total Project Cost		\$ 25,758								
Grant Limit		\$ 12,879	50%							
Grant Category Totals & %			% of Project							
**	Grant Funding	\$ 12,758	49.5%							
**	Cash Match	7,000	27.2%							
**	InKind Match	6,000	23.3%							
Total Project		\$ 25,758								

Notes	
*	Enter data in yellow cells
**	Categories are automatically summed
***	Calculated total cost based on \$/ton

Some grants have funding limits

Confirm grant request is within funding limit

Tips From the Field



Mike Scanlon, City Manager

Osawatomie, KS





Where will we find the money?

"When we try to pick out anything by itself, we find it hitched to everything else in the Universe."
John Muir

AT SOME POINT YOU NEED A PLAN

1. Do It Yourself (DIY) – community, meetings, template and somebody to endorse it (City/County/School District).
2. Metropolitan Planning Organizations can help.
3. Kansas Safe Routes to School Planning and Programming grant.

[Mid-America Regional Council \(MARC\)](#)
[Lawrence-Douglas County Metropolitan Planning Organization \(LDCMPO\)](#)
[Wichita Area Metropolitan Planning Organization \(WAMPO\)](#)
[Metropolitan Topeka Planning Organization \(MTPO\)](#)
[St. Joseph Area Transportation Study Organization \(SJATSO\)](#)
[Flint Hills Metropolitan Planning Organization \(FHMPO\)](#)

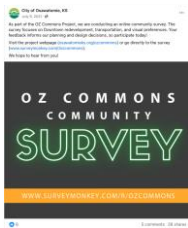


For Osawatomie it started with

1. Mile 0 on the Flint Hills trail (Community lead / Kanza Trails lead) Funding the trailhead (60% of the dollars (or about \$250,000) various private sources grants / donations). Last 40% (\$165,000) from City and County.



2. Planning Sustainable Places Grant (PSP1) from MARC 75% MARC / 25% CITY.



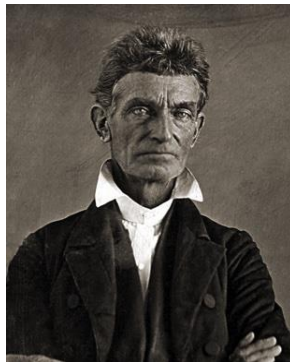


Osawatomie where American history collides.

How do we connect our trails to our history and community?

'Emotional and fulfilling': Caravan retraces Potawatomi Trail of Death through Kansas

BY LAUREN FOX - SEPTEMBER 23, 2023 5:04 PM



FREE CAMP SITES

In the Tourist Camp at Osawatomi, Kansas

Near Tourist Camp, Osawatomie, Kansas

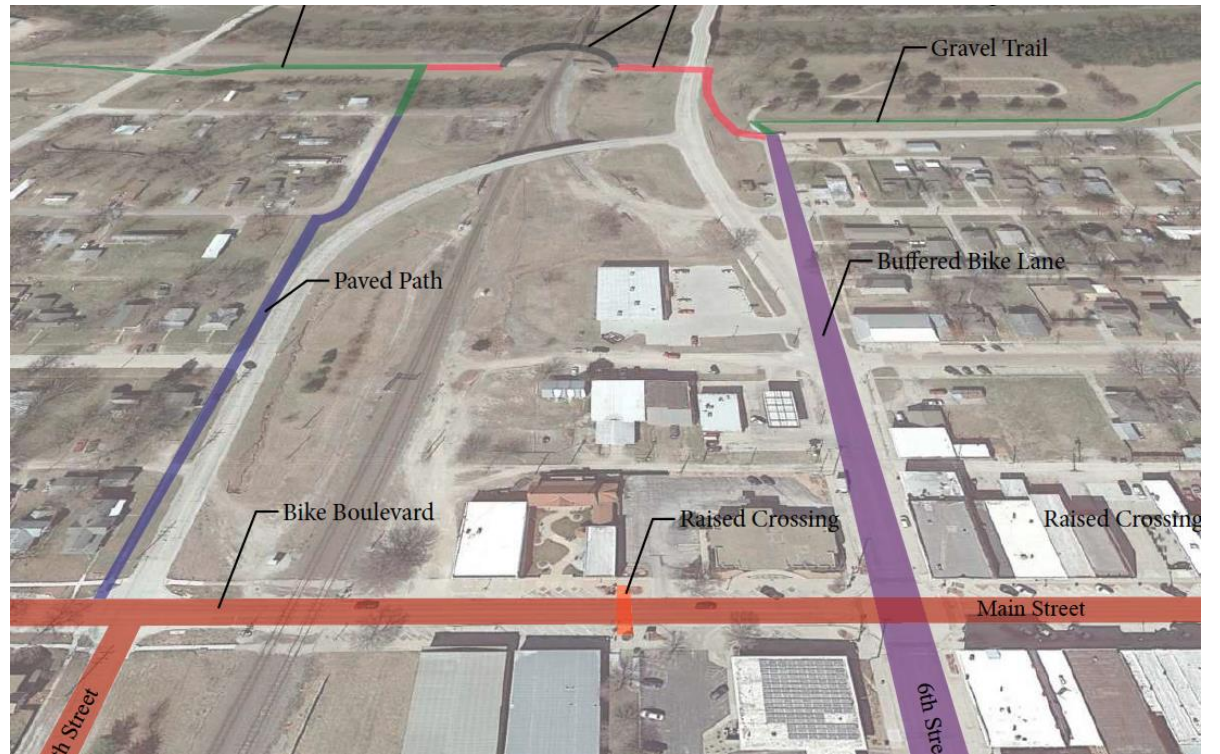
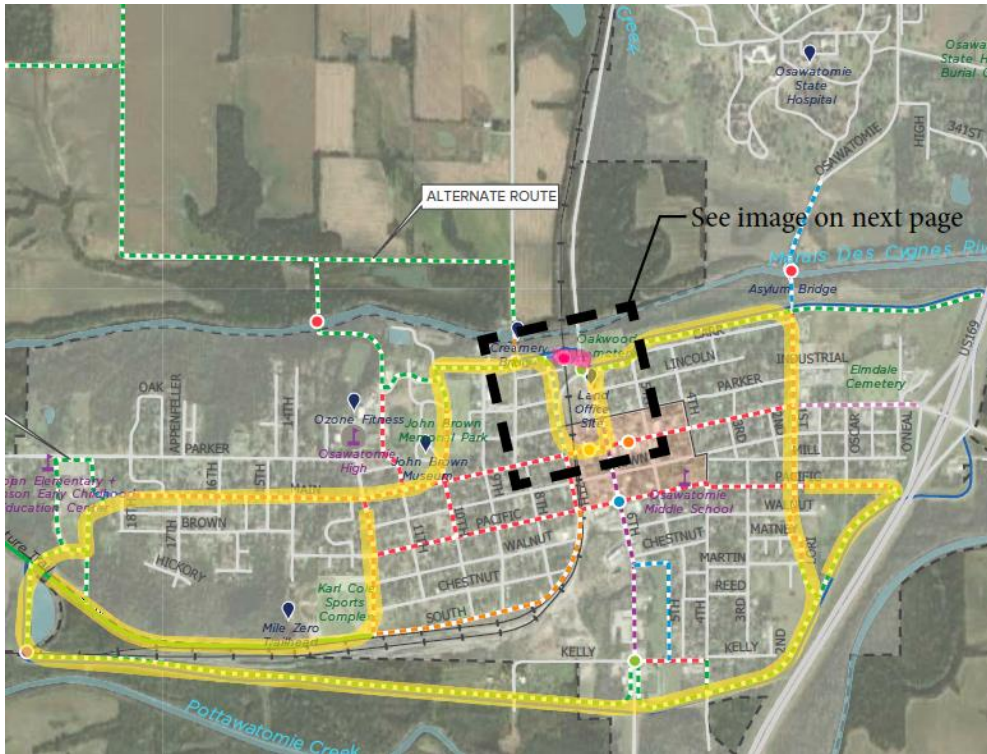
KANSAS

Osawatomie—Capacity 300 cars, electric (Pop. 2870) lights, natural gas, water, swimming pool, comfort stations, shade, free fuel, tables and benches. Next camp north 62 miles, south 32 miles.



Osawatomie
KANSAS

PSP 1 culminated in the following trail loops, corridors and connections. This is how we connected trails (bike/ped/rolling) to our community and history.





So -- Where will we find the money?



LWF

PRESS RELEASE: City Awarded \$1.5 Million from KLT Transportation Alternatives Program

Osawatomie One of 32 Awardees in 2023/2024 Fiscal Year Totalling Over \$28 Million
 POSTED ON: OCTOBER 7, 2022 - 5:26PM

Osawatomie, Kansas - The City of Osawatomie is thrilled and honored to announce that it has been awarded \$1.5 million from the Kansas Department of Transportation and the Transportation Alternatives (TA) grant program for fiscal year 2023-2024. Governor Laura Kelly announced the complete list of TA awards on Thursday, October 6th, 2022 in Manhattan, Kansas.



This competitive grant program, adminis-

Operations Office
 512 SE 25th Ave.
 Pratt, KS 67124-8174

Brad Loveless, Secretary



Phone: (620) 672-5911
 Fax: (620) 672-6020
 www.ksoutdoors.com

Laura Kelly, Governor

KANSAS DEPARTMENT OF WILDLIFE AND PARKS RECREATIONAL TRAIL PROGRAM NRT2023 LOCAL PROJECT AGREEMENT

PROJECT SPONSOR: City of Osawatomie
 PROJECT NAME: Mountain Bike Course
 PROJECT PERIOD: Date of Last Execution, to September 30, 2026
 PROJECT SCOPE: AS DETAILED IN PROJECT APPLICATION AND ATTACHED BUDGET
 TOTAL APPROVED PROJECT COST: \$66,400.00
 MAXIMUM REIMBURSEMENT TO PROJECT SPONSOR: \$53,120.00

PROJECT #: NRT2023-18



Home » News » Press Releases

DAVIDS, MIAMI COUNTY COMMUNITY CELEBRATE \$24 MILLION FEDERAL GRANT FOR FLINT HILLS TRAIL EXPANSION

October 29, 2022 | Press Release

Trail provides \$1.8 million annually in economic impact to local communities

OSAWATOMIE, KS - Today, Representative Sharice Davids joined the Kansas Department of Wildlife and Parks (KDWP) to officially announce a federal grant of \$24,821,705 has been awarded to improve and expand the Flint Hills Trail. This "Rebuilding American Infrastructure with Sustainability and Equity" (RAISE) grant will help make infrastructure improvements on 40.5 miles of the trail and open 27 new miles of the trail, from Council Grove to Herington. Davids previously sent a **letter of support** to U.S. Transportation Secretary Buttigieg advocating for the grant.



Operations Office
 512 SE 25th Ave.
 Pratt, KS 67124-8174

Brad Loveless, Secretary

Phone: (620) 672-5911
 Fax: (620) 672-6020
 www.ksoutdoors.com

Laura Kelly, Governor

KANSAS DEPARTMENT OF WILDLIFE AND PARKS RECREATIONAL TRAIL PROGRAM NRT2023 LOCAL PROJECT AGREEMENT

PROJECT SPONSOR: City of Osawatomie
 PROJECT NAME: Marais des Cygnes Pump Track
 PROJECT PERIOD: Date of Last Execution, to September 30, 2026
 PROJECT SCOPE: AS DETAILED IN PROJECT APPLICATION AND ATTACHED BUDGET
 TOTAL APPROVED PROJECT COST: \$75,000.00
 MAXIMUM REIMBURSEMENT TO PROJECT SPONSOR: \$60,000.00

PROJECT #: NRT2023-19

Tips from the Field



Nancy Nelson, Volunteer
Grant Writer and Trail Builder

Osage Cuestas Trail



“Show me the Money” **But how?**

GET ORGANIZED

- Attend a Grant Writing Seminar
- Make an Excel spreadsheet of the grant requirements and collect the pieces.
- Once you have your documentation, it really does get easier to write multiple grants

LEARN FROM OTHERS

- Attend Trail Appreciation Days, Trail Do-alogue events, and network as much as possible.
- Pay attention: who receives grant funds and where are they getting them?
- Ride or hike other trails and see who their sponsors are.

Tips from the Field



Osage Cuestas Trail

nancykdaniels@gmail.com [Switch account](#)



Your email will be recorded when you submit this form

* Indicates required question

Please enter brief description of work

Your answer

Please enter how many hours you worked

Your answer

Please list the equipment hours, if applicable and type of equipment

Your answer

Please list the fuel costs, if applicable

Your answer

Please list any other incidental expenses (rental fees etc)

Your answer

Enter month day and year *

Date

mm/dd/yyyy

K-State Research and Extension Resources



Nancy Daniels

Community Vitality Specialist



Grant Support

- [Public Trail Resources](#)
- [Grants for Trails](#)
- [Grant Writing Classes](#)



- 1 ONLINE GRANT WRITING CLASSES**
Class alum reported receiving \$42 million in successful grants. 
- 2 A PROFESSIONAL LEVEL GRANT DEVELOPMENT AND MANAGEMENT COURSE**
An 8-week course dedicated to helping you complete a fundable proposal. 
- 3 A LIST OF CONTRACT GRANT WRITERS**
Professionals willing and ready to write grants on a contract basis.
- 4 SUPPORT FOR KANSAS COMMUNITY EMPOWERMENT COMMUNITIES**
Excellent resources for those wanting to bring more to their communities.
- 5 ONE-ON-ONE SUPPORT BY K-STATE RESEARCH AND EXTENSION PROFESSIONALS**
Our professionals are prepared to help you find grants and review your grant proposals.

For more information email KSRECV@k-state.edu.

Next Time: March 12: Trail Sustainability

.

October 10	Where do we start?
November 14	Let's get started!
December 12	What will this cost?
February 13	Where will we find the money?
March 12	Trail sustainability
April 9	Rail trail issues



What is it you plan to
do with your one wild
and precious life?

Mary Oliver



Great Grant Seeking/Grant Writing Websites

Network for Good

<https://www.networkforgood.com/>

“Resources” in top bar menu, check out “Blog Posts, Webinars, Templates” in drop down menu

Free Will

<https://www.freewill.com/>

“For Nonprofits” in top bar menu, check out “Resources” or “Webinars” in drop down menu

Philanthropy News Digest

<https://philanthropynewsdigest.org/>

Go to “RFPs” in top address bar menu, right hand side

Chronicle for Philanthropy

<https://www.philanthropy.com/>

Check out “Advice” and “Opinion” in the top bar menu - Beware: the “Grants” section requires \$

Raise Funds – Raise Money, Nurture Relationships & Build Support for Nonprofit Organizations

<https://www.raise-funds.com/>

Check out “Fundraising” & “Donor Relations” in top bar menu - but tons of other good resources

35 Best Grant Writing Blogs and Websites

https://blog.feedspot.com/grant_writing_blogs/

Professional Grantwriter

<https://www.professionalgrantwriter.org/>

Check out “Blog” in top address bar, “Foundations” in drop down menu

Candid

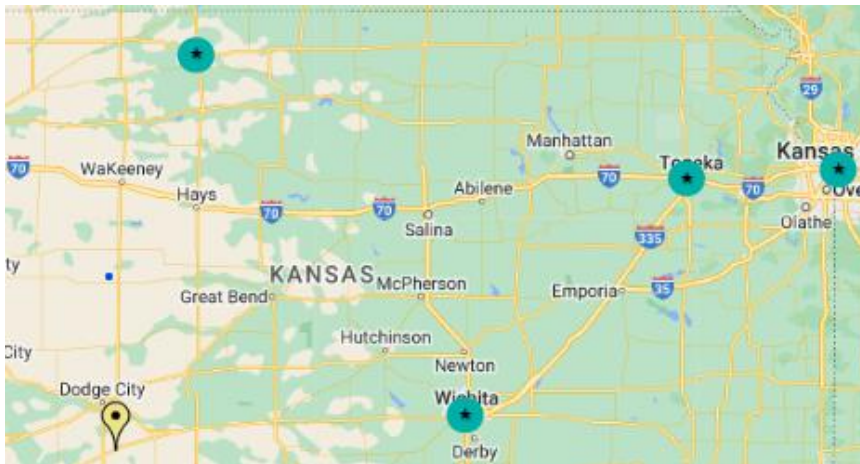
<https://candid.org/>

Get free access to Candid's Foundation Directory, the smartest, fastest way to win more funding.

Get free access to GuideStar, nonprofit research tool, the largest source of verified information on nonprofits.

Use the map search below to locate where you can access Candid's resources.

<https://candid.org/find-us>



Funding Sources For Trails Development

FUNDING SOURCE	AGENCY/ ORGANIZATION	NOTES
National-Level		
Federal Land Access Program (FLAP)	Federal Highway Administration (FHWA)	Applicant must be state, county, tribal, or city government that owns or maintains the transportation facility. Project must be located on, adjacent to, or provide direct access to federal lands. Match: 20% non-federal match required. Link: http://fh.fhwa.dot.gov/programs/flap/
NPS Challenge Cost Share Program	National Park Service (NPS), Outdoor Foundation	The Challenge Cost Share Program supports local projects that promote conservation and recreation, environmental stewardship, education, and engaging youth in the outdoors. Local project partners work with National Park Service (NPS) staff to achieve mutually beneficial outcomes. Applications are submitted by NPS staff in collaboration with project partners. Project should be completed within the fiscal year. Match: 50/50 (Cash, goods, or services from non-federal sources as match.) Link: https://www.nps.gov/ncrc/programs/ccsp/
NPS Rivers, Trails, and Conservation Assistance	National Park Service (NPS)	Technical assistance for projects demonstrating tangible conservation and recreational results in the near future. Assistance qualifies for in-kind match for many grants. Link: https://www.nps.gov/orgs/rtca/index.htm
Better Utilizing Investment to Leverage Development (BUILD)	U.S. Department of Transportation	Formerly known as TIGER. Applicant must be state, local, or tribal governments. At least 30% must be used in rural areas. Must have significant impact on nation, region, or metro area. Historically 6% of TIGER funds go to bike/ped projects. Eligible applicants are state or local governments. Applications require cost/benefit analysis. Minimum project size of \$1 million in rural areas; \$5 million in metro. Match: 20% non-federal match required, but can be less in rural areas. Link: https://www.transportation.gov/BUILDgrants/about
Non-Motorized Safety Grant	National Highway Traffic Safety	Only states with more than 15% of traffic fatalities that involve bike/ped. In west includes CA, AZ, NM, OR, UT. Link: https://www.saferoutespartnership.org/blog/primer-nhtsa%E2%80%99s-bicycle-and-pedestrian-safety-dollars
Transportation Alternatives (TAP or TA Set-Aside)	State Departments of Transportation	Federal funding administered through state DOTs via the Surface Transportation Block Grant Program in the Fixing America's Surface Transportation (FAST) Act. Eligible applicants include local governments. Provides funding for programs/ projects defined as transportation alternatives, including on- and off-road pedestrian/bicycle facilities, infrastructure projects for improving non-driver access to public transportation and enhanced mobility, community improvement activities, and environmental mitigation. Rails-to-Trails Conservancy maintains a website with detailed information: http://trade.railstotrails.org/index Match: Cash match required. Link: https://www.fhwa.dot.gov/environment/transportation_alternatives/

Funding Sources For Trails Development

FUNDING SOURCE	AGENCY/ ORGANIZATION	NOTES
National-Level		
Recreational Trails Program (RTP)	State agencies vary by state. See https://www.fhwa.dot.gov/environment/recreational_trails/rtpstate.cfm	Federal funding administered through state agencies via the Surface Transportation Block Grant Program in the Fixing America's Surface Transportation (FAST) Act. RTP provides funds to the States to support a wide variety of trail activities and related facilities, as well as environmental education and safety programs. Eligible applicants include local government and non-profit organizations. Annual cycle typically closes early in calendar year. Funding tied to federal transportation bill. Paved paths typically discouraged. Match: Varies, cash and in-kind supported. Link: https://www.fhwa.dot.gov/environment/recreational_trails/
Land and Water Conservation Fund- State Side	National Park Service (NPS) State and Local Assistance Program Division	Eligible applicants include cities, counties, or district authorized to acquire, develop, operate, and maintain park and recreation facilities. LWCF funding is federal but allocated to states to provide matching grants to help communities protect parks and recreation resources. Federal funding is in state of flux and program future is unknown. Match: 50/50 Link: https://www.nps.gov/orgs/1600/index.htm
State-Level		
Montana Fish & Wildlife Conservation Trust	Montana Fish & Wildlife Conservation Trust	Eligible applicants include non-profits and state and local government. Generally funds land acquisition and restoration projects that support hunting, fishing, and public recreation; not infrastructure development. Amount available each year varies. Annual cycle typically closes in spring. Link: http://www.mtconservationtrust.org/
Great Outdoors Colorado (GOCO)	Great Outdoors Colorado	Miscellaneous competitive grants fro outdoor recreation and conservation in Colorado, including habitat restoration, land conservation, local parks and recreation, and Connect Initiatives that work to improve trail connectivity. Funded by a portion of lottery proceeds. Match: Varies with grant. Link: http://www.goco.org/grants
Private Foundations and Opportunities		
People for Bikes Community Grants	People for Bikes	Grants focus on bicycling, active transportation, or community development, from city or county agencies or departments, and from state or federal agencies working locally. Requests must support a specific project or program; operating costs are not funded. Match: No specific % match; no grants for more than 50% budget. Link: http://www.peopleforbikes.org/pages/community-grants
American Greenways Grants	Kodak & The Conservation Fund	Non-profits eligible. Mapping, ecological assessments, surveying, conferences and design activities, public information. Link: http://www.rlch.org/funding/kodak-american-greenways-grants

Funding Sources For Trails Development

FUNDING SOURCE	AGENCY/ ORGANIZATION	NOTES
Private Foundations and Organizations		
National Trails Fund Grants	American Hiking Society / L.L. Bean	Must be a member of the Alliance of Hiking Organizations to apply. Grants are between \$500 - \$3,000 to improve hiking access or hiker safety on a particular trail. Link: https://americanhiking.org/national-trails-fund/
Doppelt Family Trail Development Fund	Rails-to-Trails Conservancy	Grants to build and improve multi-use trails. Grants range from \$5,000 to \$30,000. Link: https://www.railstotrails.org/our-work/doppelt-family-trail-development-fund/
BF Goodrich Tires Outstanding Trails Grant	BF Goodrich Tires	For sustainable and responsible off-roading clubs to help preserve local off-road trails. Link: https://garage.bfgoodrichtires.com/db/special-projects/record/outstanding-trails
NFF Matching Awards Program (MAP)	National Forest Foundation (NFF)	On-the-ground projects that enhance forest health and outdoor experiences on or near National Forests and Grasslands. Can be used to improve recreation resources like trails and bridges, and to engage youth or volunteers in stewardship work. Does not have to be on National Forest or Grassland but must benefit those lands. Match: 50/50 nonfederal cash match required. Link: https://www.nationalforests.org/grant-programs/map
REI Stewardship Grants	REI	Stewardship grants for outdoor access. Must be invited to apply by local REI store. Link: https://www.rei.com/stewardship/creating-access
Local-Level		
Businesses	<ul style="list-style-type: none"> • Corporate foundations: grants, volunteers • Small businesses or business partnerships: co-branding, events, sponsorship 	
Non-Profit Organizations	<ul style="list-style-type: none"> • Community foundations • Non-profit collaborators 	
Local Government	<ul style="list-style-type: none"> • Ballot initiative: bonds, levies • Granting programs • Tax districts, such as resort tax, tax increment finance districts (TIF), improvement districts, renewal districts 	

Tips for Finding the Money



Think Big, Start Small

- ✓ Invest in planning at many scales, from individual project master plans to community plans and policies (e.g., neighborhood plans, transportation plans, comprehensive/growth plans).
- ✓ Identify phases that could be completed individually in sequence.
- ✓ Be patient and persistent.



Be Proactive About Match

- ✓ Demonstrate your commitment by having skin in the game. Be willing to take risks.
- ✓ Be creative and think broadly about how all partners contribute to the project.



Be A Collaborator

- ✓ Find overlap in your goals and values with your partners. Know where you are aligned.
- ✓ Be reciprocal in your requests and offers of help.
- ✓ Consider stretching your project to meet the needs of partners where possible.



Start Early

- ✓ Building community will and trust with partners takes time.
- ✓ Develop internal deadlines.
- ✓ Buffer time for external processes and input, including reviews, letters of support, and partner approval.



Tell The Story

- ✓ Don't rely only on data—tell human stories.
- ✓ Explain the community impact. Share real examples about how individuals, neighborhoods, and the community will benefit.
- ✓ Use testimonials from real people.



Communicate Well

- ✓ Practice articulating the need, community impact, and your organizational effectiveness.
- ✓ Use clear, concise writing. Make use of bullets and headlines to simplify for the reader.
- ✓ Address grant criteria directly and explicitly.



Use Data & Evidence

- ✓ Demonstrate the need using data.
- ✓ Measure and monitor whether you are achieving your goals and adapt accordingly.



Anticipate Hurdles

- ✓ Honestly listen to and learn from the concerns of your community.
- ✓ Work with neighbors and other concerned parties early and often.
- ✓ Plan and budget for mitigating reasonable concerns with strategies like landscaping, fencing, signage, and amenities.
- ✓ Commit to stewardship with monitoring and maintenance.

KANSAS TRAIL RELATED RESOURCES

Kansas Trails Council (KTC) - www.kansastrailscouncil.org

Since 1974, the all-volunteer nonprofit of KTC has worked with nonprofits, state and federal agencies and cities and counties of all sizes to expand access to trails, especially natural surface trails. KTC's primary purposes include:

- develop and maintain multi-use, natural surface, public trails
- provide resources to trail developers and trail stewards
- provide information about ALL types of trails
- teach trail building methods – check out KTC's www.kansastrailscouncil.org/about/trail-building-101/
- educate trail stewards and trail users.

Trail In A Box is a single-axle, enclosed trailer which can be towed by a small pickup or SUV with a GVWR of 3000 lbs. The equipment inside includes hand tools for 25 to 30 volunteers as well as an arsenal of power equipment. There is a simple application process to use the TIAB to build or maintain public-access trails. A KTC volunteer/trail expert will provide hands-on training, including the safe operation of all equipment, as well as guide your team on best practices for building sustainable natural surface trails. KTC/TIAB provides the equipment and expertise... you provide the volunteers. There are now seven TIABs roaming the state; learn more at www.kansastrailscouncil.org/about/trail-in-a-box/

Get Outdoor Kansas - www.getoutdoorskansas.org/

[getoutdoorskansas](http://www.getoutdoorskansas.org/) is a website/app created by KTC, Sunflower Foundation and Every Green Team. Its most notable feature is an incredibly comprehensive trail mapping tool that has mapped more than 4300 miles of trails in Kansas thus far, combining the reliability of GPS with volunteers who walk every step of the trail. Make sure to check out the website and sign up to be a trail partner if your trail is not yet mapped – and also check out all the amazing trails to visit and explore. The app is available for download on Google Play or the Apple App Store – it's free and best of all, ad-free!

Every Green Team - www.everygreen.com/smart-energy/environmental-impact/green-team

The Green Team is a group of employees and retiree volunteers that take on environmental projects across Kansas and Missouri. Completing 50 to 70 projects per year, mostly on weekends and evenings, the Green Team collaborates with conservation groups, agencies and schools in enhancing and fostering an understanding of the environment as well as improving natural habitats and increasing appropriate access to important environmental areas. If your trail project is eligible, the Green Team might be able to help build trails and trail features such as bridges and look-outs.

Kansas Department of Commerce (KDC) <https://www.kansascommerce.gov/>

Kansas Department of Commerce understands that healthy communities with outdoor amenities such as trails, parks and green space are communities where businesses want to locate and people want to live. Programs to explore for potential trail and active transportation funding:

- Community Development Block Grants (CDBG).
 - CDBG funding now includes trails and sidewalks - www.kansascommerce.gov/cdbg/sidewalks-trails/
 - List of grant professionals w/CDBG experience - www.kansascommerce.gov/cdbg/find-assistance-in-your-area/
- Community Service Tax Credits www.kansascommerce.gov/program/community-programs/csp/

Kansas Department of Wildlife & Parks - ksoutdoors.com/KDWP-Info/Grants#

- Land & Water Conservation Fund Grants (LWCF) & Recreational Trails Grant (RTP)

Community Vitality at Kansas State Research & Extension (KSRE)

- Grantwriting courses www.ksre.k-state.edu/community/civic-engagement/grantwriting.html
- Kansas Community Empowerment (formerly PRIDE) kce.k-state.edu/resources/Funding.html
- What other resources and assistance are available? Reach out to KSRECV@ksu.edu

Organizations with Helpful Websites, Webinars & Research Libraries

- American Trails www.americantrails.org/
- Outdoor Industry Organization outdoorindustry.org/
- Rails to Trails www.railstotrails.org/
- Headwaters Economics headwaterseconomics.org/