

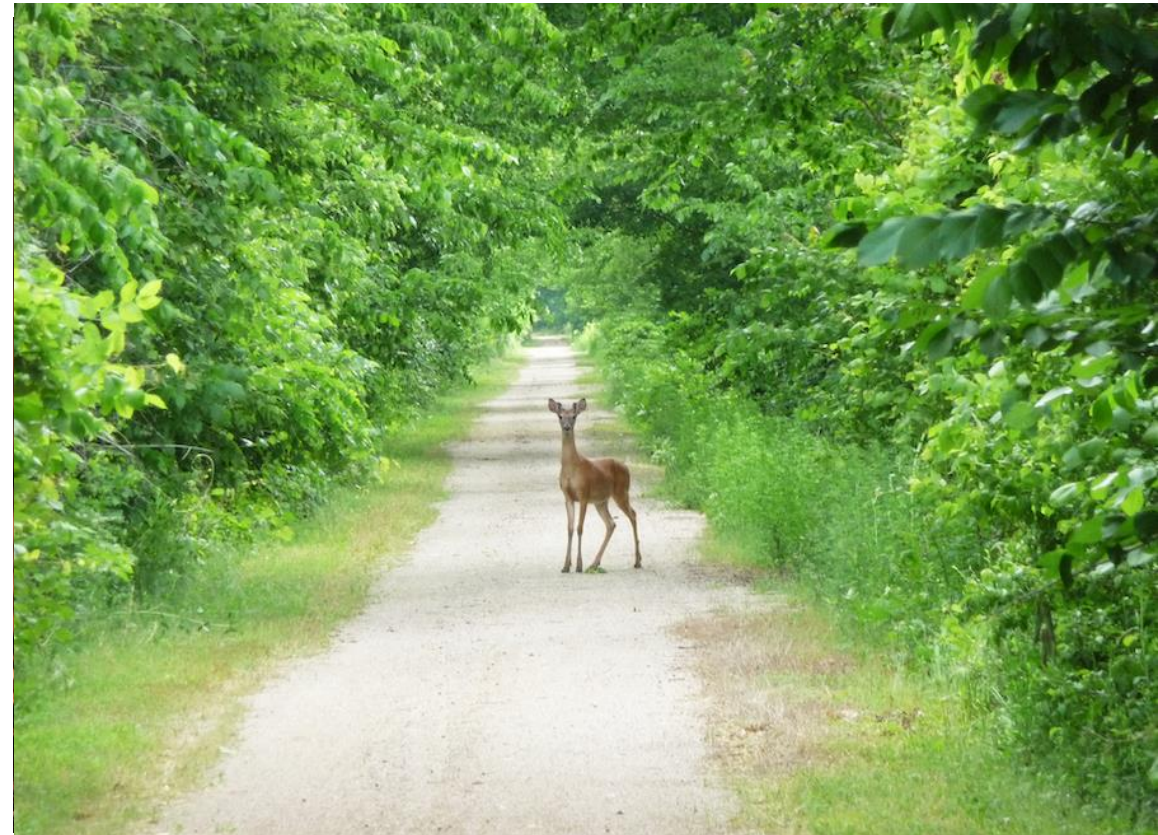


Sunflower Foundation



Rail Trail Issues

April 9, 2024



Our Speakers



Mike Goodwin

Kansas Trails Council



Trent McCown

Kansas Wildlife & Parks



Larry Hatfield

Prairie Travelers



Maureen Crist

Blue River Rail Trail



Elizabeth Weese

Iron Horse Trail

Mike Goodwin



goodwinmw@gmail.com



Introduction to Rail Trails



Rail Trail Terms

Railroad Abandonment Process

- The official process by which a railroad abandons a section of rail line.
- Abandonment is accomplished through a process administered by the Surface Transportation Board.
<https://www.stb.gov/>

Notice of Interim Trail Use (NITU)

- This is a request by the trail organization that is filed with the STB and includes a Statement of Willingness to Assume Financial Responsibility and a request to establish a Public Use Condition.
- Filing a PUC prohibits the railroad from selling any of the property or related structures for 180 days
- If no NITU or PUC has been requested within 50 days of filing for abandonment then the railroad can proceed to abandon the line and the STB no longer has jurisdiction and *railbanking is not possible*.

Rail Trail Terms



Fact Sheet

Railbanking — What, Where, Why, When and How

In 1983, concerned by the rapid contraction of America's rail network, the U.S. Congress amended the National Trails System Act to create the railbanking program. Railbanking is a method by which lines proposed for abandonment can be preserved for future rail use through interim conversion to trail use.

Railbanking can be requested by either a public agency or a qualified private organization at the time that the railroad files for

However, bridges and trestles must remain in place, and no permanent structures can be built on the right-of-way.

4. Railbanking can only be requested for a rail line that is still under the authority of the STB. The STB has authority over the corridor until the railroad files a notice of consummation, which must be filed within one year of the abandonment decision (unless the railroad requests an extension). If no

Rail Trail Resources

Railbanking

<https://kansastrails.org/railbanking/>

How To Railbank

<https://www.railstotrails.org/trail-building-toolbox/how-to-railbank/>

<https://www.railstotrails.org/resource-library/resources/railbanking-fact-sheet/>

Acquiring Rail Corridors

<https://www.railstotrails.org/resource-library/resources/acquiring-rail-corridors-a-how-to-manual/>

Rails To Trails Conservancy

<https://www.railstotrails.org/>

Surface Transportation Board (STB)

<https://www.stb.gov/proceedings-actions/filings/>

Kansas Rail Trail Organizations

- Central Kansas Conservancy: <https://centralkansastrails.org/>
- Kanza Rail Trail Conservancy: <https://www.kanzatrails.org/>
- Andover Augusta Rail Trail Initiative: <https://redbudtrail.org/>
- Prairie Travelers: <https://prairiesunsettrail.org/prairie-travelers-inc/>
- Sunflower Rail-Trails Conservancy: <https://kansastrails.org/>
- Kansas Dept of Wildlife & Parks: <https://ksoutdoors.com/State-Parks/Locations>
Prairie Spirit and Flint Hills Nature Trail

Rail Trail Scenarios

- Active Rail Line
- Limited Use – very few trains....watch for RR filing
- No usage – but not abandoned yet.....watch for RR filing
- Railroad in process of abandoning – submit NITU/PUC request
- Railbanked
- Permanently Abandoned – not railbanked – reverted to adjacent landowners

Limited or no use might look like this....



Not yet abandoned by the railroad

Railbanked or Abandoned?

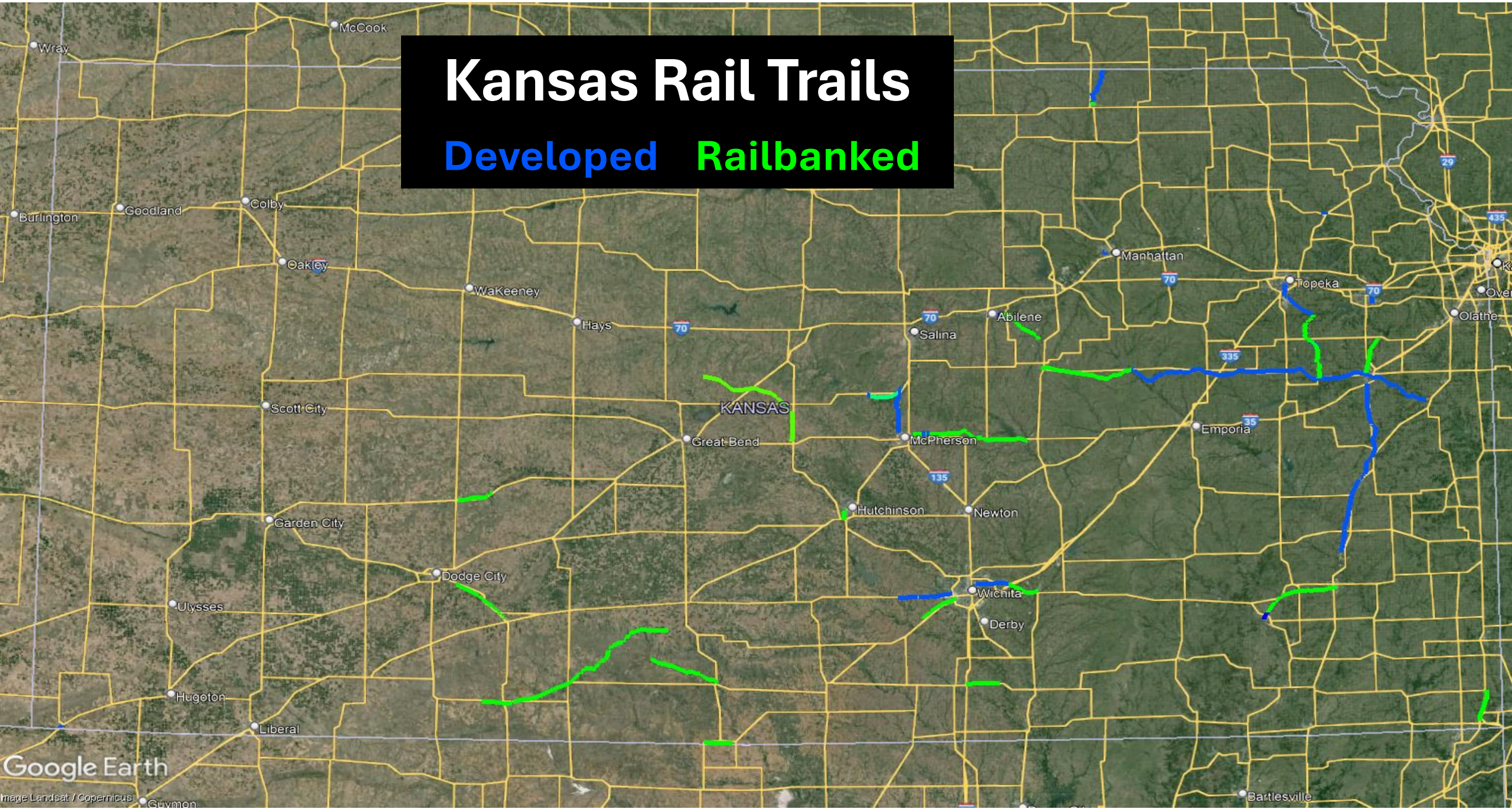


Railbanked or Abandoned?

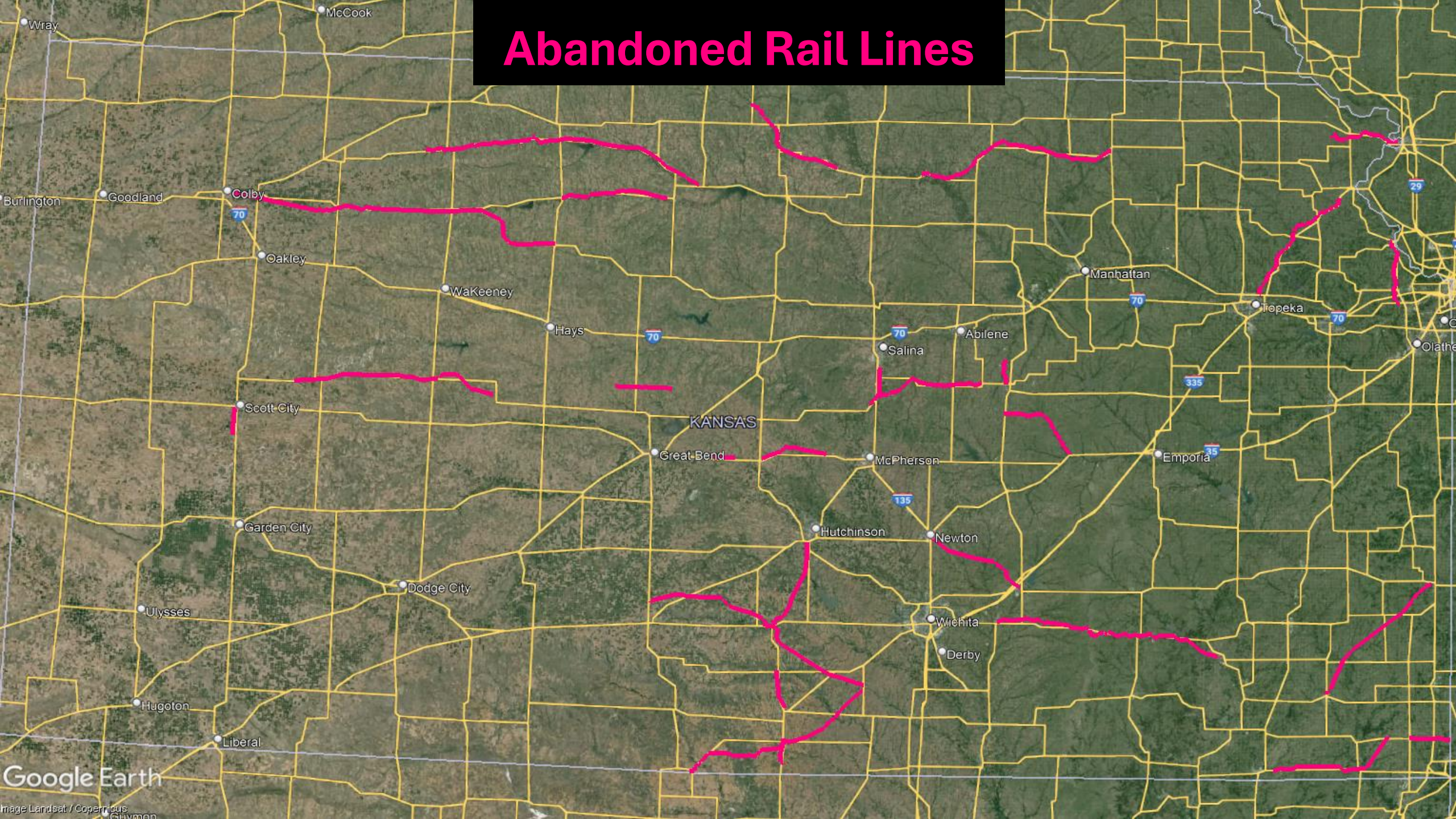


Kansas Rail Trails

Developed Railbanked



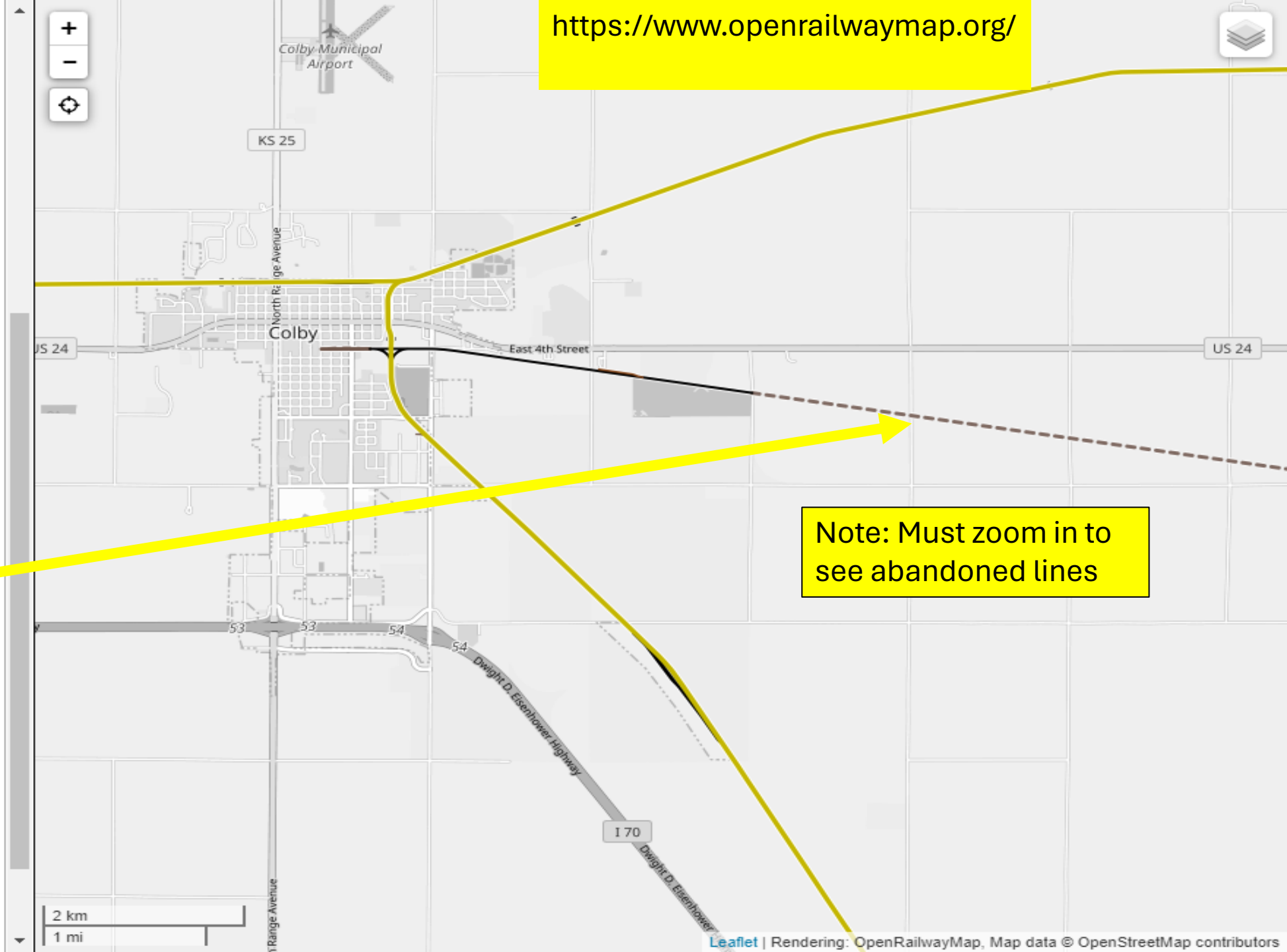
Abandoned Rail Lines



- Track type**
- Bridge
 - Tunnel
 - Line ref
 - Railroad line
 - Narrow gauge track

- Track usage**
- Siding
 - Yard track
 - Spur
 - Crossover track
 - Branch line
 - Main line
 - High-speed line
 - Industrial line
 - Industrial service track
 - Preserved track
 - Track under construction
 - Proposed track
 - Abandoned track
 - Razed track
 - Tram
 - Metro
 - Light rail
 - Milestone

- Operating Sites**
- Station
 - Yard
 - Halt
 - Junction, Crossover, Service Station, Site
 - Subway/light rail station



Note: Must zoom in to see abandoned lines



Find



Layers



Search Results



Print



Find

Reset



Address

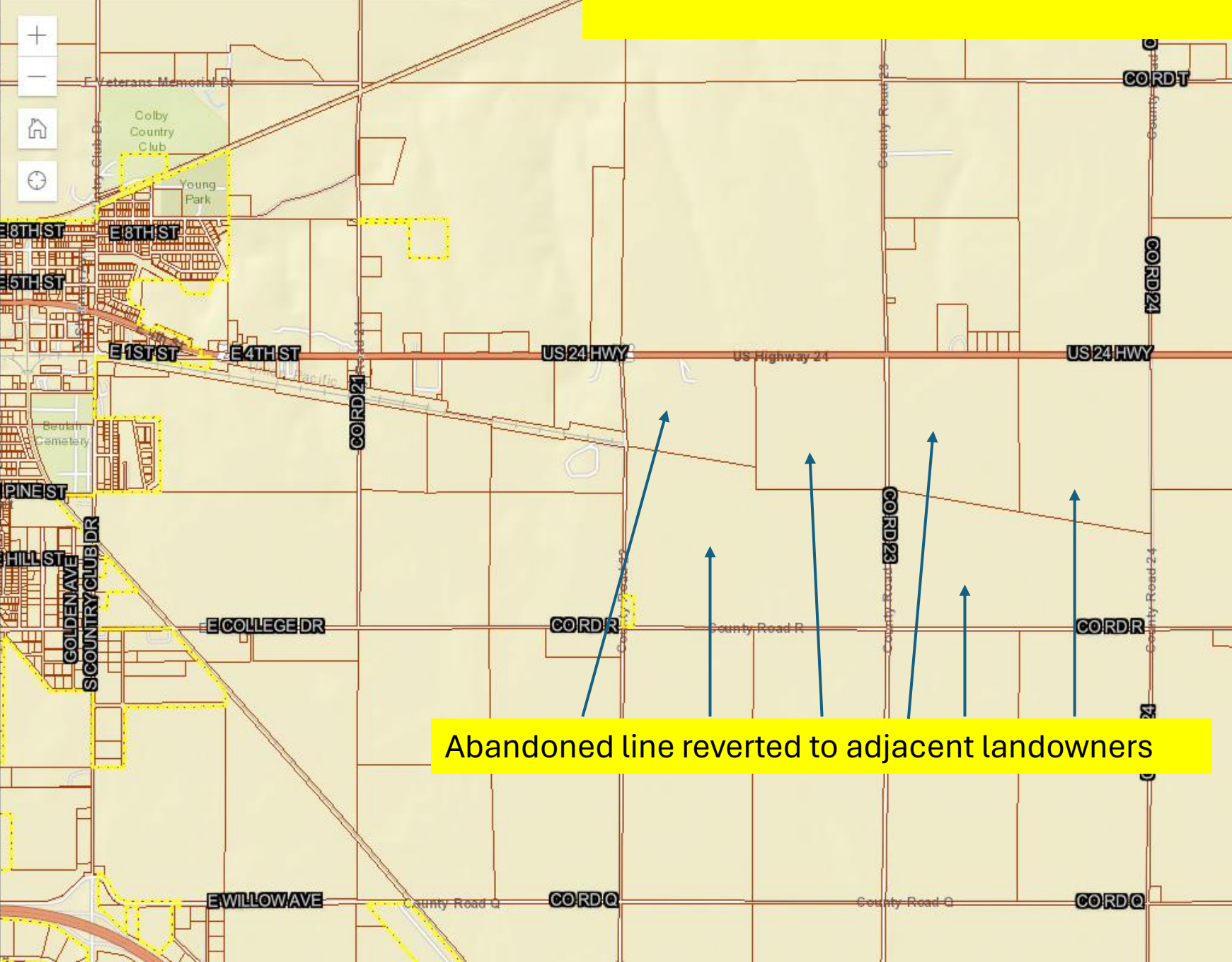
Name

Quick Ref ID

Parcel ID

Section-Township-Range

Help



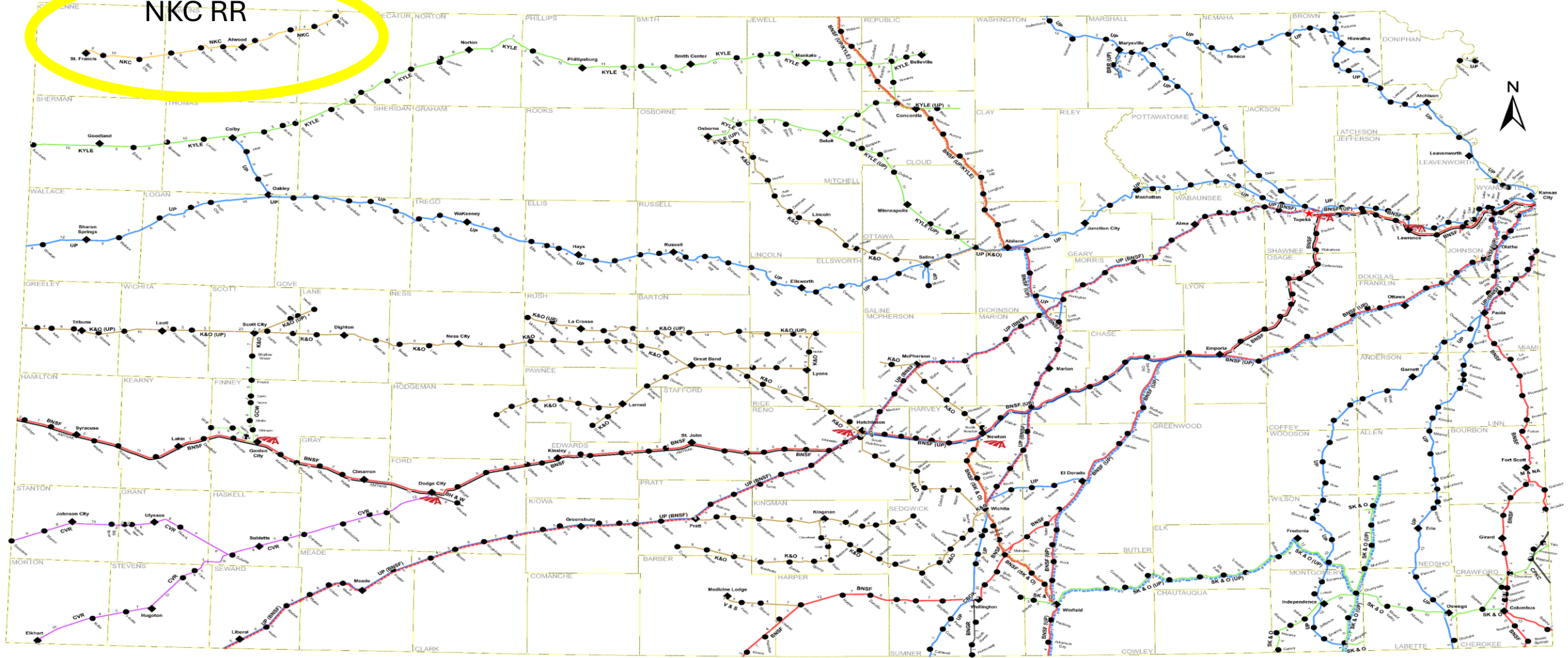
Abandoned line reverted to adjacent landowners



Thomas County ORKA



Kansas Railroad Map 2024



- ★ State Capital
- ◆ Present Day Railroad Station (County Seat)
- Present Day Railroad Station
- ✈ AMTRAK Station

- BNSF Railway 1237 miles
- Union Pacific 1535 miles
- KYLE Railroad System 277 miles
- KYLE Railroad System, Leased from UP 139 miles
- Kansas & Oklahoma Railroad 773 Miles
- Kansas & Oklahoma Railroad, UP leased 111 Miles
- Blackwell Northern Gateway Railroad 18 miles
- Blue Rapids Railroad 10 miles
- Boot Hill and Western Railway 10 miles
- Cimarron Valley Railway 179 miles
- Garden City Western Railway 45 miles
- Canadian Pacific Kansas City 18 miles
- Missouri & Northern Arkansas 8 miles
- Nebraska Kansas Colorado Railway 62 miles

- South Kansas & Oklahoma 267 miles
- V & S Railway 22 miles
- New Century AirCenter Railroad 3 miles
- Wichita Terminal Association 9 miles
- Kansas City Terminal Railway 33 miles
- AMTRAK



PREPARED BY THE
KANSAS DEPARTMENT OF TRANSPORTATION
BUREAU OF TRANSPORTATION PLANNING
MAP CREATED WEDNESDAY, FEBRUARY 28, 2024
KDOT makes no warranties, guarantees, or representations for accuracy of this information and assumes no liability for errors or omissions.



[Home](#) » [Proceedings & Actions](#) » Search STB Records

Search STB Records

This page allows you to search the records in the Surface Transportation Board's formal dockets, specifically, the filings and agency decisions. You may search for these records using the filters provided, including docket number, partial docket number, date range, and words or phrases in the records or docket title.

To see all filings and decisions for an individual docket, select "Dockets (Including Service Lists)" in the **Search For** field. This search will also give the option to generate a service list.

For help on how to use the Search tool, click [here](#). If you need additional help in locating a record, please contact the [Rail Customer and Public Assistance](#) program.

Search For: <input type="text" value="Decisions"/>	
Docket Number: <input type="text" value=""/> <input type="text" value=""/>	Docket Title: <input type="text"/>
Service Date: Start: <input type="text" value="mm/dd/yyyy"/>	End: <input type="text" value="mm/dd/yyyy"/>
Decision Type: <input type="text"/>	Decision ID: <input type="text"/>
Deciding Body: <input type="text"/>	Decision Summary: <input type="text"/>

[Document Text Search](#) ^

All of these words:

This exact phrase:



[Home](#) » [Proceedings & Actions](#) » Search STB Records

Search STB Records

This page allows you to search the records in the Surface Transportation Board's formal dockets, specifically, the filings and agency decisions. You may search for these records using the filters provided, including docket number, partial docket number, date range, and words or phrases in the records or docket title.

To see all filings and decisions for an individual docket, select "Dockets (Including Service Lists)" in the **Search For** field. This search will also give the option to generate a service list.

For help on how to use the Search tool, click [here](#). If you need additional help in locating a record, please contact the [Rail Customer and Public Assistance](#) program.

Decisions Results: 27 Decisions

[Return to Search](#)

« < 1-27 of 27 > »

Service Date	Decision ID	Docket Number	Docket Title	Decision Type	Deciding Body	Decision Summary	Attachment
8/14/2015	44562	AB_1032_0_X	NEBRASKA, KANSAS & COLORADO RAILWAY, L.L.C.-ABANDONMENT EXEMPTION-IN DECATUR, NORTON, AND PHILLIPS COUNTIES, KAN., AND HAMILTON COUNTY NEB.	Environmental Review	Director, Office Of Environmental Analysis	CONCLUDED THAT THE ENVIRONMENTAL IMPACT STATEMENT PROCESS IS UNNECESSARY AND INVITED PUBLIC COMMENT.	44562.pdf

Trent McCown



Trent.McCown@KS.gov



The trail is rail-banked, not abandoned

- In 1983, Congress amended Section 8(d) of the National Trails System Act to create a program to preserve rail corridors, through which corridors that would otherwise be abandoned, can be preserved for future rail use by converting them to interim trail use.
- Rail banking conserves an out-of-service rail corridor under the National Trails System Act.
- In the event of a national emergency or economic necessity, service can be restored within the railroad corridor
- During the interim, the corridor can be used as a recreational corridor.



-
- **KS- Duties of Responsible Party (K.S.A 58-3212)**
 - *PARTIAL LISTING- See Statute for detailed list, and legal counsel for interpretation.*
 - Provide for safety of existing easements, as well as signage, litter control, and law enforcement.
 - Grant easements for crossings and designate corridor for non-motorized use.
 - Maintain corridor, which includes fencing, culverts, and bridges, as well as other obligations.
 - Reduce fire hazard.
 - Provide for noxious weed control.



- LEGEND**
- = BRIDGE AND CULVERT REPLACEMENTS (24)
 - = BRIDGE RENOVATIONS (57)
 - = MINOR MODIFICATIONS (383)
 - ▲ = HIGHWAY CROSSINGS (9)
 - ▲ = PAVED COUNTY ROAD CROSSINGS (21)
 - ▲ = GRAVEL COUNTY ROAD CROSSINGS (80)

Control Access



Gates

Galvanized gates.

Break-away sheer pin for padlocks.

Swing in either direction.

Ant-theft hardware on Signs.



Highway Crossings & Safety Signs



Maintenance:

Routine Work:

Mowing

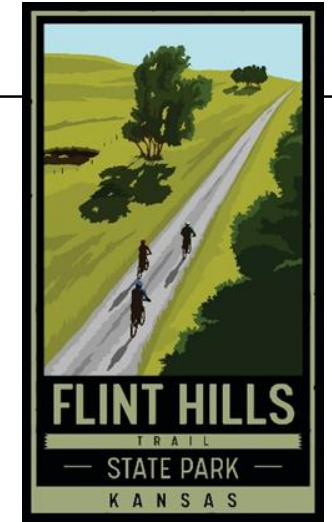
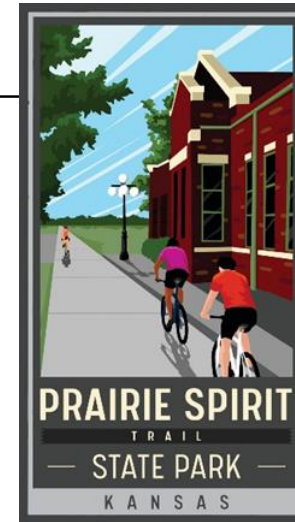
Spraying Trail Surface

Spraying Noxious Weeds

Trimming Trees

Storm Cleanup

Patrol



Semi- Routine Work

Cracks

Fencing and Repairs

Signs

Bank Stabilization

Drainage Repairs

Burning

Vandalism

Bridges

Flooding and Other Disasters



Maintenance: Routine work

Spraying Trail Surface

done for maintenance

Noxious Weeds- Spray/Cut



Maintenance: Routine work

Storm Cleanup



Maintenance: Semi-Routine work

Drainage repairs

Concrete boxes, culvert pipes, ditches,
erosion protection



Maintenance: Semi-Routine work

Fencing and Repairs

clearing and fencing



Maintenance: Vandalism and Encroachment

Vandalism



Larry Hatfield



lhatfield6@gmail.com















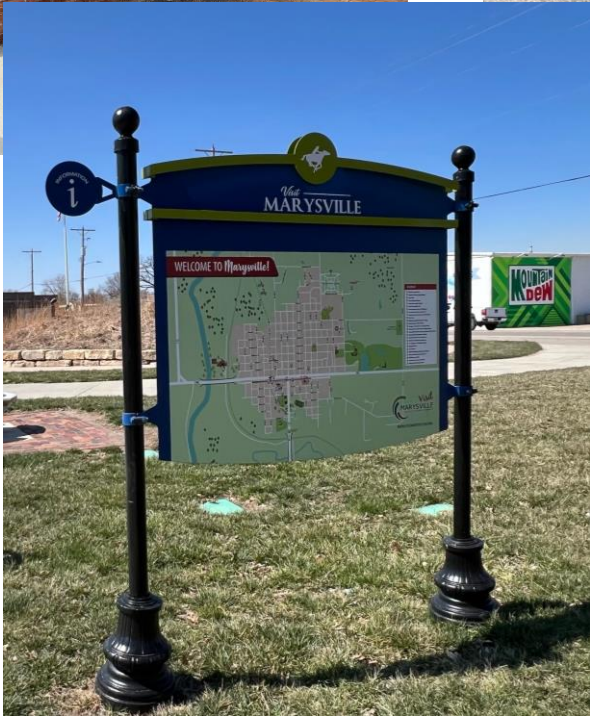
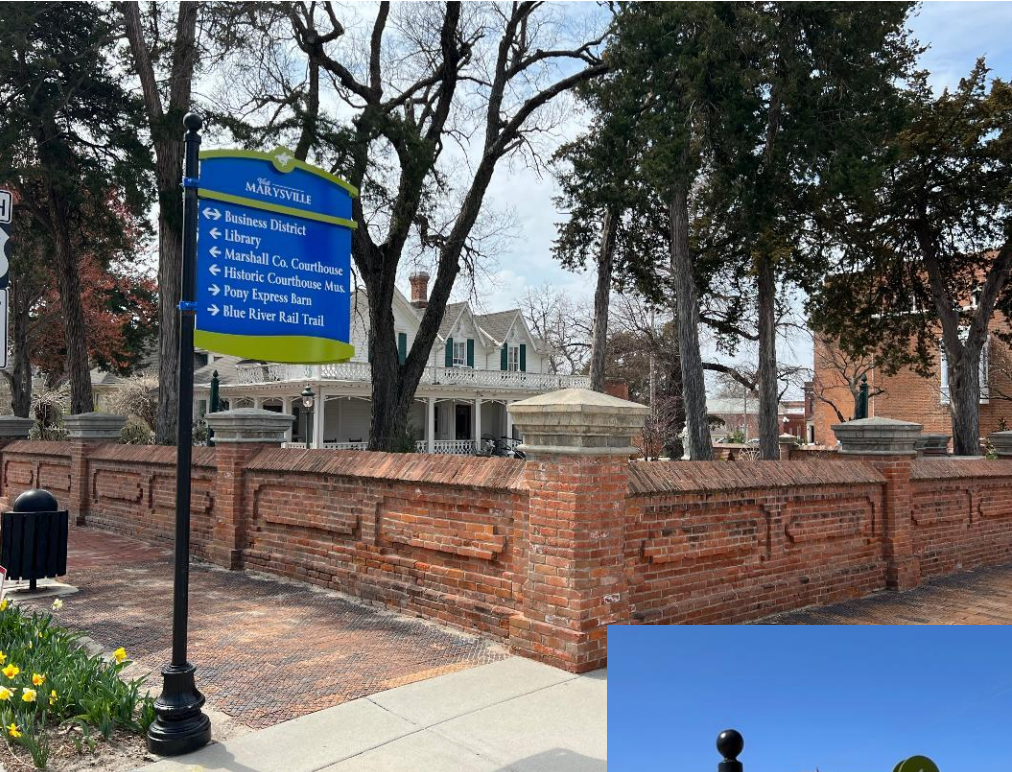
Maureen Crist



mdvc@aol.com



Collaborating with Convention & Tourism





Creating A Trail Town Culture



Extend An Invitation

- Brochures
- Expos
- Google maps
- Google listing

- Trallink
- Instagram
- Facebook
- Website

Is It Worth It?

Trail Amenities



Stop by the trailhead Downtown at 7th & Broadway. Restrooms, water and bike racks are available!

Bike trouble? Use our fix-it station north of Jayhawk Road.

We have clean restrooms, water, and a shady spot at Hull Road.

Mileage Calculator

The Blue River Rail Trail extends 13 miles from Downtown Marysville north to the Nebraska state line where it connects to the Chief Standing Bear Trail and the extensive Nebraska Trails System.

Blue River Rail Trail	MARYSVILLE, KS	Jayhawk Rd Trailhead	Harvest Rd	Frontier Rd Trailhead - "Hub"	Deer Trail Rd - Marietta, KS	Oketo, KS	Kansas/Nebraska State Line	Barnston, NE Trailhead	Blue Springs, NE Trailhead	Urbancville, NE Trailhead	Beatrice, NE Trailhead	Pickrell, NE	Cortland, NE	Princeton, NE	SOUTH LINCOLN, NE
Marysville - Pony Express Plaza	0	1.3	3.3	6.2	7.7	9.9	12.7	16	24	26	36.5	46	54	58	68.5
Jayhawk Rd Trailhead	1.3	0	2	4.9	6.4	8.6	11.4	14.7	22.7	27.7	35.2	43.7	52.7	57.7	64.2
Harvest Rd	3.3	2	0	2.9	4.4	6.6	9.4	12.7	20.7	23.1	33.2	41.7	50.7	55.7	62.2
Frontier Rd Trailhead - "Hub"	6.2	4.9	2.9	0	1.5	3.7	6.5	9.9	17.8	22.8	30.3	38.8	47.8	52.8	59.3
Deer Trail Rd - Marietta, KS	7.7	6.4	4.4	1.5	0	2.3	5	7	18.3	21.3	28.8	37.3	46.3	51.3	58
Oketo, KS	9.9	8.6	6.6	3.7	2.2	0	2.8	6.1	14.1	18.1	26.6	35.1	44.1	49.1	55.6
Kansas/Nebraska State Line	12.7	11.4	9.4	6.5	5	2.8	0	3.3	11.3	15.3	23.8	32.3	41.3	46.3	52.8
Barnston, NE Trailhead	16	14.7	12.7	9.8	7	6.1	3.3	0	8	13	21.3	29.8	38.8	43.8	49.3
Blue Springs, NE Trailhead	24	22.7	20.7	17.8	14.3	11.3	8	0	5	10.3	18.8	27.3	36.3	41.3	47.8
Urbancville, NE Trailhead	26	24.7	22.7	19.8	16.3	13.3	10	0	7.3	12.3	20.8	29.3	38.3	43.3	49.8
Beatrice, NE Trailhead	36.5	35.2	33.2	30.3	26.8	23.8	20.8	12.5	7.5	0	8.5	17.5	26.5	31.5	38
Pickrell, NE	46	43.7	41.7	38.8	35.3	32.3	29.3	21	16	8.5	0	9	14	20.7	23.5
Cortland, NE	54	52.7	50.7	47.8	44.3	41.3	38	30	25	17.5	0	0	5	11.7	14.5
Princeton, NE	58	57.7	55.7	52.8	51.3	49.3	46.3	43	35	25	14	5	0	6.7	9.5
Roca, NE	68.5	67.2	65.2	62.3	60.8	58.8	55.8	52.3	44.5	38.5	32	23.3	14.5	9.5	2.8
SOUTH LINCOLN, NE	68.5	67.2	65.2	62.3	60.8	58.8	55.8	52.3	44.5	38.5	32	23.3	14.5	9.5	2.8

Travel to Marysville, KS:

- South from Lincoln, NE: 75 miles
- North from Manhattan, KS: 60 miles
- West from St. Joseph, MO: 100 miles
- East from Denver, CO: 450 miles

- Visit Marysville
- Bike Friendly Downtown
 - Delicious Dining
 - Comfy Accommodations
 - Pony Express Home Station
 - Black Squirrels on Parade
 - Alcove Spring Historic Park
 - Koester House Museum & Gardens

Plan your visit at visitmaryvilleks.org/

www.blueriverrailtrail.org
info@blueriverrailtrail.org

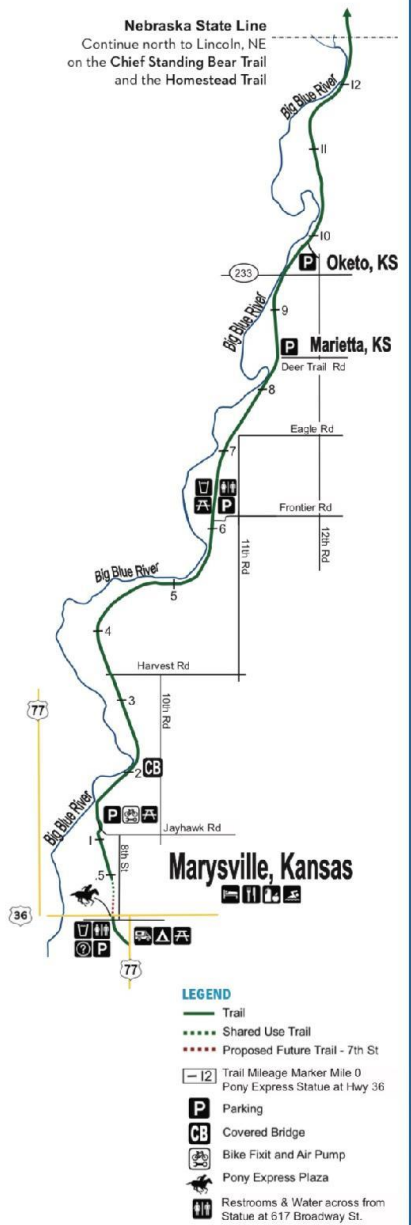
[blueriverrailtrail](https://www.facebook.com/blueriverrailtrail) [blueriverrailtrail](https://www.instagram.com/blueriverrailtrail)



Experience beauty, wildlife and more on the Blue River Rail Trail!

Blue River Rail Trail Trail Map

Marysville, KS



Travel from Lincoln, Nebraska to Marysville, Kansas





Collaborating with the Pony Express Gravel Dash

- Promoting their event and our trail at expos in numerous states.
- Including events for kids and riders of all levels.



Blue River  trail
Marysville, Kansas



- Visit Marysville
- Bike Friendly Downtown
 - Delicious Dining
 - Comfy Accommodations
 - Pony Express Home Station
 - Black Squirrels on Parade
 - Koester House Museum & Gardens
 - Alcove Spring Historic Park
- Learn more at www.blueriverrailtrail.org

My TrailLink Explore Trails About Us Get Involved

Find Trails > Kansas > Blue River Rail Trail

Blue River Rail Trail

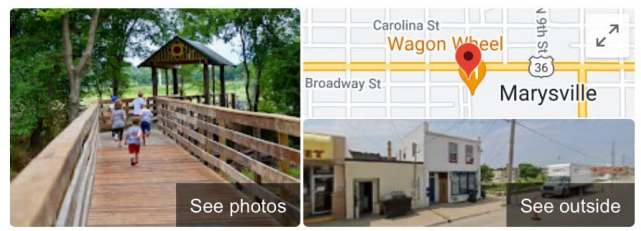
Kansas

[View Trail Map](#)

19 Reviews

[View Trail Map](#) [Print](#) [Complete](#) [Share](#) [Favorite](#)

TrailLink Trail Maps and Guides 4.7 (4.7)



Blue River Rail Trail

4.7 ★★★★★ 23 Google reviews

Hiking area in Marysville, Kansas

[Website](#) [Directions](#) [Save](#)

Address: 700 Broadway St, Marysville, KS 66508

Hours: Open 24 hours

[Suggest an edit](#) · Own this business? Success! Your edit is live.

[Add missing information](#)
[Add place's phone number](#)

Popular Times

MON TUE WED THU FRI SAT SUN

Blue River Rail Trail

Easy · ★ 4.5 (42)

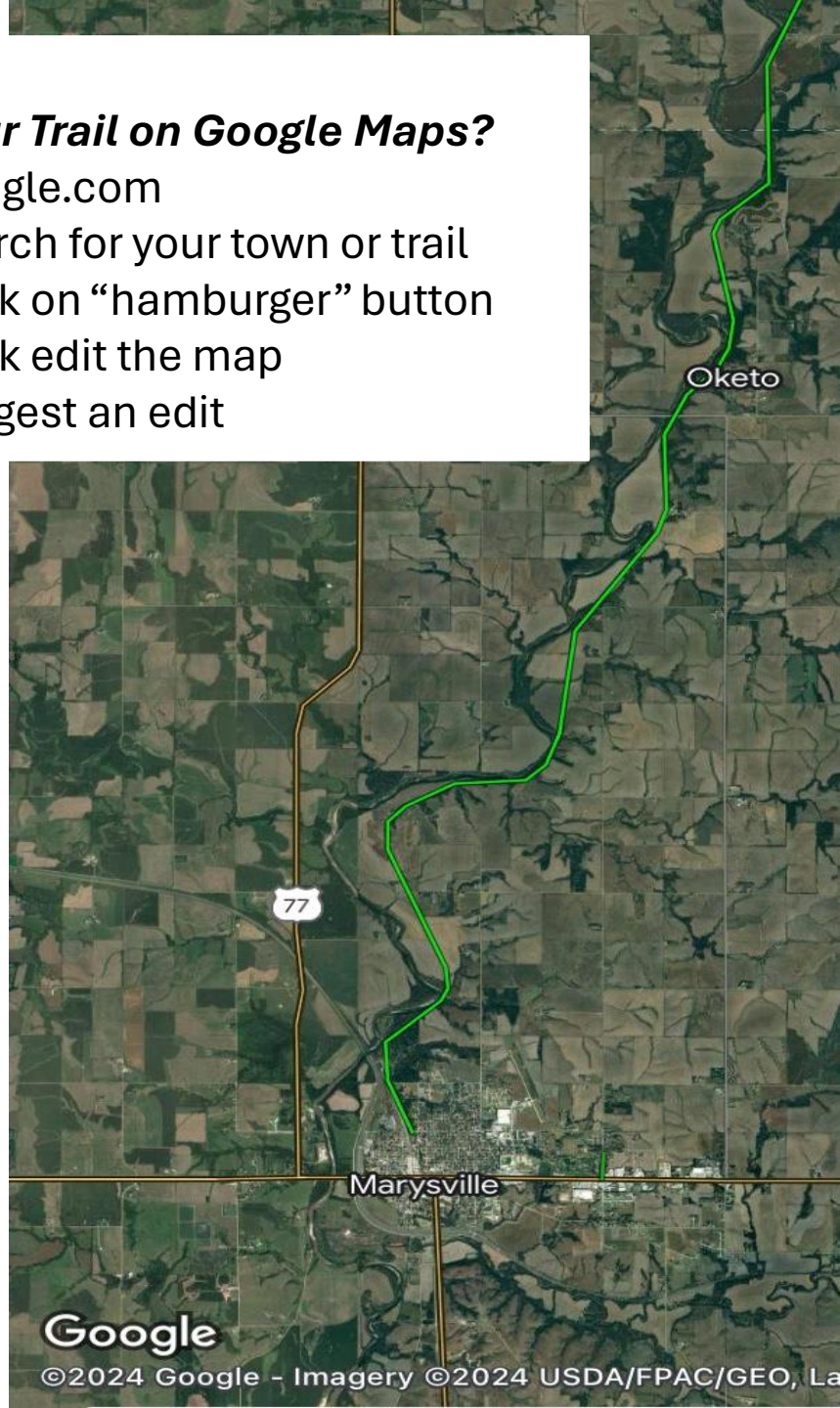
Marysville, Kansas

[Photos \(102\)](#) [Directions](#) [Print/PDF map](#) [Share](#)

Length **131 mi** Elevation gain **177 ft** Route type **Point to point**

Check out this 131-mile point-to-point trail near Marysville, Kansas. Generally considered an easy route, it takes an average of 3 h 52 min to complete. This trail is great for birding, road biking, and running, and it's unlikely you'll encounter many other people while exploring. The best times to visit this trail are March † [Show more](#)

- ### Is Your Trail on Google Maps?
- 1-Google.com
 - 2-Search for your town or trail
 - 3-Click on "hamburger" button
 - 4-Click edit the map
 - 5-Suggest an edit



Maintaining a Quality Trail

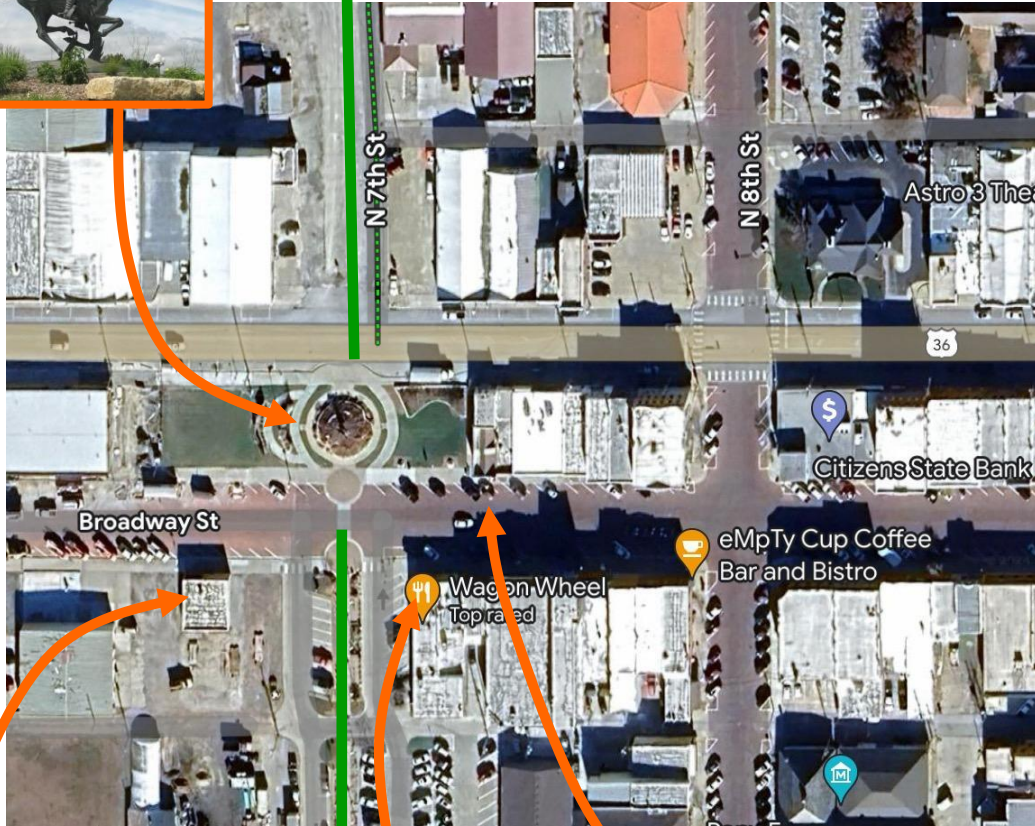


***Bicycle Playground
Coming Summer 2024!***



***Future Plans
Include A Trail
Themed Mural
Along The Trail***

It's Working!



Trailhead with Restrooms Water & Information

Wagon Wheel Restaurant

Backroads Bicycle Shop

Blue River Rail Trail
May 27, 2023 · 🌐



Backroads Bicycle · Follow

May 27, 2023 · 🌐

Group of 8 riders from Colorado stopped by this morning, they're riding the Blue River Rail Trail from here to Beatrice today & on to Lincoln tomorrow. The Blue River Rail Trail continues to bring more & more people to our community each year as riders seek out rail trails all over the country. They enjoyed the Trailhead Suites, restaurants and of course had to find some Black Squirrels!



Black Squirrel Cycling League · Join

Sean Spoons · Jul 2, 2023 · 🌐

I am new to the area and was able to ride on the Blue River Rail trail. I am excited to be near this trail. Today's ride was 35 miles starting in Marysville.



Elizabeth Weese

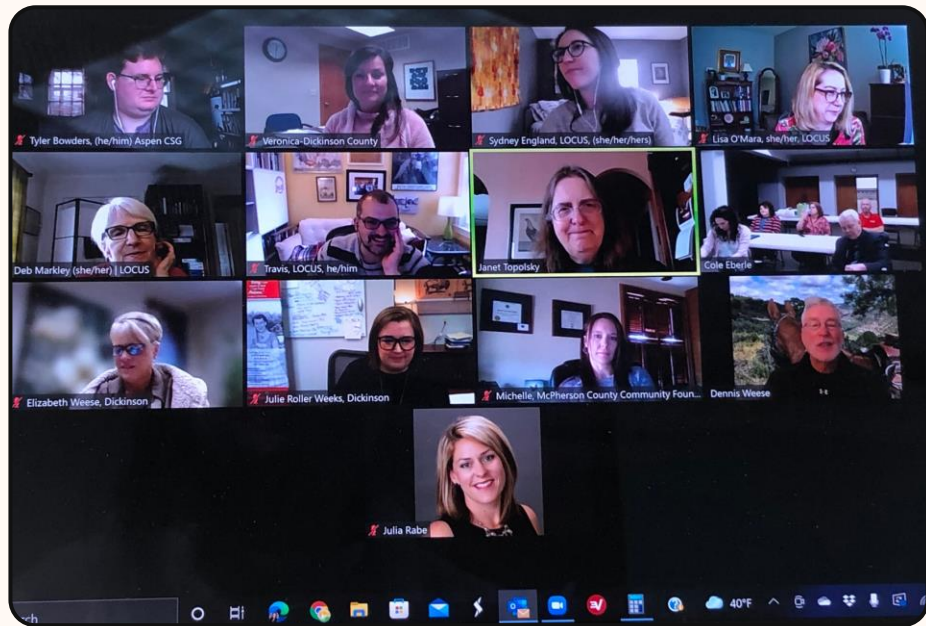


elizabeth@communityfoundation.us





MEET THE TEAM!







COMMUNITY MEETING

About the Iron Horse Trail and opportunities
for a healthier community.



MAY 5th, 7 pm

ABILENE HIGH SCHOOL AUDITORIUM
1300 N CEDAR, ABILENE, KS.





IRON HORSE



ENJOY THE BEAUTY OF NATURE

















Iron Horse Trail earns \$50k for second phase



Ed Boice • Reflector-Chronicle
Members of Blue Cross and Blue Shield, the Abilene and Smoky Valley Railroad, Quality of Life Coalition and other community members stand in front of the Iron Horse Trail in celebration of the railroad receiving \$50,000 Tuesday morning. The money came from the Blue Cross and Blue Shield Pathways grant. The money will go toward the completion of the second phase of the trail's construction, which covers from Jeep Road to the Smoky Hill River.

