

# Newsletter



## Join KAE4HA Today

It is the time of year to join or renew membership in the Kansas Association of Extension 4-H Agents. Anyone with any percentage of time devoted to 4-H and youth programs can benefit from membership in KAE4-HA. Check out [https://www.geary.k-state.edu/4-h/kae4ha\\_membership.html](https://www.geary.k-state.edu/4-h/kae4ha_membership.html) for step-by-step instructions and further details. Payment can be made via check or PayPal. All of those who have filled out their membership form (via Qualtrics) and payment is received by November 1st will be included in a drawing for a free full membership and a free membership for a new member. These will be announced via Facebook and winners will also be notified individually. Dues will increase to \$125 after December 1, 2023. If you want to know more about the association, visit [https://www.ksre.k-state.edu/agent\\_association/4-h-agents/index.html](https://www.ksre.k-state.edu/agent_association/4-h-agents/index.html). Join us and become part of a team that is committed to making a difference in the lives of youth!

## Benefits of being a member

- Advance the professional status of Extension staff.
- Encourage professional improvement.
- Exchange ideas, methods, and techniques.
- Strengthen communications with Extension administration.
- Provide inspirational climate for all its members.
- Foster team work among all Extension personnel.
- National Conference discounts and option for awards.

# ***BE A PART OF A COMMITTEE***

**Committees are the lifeblood of the Association and the teams carry out the work important to our mission. Each member is encouraged to be engaged in at least one committee and more if they wish. Here is a brief description of each Committee for a complete list of responsibilities see the KAE4HA Handbook.**

## **4-H Day with the Wildcat Women**

1. Be responsible for all planning , promotion and conducting of the 4-H Day with the Wildcat Women basketball game.
2. Coordinate receiving of income and paying expenses with KAE4HA treasurer.
3. Recommend how proceeds from the event will be utilized by KAE4HA

## **Professional Development**

1. Keep membership aware of professional improvement opportunities, including study tours, summer school, exchange programs, scholarships, etc.
2. Take leadership in providing strong professional improvement programs for the Association members.
3. Work with Annual Conference Planning Committee to ensure development of strong professional improvement opportunities at the conference.
4. Encourage membership to subscribe to, submit articles to and utilize information from the Journal of Extension and Journal of Youth Development.

## **Policy and Resolution**

1. Serve as a study and research committee to the Association Executive Committee on all major policy decisions and thrusts of KAE4HA.
2. Solicit, receive and review resolutions from membership. Develop and present resolutions to the Executive Committee for further action.
3. Review By-Laws and operational policy annually and revise bi-annually.
4. Undertake Specific responsibilities as designated by the President.

## **Diversity**

1. Encourage members to become more aware and sensitive of clientele's needs.
2. Provide leadership for membership to incorporate diversity in programs
3. Further education of diversity to membership through newsletter and activities.

## **Programs**

1. This committee has the responsibility of the Association social activities, including Clover Night at Annual Conference and State's Night out at NAE4HYDP conference.
2. Takes the leadership in organizing State Delegation for NAE4HYDP conference. Works with Recognition committee in honoring delegates including corsages, cards, etc.

## **Member Recognition**

1. Solicit nominations for Distinguished Service Award (DSA), Achievement in Service Award (ASA) , Meritorious Service Award (MSA), team awards, other National awards and any other appropriate professional awards.
2. Organize, facilitate, select and recognize the Communications Awards division for the Association .
3. In coordination with the president recognize outgoing officers

## **Research and Evaluation**

Serve as the study and research committee for KAE4-HA on all major research and evaluation decisions and priorities of NAE4HYDP.



Bring your throwing arm to  
Clover Night!



Axe To Grind



1220 Moro Street

6-8 pm, October 25th

\$30/ person, bring cash or check made out  
to KAE4-HA

Some snacks will be provided

A variety of drinks are available for purchase

Closed toe shoes are required

RSVP here:

[https://kstate.qualtrics.com/jfe/form/SV\\_23  
OTIkQ7UbJj9MG](https://kstate.qualtrics.com/jfe/form/SV_23OTIkQ7UbJj9MG)

You must complete a waiver before arriving:

<https://www.axetogrind.us/>



## TIPS TO ATTEND ANNUAL CONFERENCE



We are excited to see everyone at Annual Conference this year!

Don't forget to register by October 1st for the conference and for Clover Night at Axe to Grind .

Below are a handful of highlights and tips for Annual Conference.

- Attend the First Timer's Orientation Tuesday Morning. The New Agent Coaching Team will be there ready to help you understand the conference more and the do's and don'ts.
- The State Benefits Update is a comprehensive overview of the health plans for the next year. It is the perfect time to ask questions.
- Attend your agent's association meeting on Tuesday or multiple if you have dual appointments. The Kansas Association of Extension 4-H Agents will be meeting at 1:15 pm in the Flint Hills Room. Sit by someone you might not know, ask questions during, and join a committee! Being active in your association is the best way to make connections with other agents across the state.
  - Epsilon Sigma Phi – is open to all agents (no matter your discipline)
  - Kansas-Joint Council of Extension Professionals – when you join an agent association you will be a part of this. You are more than welcome to attend the lunch meeting on Wednesday (even if you didn't register for it, grab a lunch from the Union and come!)
- Tuesday evening will be the social for all staff. Awards will be presented and good conversation will be had! Plus, it is at the Bill!
- Wednesday is when the conference-y items happen. General sessions and breakout sessions will be going on. Along with opportunities to connect with other agents.
  - This can be confusing if you have never been to the union. Use Spaces for maps to help you find your way around.
- Wednesday evening agent associations will meet up for a fun evening! See our Clover Night flyer in the newsletter for the link to rsvp for the 4-H Social. Bring a check or cash to pay at the door.
- Thursday we will close the conference with Program Focus Teams (PFT) meetings.
  - If you have multiple areas of interest, this is the perfect time to shop around and visit many PFTs. If you are a 4-H agent, we will see you at the Youth Development PFT meeting in the Bluemont room, we have a lot of fun! 😊
- Most importantly some Dos for Annual Conference:
  - Connect with another agent you don't know.
  - Attend your agent association meeting.
  - Attend your agent social night on Wednesday.
  - Dress business casual. (there is a fair amount of walking to the union, up steps, across the building, etc. make sure to think about your shoes.)
  - Be curious and ask questions.
  - Wear your name tag.
  - Soak up all the learning.
  - Make sure your area director sees you are present!
  - Have fun!





## Other Kansas Hall of Fame Recipients

J Harold Johnson 2007  
Merle Eyestone 2008  
Capper Authur 1951  
Otis Hall 2004  
Glenn M. Busset 2005  
Maynard Coe 2006  
Cecil Eyestone 2008  
Lois A Redman 2009  
Marcia McFarland 2010  
Bill Riley 2011  
Steven Fisher 2013  
Marilyn Pence Galle 2014  
Lindy Linquist 2015  
Ann L Domsch 2016  
James D Bassett 2017

On October 9, Trisha Cash will be inducted into the National 4-H Hall of Fame at the Grand Wyndham in Pittsburgh, PA. She will be one of 13 laureates inducted in the 2023 ceremony. Known for her creative and engaging personality, Trisha dedicated 39 years to the Kansas 4-H Foundation. She provided exemplary service to all aspects of Kansas 4-H Youth Development: Foundation, Extension, 4-H youth, families, partners, and donors. Emerald Circle Banquet attendees cannot forget the 25 years of outstanding decorations for honoring the State Winners. In additions to the countless hours spent preparing for the annual Friends of 4-H Day held at Rock Springs Ranch.

The National 4-H Hall of Fame began in 2002, when the National Association of Extension 4-H Agents, National 4-H Council and 4-H Headquarters partnered to create this recognition opportunity during 4-H's centennial year. The National 4-H Hall of Fame recognizes 4-H volunteers, financial supporters, staff, and pioneers who have made major contributions within the 4-H movement at the local, state, national and international levels.

Each land-grant university from across the nation may nominate one candidate per year, while the founding partners of the Hall of Fame may nominate up to three candidates. These candidates represent 4-H in the broadest sense – candidates may have been a 4-H volunteer, financial supporter, Extension professional or staff employee who impacted 4-H through his or her contributions of time, energy, or financial resources. The National 4-H Hall of Fame during its past 21 years, has honored 481 4-H supporters and contributors. Kansas currently has 18 laureates among the National 4-H Hall of Fame.



More 4-H Stories from the Heart presents inspirational and heartfelt stories by 4-H'ers, volunteers, and staff that will inspire, amuse, and bring back fond memories. Paperback copy \$24.95. Proceeds will be used to support advancing the mission of NAE4-HYDP. You can buy your copy at <https://www.nae4hydp.org/>

# Take the Time and Be Involved! ~Submitted by Dr Sarah Maass

We all get bogged down in the hustle and bustle of our day-to-day activities and sometimes we forget about investing in ourselves as professionals. It is important for us to evaluate what skills we want to further develop. One professional development opportunity to help develop those skills includes becoming involved in an Extension Professional Association. While our associations revolve primarily around program areas, they allow for the opportunity to network with others not only within our state, but nationwide. The Alpha Rho Chapter of Epsilon Sigma Phi is another great way to become involved in an association which has members from all Extension program areas, including administration. I encourage you to consider joining a professional organization.

When joining, I ask that you think about this quote: No Deposit. No Return. The more you invest in yourself and the organization, the more you will get out of it. It is worth the time. You are worth the time!

Here are a few Professional Acronyms and their meanings. These conferences or groups are a great way to get involved as well.

Joint Council of Extension Professionals – (JCEP)

To elevate Extension’s national reputation as an organization of excellence and synergistically leverage the strengths of member associations to foster leadership, collaboration, professional development, scholarly activity, strategic partnerships, and advocate for the profession.

Kansas Joint Council of Extension Professionals – (KJCEP)

Public Issues of Leadership Development (PILD)

National Extension Leadership Development (NELD)

**Social media sites to stay connected:**

Facebook pages to follow

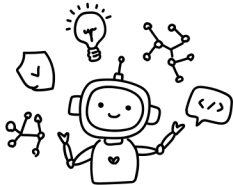
NAE4HYDP Idea Sharing Group

Kansas 4-H Agriculture & Animal Science

Kansas 4-H



## Utah State University Extension – 4-H Discovery Clubs <https://extension.usu.edu/utah4h/discover>



These are an amazing resource from our colleagues of Utah. You can have your copy of any of these by simply sending completing an email request and they will be sent to you in a very short time. Don’t spend time re-inventing the wheel, when they have a great package that is super easy to follow and have 5-8 lessons prepared for your project leaders, teen leaders or yourself to present to our local 4-H youth.

Here are a sample of the 86 Discover 4-H Clubs available

- |                |                       |                |              |
|----------------|-----------------------|----------------|--------------|
| Archaeology    | STEM at home          | Dairy Heifer   | Paper Crafts |
| Family History | Cake Decorating       | Beef           | Robotics     |
|                | Cloverbud Citizenship | Healthy Snacks |              |

