



**KANSAS STATE**  
**UNIVERSITY**

Technology  
Development Institute

**Technology Development Institute**  
510 McCall Road  
Manhattan, Kansas 66502  
[www.ksu.edu/tdi](http://www.ksu.edu/tdi)

# Background...

- Unit in the K-State College of Engineering
- Established in 1985
- Since 1995 Over 2,500 development projects with over 600 clients
- Off campus 22,000 sq. ft. facility
  - Half office & half prototyping shop facility
- 10+ full-time staff members
- Primary focus is to provide technical support in an effort to develop new technologies, grow companies and communities



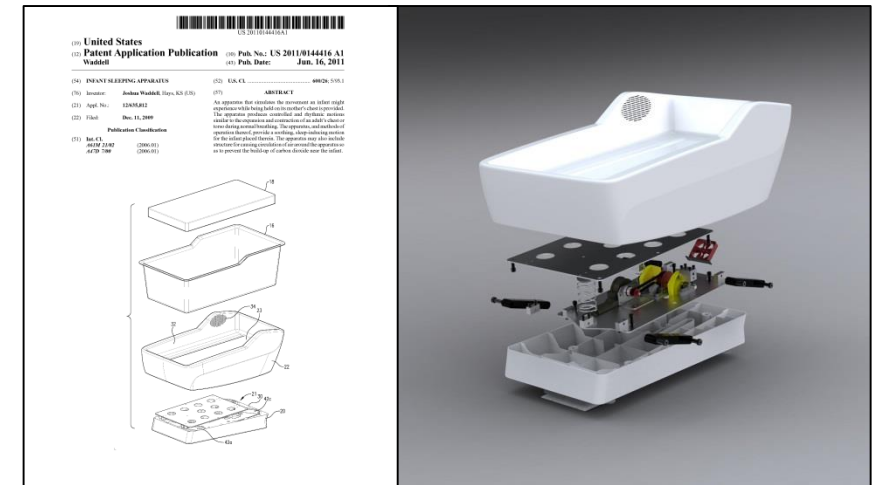
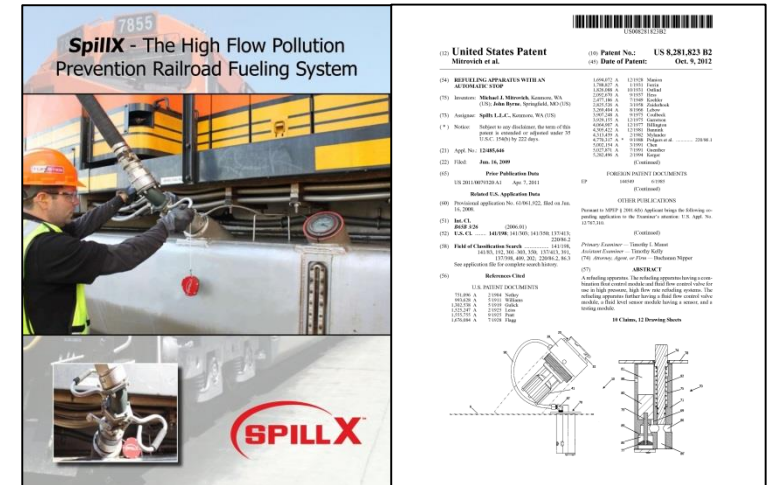
# About TDI...

- Our team consists of experienced engineering and business professionals
- Our customers range from entrepreneurs/inventors up to Fortune 500 companies and include communities, regions, and university researchers
- We work with customers on a contract basis and charge a fee for services provided
  - We do provide assistance to identify possible funding assistance when and where possible

# TDI Services Provided

## Product Development/Business Start-Up Assistance

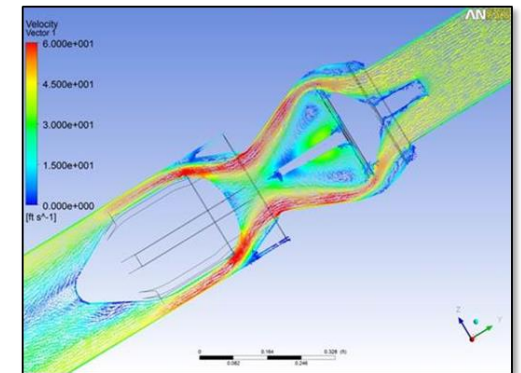
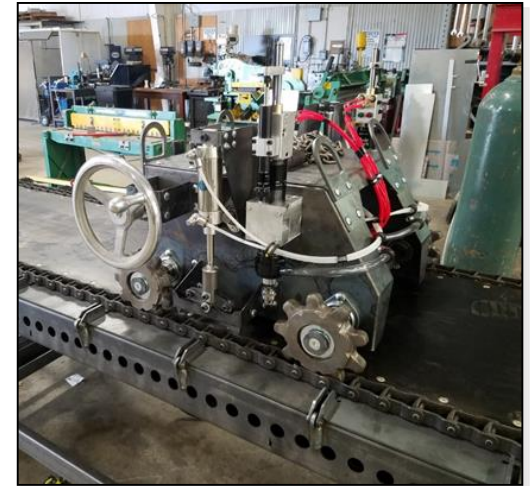
- Customer and competitive research
- Patent/intellectual property assistance
- Business & financing strategy planning
- Product design / computer modeling
- Prototype fabrication
- Product testing
- Creation of marketing and promotional material for the technology
- Tradeshow attendance and marketing support



# TDI Services Provided

## Existing Companies

- Provide engineering resources to address limited capacity
- Automation and/or custom equipment development
- Design verification through computer simulation
- Control system development
- Reverse engineering of competitive products
- Evaluate / identify new product opportunities through technology scouting



# TDI Services Provided

## University Researchers

- Provide engineering and fabrication resources to university research teams to assist in meeting the goals/timelines of grants or sponsored research
- Provide a commercialization partner through a for-profit C-Corporation [www.tallgrassproducts.com](http://www.tallgrassproducts.com)



# TDI Services Provided

## Regional/Community Partners

- Innovation ecosystem platform building
  - Asset mapping
  - Network weaving
  - Analytics developer
- Agile strategy development
- Regional economic and workforce partnering
- University collaboration convening



**GREAT PLAINS**  
TECHNOLOGY & MANUFACTURING  
CLUSTER



# The TDI Internship Experience

- Since 1995 over 650 students have interned at TDI
- Students have been primarily engineering and business majors
- Experience focus is on developing:
  - Technical skills
  - Business perspective
  - Communications skills
  - Professionalism
- Seeking to develop “Managed Internships”





# Thank You

**KANSAS STATE**  
**UNIVERSITY**

Technology  
Development Institute

**Technology Development Institute**

510 McCall Road

Manhattan, Kansas 66502-5034

[www.ksu.edu/tdi](http://www.ksu.edu/tdi)

Phone: 785-532-7044