

First Impressions

Clyde, Kansas

K-State Research and Extension
in Partnership with
The Dane G. Hansen Foundation



Population: 716

Education: HS – 93.0% BS – 17.6%

Median age: 40.9

Poverty rate: 8.6%

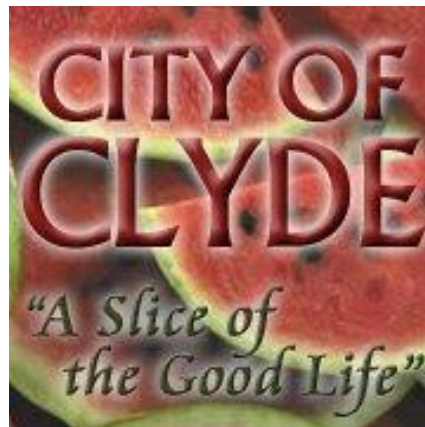
Median income: \$48,984

(Source: factfinder.census.gov)



Web Presence

- City website easy to find and access
- Very informative and appeared to be up to date
- Good links to other interests within the community
- Liked that the schools tab listed higher education choices

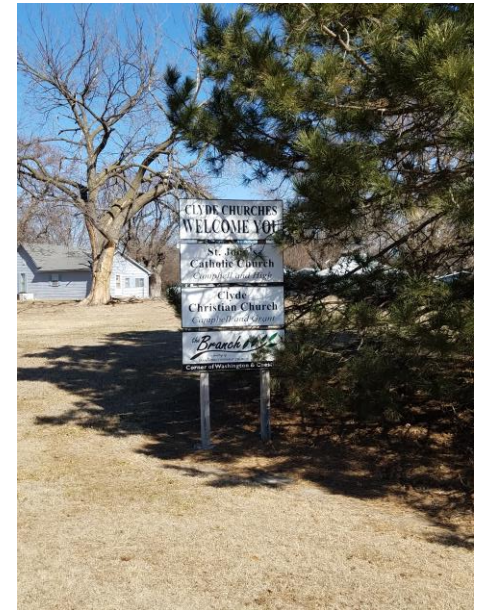


The “Five-Minute” Impression

- Clyde is very clean and well kept
- Everyone we passed waved and made us feel welcome
- Yards and homes were very neat and tidy



- Nice brick sign at both entrances
- Street signs to identify area of interest
- One sign listing churches was partially hidden behind tree

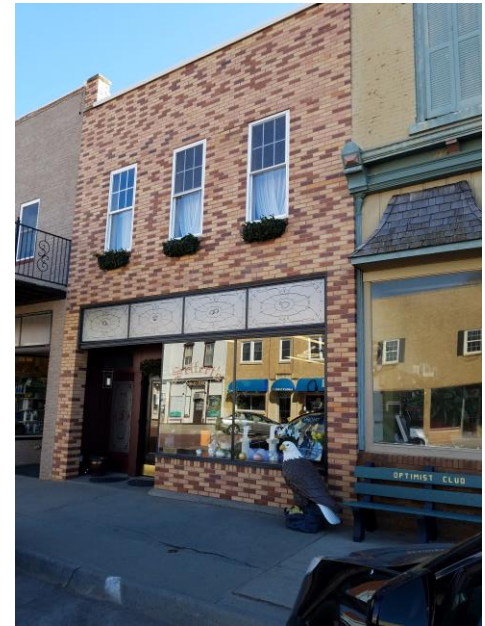


Downtown Business Area

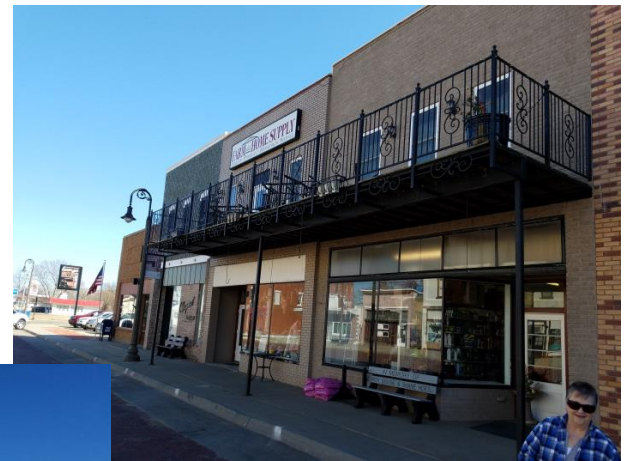
- Buildings in great shape
- Empty buildings painted and well kept
- Downtown digital sign very nice and easy to spot



- Grocery Store, Jewelry Story, Farm & Home Supply, Clothing/Department Store.
- Large selection of merchandise in each business
- No hours posted at any of these businesses
- Hard to identify the type of business housed in each building



- Grocery story was fantastic for a small town but not its identifying sign
- Farm and Home Store was amazing
- Food and prices good at Twinks but no way to know they served food



- Community provided most items needed
- Customer service good
- Greeted at each business and made to feel welcome



- Nice street lighting and banners
- Benches scattered throughout downtown
- Nice landscaping
- Unique window paintings



- Access to Wi-Fi at library
- Trash receptacles placed around downtown



Other Retail Shopping

- No other retail shopping areas
- Only seemed to be one gas station, no hours posted so not sure if gas could be purchased in the evenings
- Would be nice to have a convenience store



Industrial Parks/Commercial Areas

- Seed Dealer on edge of town
- Construction Company
- Tree Service



- AG Services
- Abandoned structure??



Health Care

- Chiropractor and Family Care Center downtown
- Hours were not posted at care center



- Stumbled upon Clyde Family Physicians
- Improved signage needed
- Impressed there are two health care options in town



- Park Villa Nurse Home offers a variety of services: long term care, respite care, adult day care
- Meals on Wheels for Senior
- Senior Center



Housing

- Total housing units: 415
- Owner occupied housing units: 80.8%
- Renter occupied housing units: 19.2%
- Vacant housing units: 66
- Median home value: \$62,600
- Over 50% were built prior to 1940
- (Source – factfinder.census.gov)



- Diverse assortment of houses
- Nice big lawns and yards
- Very few houses for sale



- Very few rentals
- One set of apartments in old school
- A few yards not nicely kept



Schools

- High School for district located in Clyde
- Facilities seem to be nice size



- Parking seems to be limited for larger events
- Liked the student of the month parking spot
- Good community support/school pride
- Community website more helpful than school website



Childcare

- Three childcare services available
- All in home licensed providers
- Listed on the community website

Faith/Religion

- Three churches in the community
- The website listed 2 additional country churches



- Church welcome signs at both entrances
- Cemeteries well marked
- Close-knit community; grocery store closed for 2 hours to attend a local funeral



Civic

- Several civic organizations – Lions Club, Chamber of Commerce, PEO, VFW, Clyde Area Foundation, Beautification Committee, Historical Society



- Organizations listed on city website
- Great asset having multiple organizations for children
- Easy to see downtown area was well maintained, but wasn't visible what groups helped provide or maintain the area



Public Infrastructure

- Side streets clean; sidewalks clear
- Trees trimmed back; no sidewalk obstruction
- Streets and street signs good condition
- Limited parking near ball fields



- City Hall nicely signed
- Hours a bit unusual
- Interior of building could use updating



- Volunteer fire department building downtown
- No obvious evidence of police protection
- Cloud County Crimestoppers sign at park



- Nice large new library
- Hours posted
- Signage advertising summer reading program



- Ballpark, playground and swimming pool all associated in same area
- Well maintained but several fence boards broken



- Community support for ball program
- Again, inadequate parking was expressed



- Golf course is out of town; hard to see turning sign
- Recycling program
- Livestock allowed in town?
- Only couple of areas where clean-up needed



Recreation/Tourism

- Chamber sponsor Watermelon Festival every summer
- New digital sign downtown to advertise events



- Arboretum unique, quite nice
- Beautification Committee maintains downtown courtyard



- Clyde Hotel
- Historical Museum
- Fortunate Findings



Are there any restaurants, specialty shops or attractions that would bring you back?

- Stores geared to service the residents; nothing to attract visitors
- No one mentioned “The Body Shop”



Most Positive Observations!!

- Clyde is one of the cleanest towns I have been to!
- It gives a very nice first impression.
- It is evident the community tries to support their local businesses.
- It was nice to have local stores where an engaged couple could register for their wedding.



Biggest Obstacles/Challenges

- Town geared toward taking care of its residents. Lack of restroom facilities makes it difficult for visitors to spend whole day in the community.
- Lack of housing for new folks moving to town
- No big gas station/convenience store



What will you remember most in six months?

- Clyde was a community of homes and businesses that were very well maintained. You feel that everyone had a vested interest in the community.
- The residential neighborhoods were all nicely maintained.
- The town seems to have a lot of pride in their community, and it shows greatly.



Recommendations

- Promote the arboretum - great attraction
- Improve parking at ballfields
- Post business hours on storefronts
- Improved business or storefront signage
- Possibly improve interior of City Hall
- Promote the “Buddy Walk;” sounds like neat event which could attract visitors



- The Dane G. Hansen Foundation wants to help communities in Northwest Kansas become the best they can be and take great PRIDE in who they are and what they can be.



- <http://danehansenfoundation.org/>