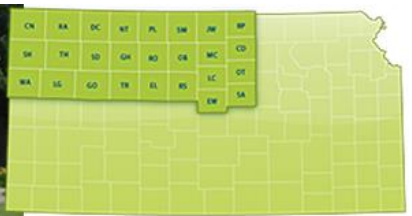


# First Impressions

## Ellis, Kansas

K-State Research and Extension in Partnership  
with

The Dane G. Hansen Foundation



## Ellis Demographics

- Population – 2,113
- Median Household Income - \$40,439
- Average Household Income - \$53,554
- High School Education – 87%, College Education – 29.3 %
- Median resident age is 40.2 years
- Poverty rate is 7.4%



## Web Presence:

- [www.ellis.ks.us](http://www.ellis.ks.us)
- There was some helpful info
- Lacked some resources – healthcare, businesses, amenities
- Good link to school
- Accuracy of links needs to be checked
- Many of the page backgrounds made reading difficult
- Facebook presence



# The “Five-Minute” Impression

- People were friendly and welcoming
- Liked the welcome sign by interstate
- Really liked the memorial park downtown





- Liked the charm of the brick streets & sunflower on streets
- Orange street signs were difficult to read
- Directional or attraction signs were small to nonexistent

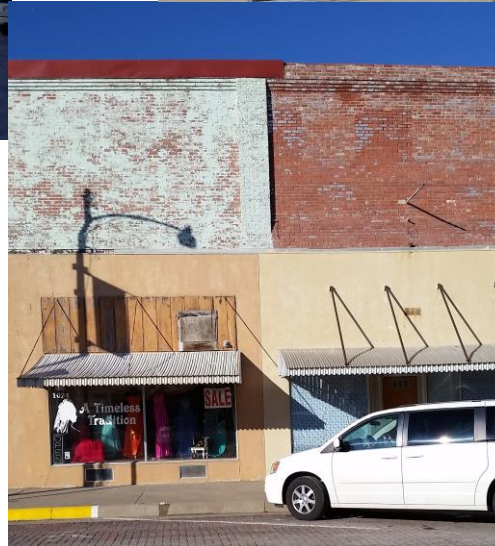


- Welcome sign for Ellis on HWY 40
- HWY 40 entrance from the east could use some clean-up



## Downtown Business Area

- Some downtown buildings were well maintained, others needed some love and a coat of paint. About 50/50.
- Sidewalks well maintained





- Nice variety of businesses – hardware/paint store, thrift store, dress shop, salon, flower shop, clinic, phone company, banks, grocery store, legal services, furniture/antique shop
- Good quality merchandise
- Customer service better in some businesses than other





- Very attractive memorial park
- Convenient parking
- Nice downtown benches and trash receptacles



## Other Retail Shopping Areas

- Love's Store and gas station on I-70 is clean and well-maintained; friendly staff
- Casey's across the street





# Industrial Parks/Commercial Areas

- Strong historical ag presence
- A few hidden gems such as the landscaping, painting and granite businesses



- Industrial area by the interstate





# Health Care Services

- Huge lack of information on healthcare services
- Located a dentist, chiropractic office and healthcare clinic
- Nurse Staffing



- Ellis Nutrition Center
- Nursing home/assisted living facility





# Housing

- Total Number of Housing Units – 973
- Median house value - \$95,521
- Owner occupied – 639 (65.7%)
- Renter occupied – 258 – (26.5%)
- Vacant housing units – 76 (7.8%)



# Housing observations

- Nice mix of housing: low income (housing authority), moderate and new homes
- Didn't see much in the way of for sale or rental signs
- Didn't find list of rental owners on the website





- Interesting mix of large older homes and rock or brick homes





- Definite division between older homes and new homes
- Numerous small homes
- Older un-kept homes in need of attention



# Schools

- Public School – Pre-K through grade school located just off the downtown
- Athletic field west of parks
- District office downtown





- Nice playground
- What is happening to this building by the football field?





- Relatively new high school on the south side of town
- Good promotion off school spirit



- Private School – St. Mary's Catholic Grade School
- Nice playground behind school and church
- Community support for school



## Childcare

- Did not find any information on childcare



## Faith/Religion

- Noted at least 4 churches: Baptist, Methodist, Lutheran and Catholic
- Posters around town for faith sponsored youth events
- Community Thrift Store

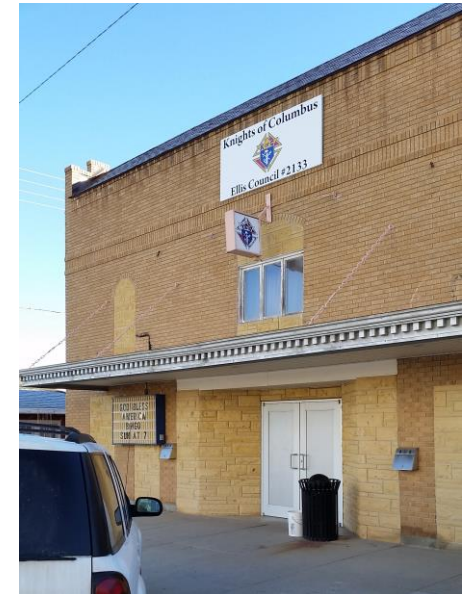






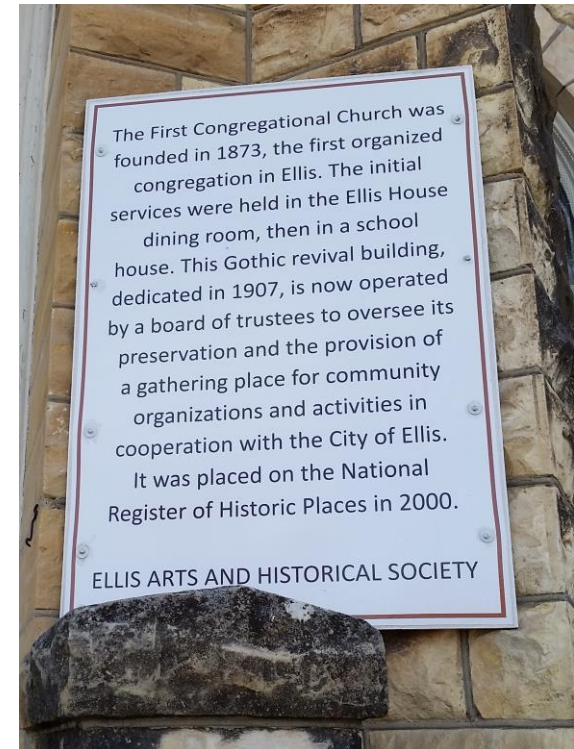
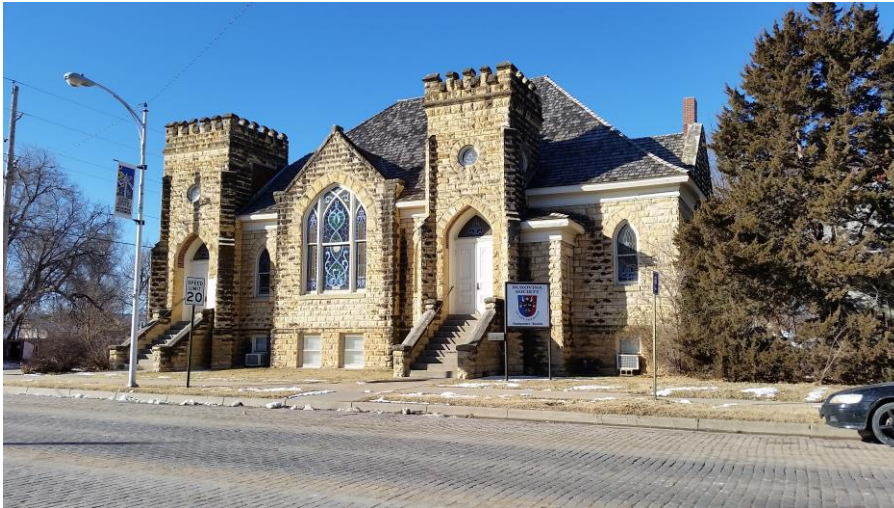
## Civic

- Knights of Columbus, VFW, Bukovina Society, Rotary and Tree City USA were noted.





- Bukovina Society



# Public Infrastructure

- Streets well maintained
- Sidewalks were lacking and inconsistent in the residential areas
- Many area had well maintained landscapes/yards





- Orange streets signs difficult to read
- The few signs, not street signs, were small and not obvious
- Areas of clean-up or restoration needed





- City Office nicely signed
- Staff friendly and helpful
- Received lots of info
- Historical information on display
- City Office, Police and Fire in close proximity



- Library is downtown
- Well maintained
- Event posters could be found around town for activities being held at the library





- Community Recycling Center
- Promotion to be environmentally conscious



- Very active Recreation commission





- Excellent Ball fields
- Fairgrounds





- Creekside Diamonds with Walking Trail
- Pool and Park





- Incredible park system - Chrysler Park, North Park





- Playworld Park





- Ellis Lakeside Campground is a beautiful facility





# Recreation/Tourism

- Home to the Railroad Museum
- The railroad theme is depicted throughout town



- Walter P. Chrysler Boyhood Home/Museum
- Walter P. Chrysler Park
- The golf course





- Memorial Park downtown



- Bukovina Society





- Big Creek – The Beauty and The Beast!





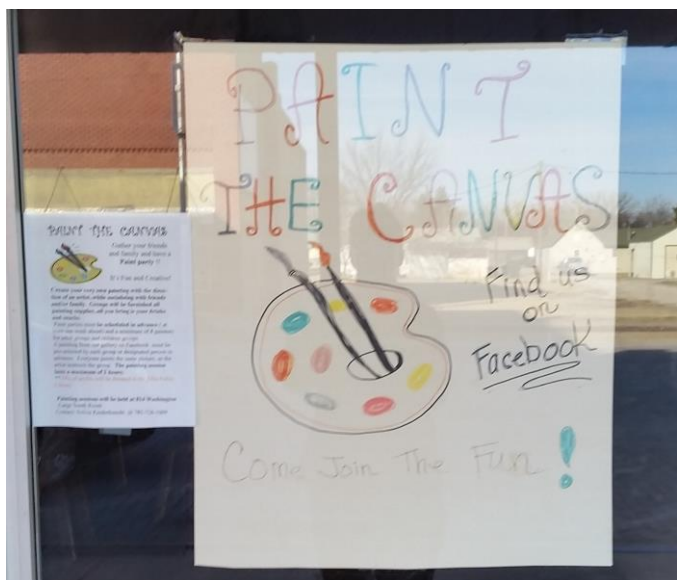
- Ellis Alliance for the promotion of tourism, economic development and the chamber of commerce





# Restaurants, Specialty Shops or Attractions that would bring you back

- There are 3 restaurants but probably none would bring us back
- “Paint the Canvas” fascinated us and could be a reason to return
- Railway Museum was closed and would have been of interest



# Most Positive Observations!!

- Friendly, small town feel
- Good mix of business/service offerings
- Family friendly (parks, school option, sports facilities, etc.)
- Recycling facilities
- Housing mix





# Biggest Obstacles/Challenges

- Lack of noticeable signage for amenities/navigation of town
- Unkempt/rundown properties – both business and residential
- Location – being so near to Hays



# What will you remember the most in six months from now?

- Nice friendly people
- Small town feel
- The museums and attractions
- The difficulty reading the orange street signs

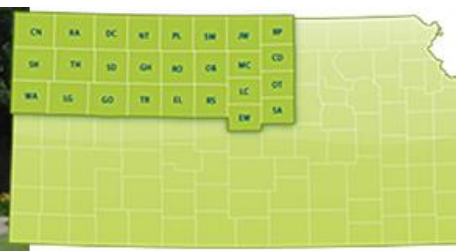




Kansas PRIDE is helping communities create the  
type of place they want to call “Home”



- The Dane G. Hansen Foundation wants to help communities in Northwest Kansas become the best they can be and take great PRIDE in who they are and what they can be.



- <http://danehansenfoundation.org/>