

First Impressions

Logan, Kansas

K-State Research and Extension in Partnership
with

The Dane G. Hansen Foundation



Logan Demographics

- Population – 492
- Median Household Income - \$38,168
- High School Education –89.9 %, College Education – 15.9%
- Median resident age is 53.2 years
- Poverty rate is 23.3%

Source: <http://factfinder2.census.gov>



Web Presence:

- www.discoverlogan.com
- Great website and easy to navigate
- Some pictures may give a false impression of actual appearance

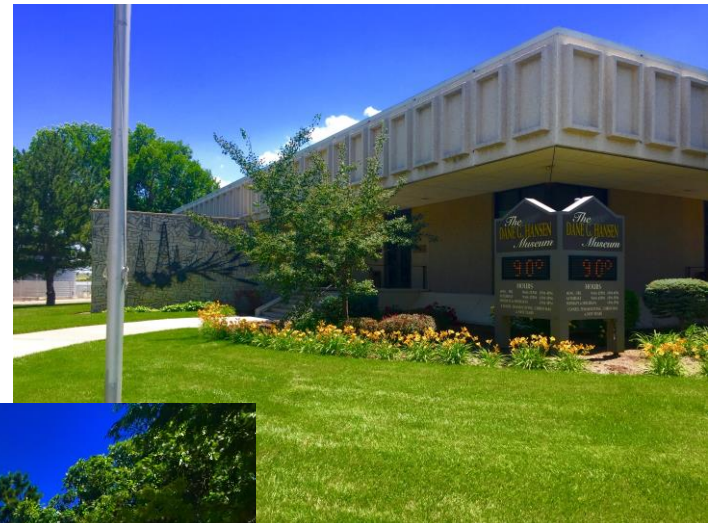


The “Five-Minute” Impression

- Nice welcome sign
- Good signage
- Marque



- Landscaping on Hansen building was wonderful
- Nice wide Main Street
- Rest area with restrooms



- Very friendly – everyone waved
- Needed some mowing



Downtown Business Area

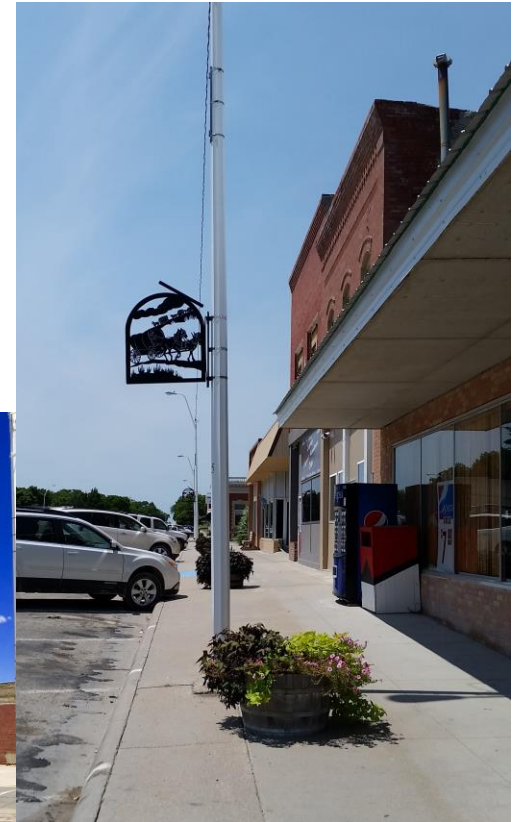
- Buildings well kept with mostly new windows
- Nice variety of shops and services
- Greeted very nicely



- They observed: Grocery store, two banks, newspaper, library, Main Street Pizza, Chy's Grill, hair salon, DGH Oil Shop, Logan Coop, Rangeland Cooperative, Kaisers, Funeral Home, Goddard Manufacturing, Post Office, Fuel Station, storage units, Beer Bucket Liquor, Car Wash, Napa, Pioneer Seed



- Benches on Main Street
- Nice use of flower pots
- Liked the metal pole art with flag holders



- Could a mural be painted on this wall for beautification?
- Portable signage for advertising



Other Retail Shopping Areas

- There really was no other retail shopping areas
- Fuel Service



Industrial Parks/Commercial Areas

- South of town away from residential and business areas
- Agricultural Services



- Welding shop in residential area
- Fencing, clean-up or mowing needed in some areas



Health Care Services

- Logan Medical Clinic closing
- Affiliated with Phillips County Health Care in Phillipsburg
- Nice facility, hope something can be worked out to reopen



- Assisted living (10 bed)
- Logan Manor (50 bed)
- Did not find a senior center



Housing

- Total Number of Housing Units – 322
- Median house value in 2013 - \$63,234
- Occupied – 236
- Vacant - 86
- Home owned – 80.5%
- Homes rented – 19.5%
- Approximately 1/3 of houses were built before 1939



Housing observations

- Nice mix of housing available
- Houses for sale
- Rentals hard to find



- Robert's Place – housing authority
- Observed housing improvement



- A number of houses or structures needing clean up, improvements, or demolition



- Many nice homes with attractive yards



Schools

- All schools located together
- Appear to be adequate in size and well maintained



- Nice athletic field with track
- Good support for school and school spirit



- Might consider some plantings to spruce up the entrance to the school



Childcare

- Nice new facility!
- Great location next to the school
- Any thoughts on signage?
- Is the site listed on the website still in use?



Faith/Religion

- Nice sign at entrance to community
- Observed four well-kept churches
- Nice yards and buildings



- Historic Episcopal Church



Civic

- Lions Club, Chamber of Commerce, BPW, American Legion
- Boy & Girl Scouts, 4-H
- Sign of activity in the restaurant



Public Infrastructure

- Yards well-kept except west side of town
- Most streets in good condition
- Some streets in need of maintenance



- Very well received at the city office
- They have a well done flyer on Logan and other areas
- Fire Department with city building



- Library looked good however it wasn't open
- EMS Building in the north side of town



- Clean-up of some lots could improve the appearance of the community
- Significant amount of ag clutter



- Nice landscaping close to the school



- Park located just off the highway
- Easy access and nice public restrooms
- Water hydrants
- Nice play equipment but could use a few more pieces



- Basketball Courts
- Tennis Courts
- High School Track



- Nice swimming pool
- No signage and wondered about parking



Recreation/Tourism

- Annual Craft Fair
- Episcopal Church
- Towanda School
- Historical Museum



- Dane G. Hansen Museum
- Nice Displays
- Beautifully landscaped



- Logan City Lake – An attraction or distraction?



- Golf Course East of Town
- Could possibly use a larger sign closer to the road
- Regular pick up of trash



Restaurants, Specialty Shops or Attractions that would bring you back

- The Craft Fair
- Display & Events at the Hansen Museum



Most Positive Observations!!

- Friendliness of people
- Main Street very attractive
- Assisted living and nursing home very positive
- Metal pole art project and church signs at entrance are attractive



Biggest Obstacles/Challenges

- Lake area needs attention
- Bindweed and empty buildings downtown
- Clean-up on west side of town



What will you remember the most in six months from now?

- The Dane G. Hansen Museum



Recommendations:

- Check website for accuracy
- Signage for location of city pool and day care
- Possibly reface the city lake sign at the entrance of the community until water level improves
- Landscaping in front of school
- Adding a mural on the side wall of the Post Office
- Some type of physical activity for adults



Kansas PRIDE is helping communities create the type of place they want to call “Home”



- The Dane G. Hansen Foundation wants to help communities in Northwest Kansas become the best they can be and take great PRIDE in who they are and what they can be.



- <http://danehansenfoundation.org/>