

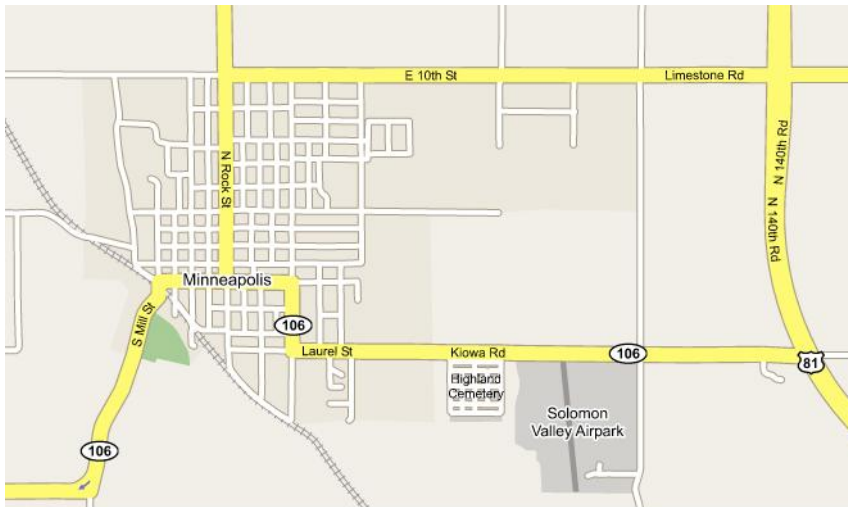
# First Impressions

## Minneapolis, Kansas

K-State Research and Extension in Partnership with  
The Dane G. Hansen Foundation



- Minneapolis – Population 2,051
- 20.6% college educated, 90.2% high school or GED
- Poverty rate is 13.0%
- Median household income is \$53,510
- Average household income is \$58,486
- Median resident age – 36.8 years



- Web Presence:

<http://www.minneapolisorg.org/>

- Good community website
- Blue tabs on green are difficult to read
- Some of the links are inactive or take to incorrect links  
(ex. – CKMHC takes you to the Wellness Center)
- Good to see organizations tab
- Appreciate a separate tab for visitors and link to Rock City



# The “Five-Minute” Impression

- Clean Community
- Pride in home ownership
- Variety of housing options
- Attractive historical buildings downtown





- Attractive welcome signs
- Nice directional signage
- Nice yards and landscaping when entering
- Leaning street name signs
- Faded stop signs



## Downtown Business Area

- Nice historical preservation, even vacant buildings
- Many vacant downtown buildings





# Types of Businesses

- Nice grocery store
- Retail limited to Quilt Store, Health Mart & True Value
- Nice dental and eye Dr. building



# Types of Businesses

- Nice grocery store
- Retail limited to Quilt Store, Health Mart & True Value
- Nice dental and eye Dr. building





- Some downtown clean-up would be beneficial



# Landscaping and streetscaping

- A variety of benches downtown
- Flower boxes along main street were very nice
- Private yards were well maintained





## Other Retail Shopping Areas

- All pretty centrally located
- Floral & Gift Store on north side of town





# Industrial Parks/Commercial Areas

- Industrial park is away from residential area which is nice
- Industrial parks on both the east and west sides of town
- East industrial park much easier to find than the west



# Health Care Services

- Variety of health care providers – 3 physicians, 2 dentists, 1 eye doctor, 1 chiropractor
- Hospital expanding and close to nursing home



- Great planning by Ottawa County Health Planning Commission
- Location of Public Health, Wellness Center, Home Health and Planning Commission all in one location





# Tremendous Senior Services

- Senior Housing
- Assisted Living
- Long term care living



# Housing

- 80.1% of homes were built after 1990
- The average monthly home ownership cost for owners with a mortgage is \$897 (higher than the national average)
- The average monthly rent is \$654 (lower than ntl average)
- 30.8% of households are rented; 62.4% are owned; and 6.8% are vacant
- 55.2% of all housing units have 3 bedrooms or more





- Nice Homes
- Nice multi-family housing
- Beautiful historic homes





# Housing observations

- Homes for sale in varying price ranges
- Lots of smaller housing options – apt./duplexes



# Schools

- Two separate buildings for PreK-6 and 7-12
- Good website, however website name and address do not match – North Ottawa County Schools vs Minneapolis Schools
- Observed one pre-school (community website listed 3)





- School pride evident in community
- Nice playground
- Outdoor Wildlife Learning Site





# Childcare

- No childcare facilities were observed
- Did not find information on the website

# Faith/Religion

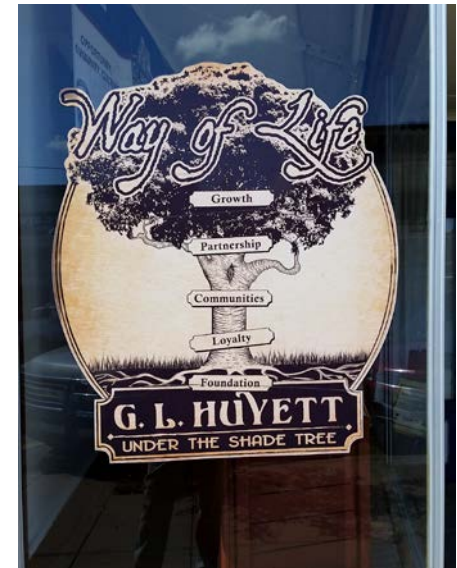
- Variety of denomination
- Facilities were well maintained
- 8 Churches were noted on the website







- Civic
- Chamber of Commerce
- Masonic
- VFW
- Lions Club
- PEO
- Economic Development Foundation
- Love Inc.
- Cub backers
- 4-H
- Boy & Girls Scouts
- G. L. Huyett





# Public Infrastructure

- Red Directional Signs were awesome!
- Street name signs were faded and some leaning



- Overall streets in good condition
- Lots of unpaved streets
- Inconsistent sidewalks
- Some curb and gutters rough





- City Hall attached to the Fire Department. Almost missed the signage
- Did not see the police station nor signs for it
- Did find the sheriffs office and detention center



- Library is very nice
- Nice variety of services





# City Parks

- Markley Grove is well shaded
- Liked the Nature Track at the park
- Road/street to pool is narrow and parking limited
- Pool needs replacing





- Liked the ball fields and fair grounds across the street from the park
- City golf course – concerns with condition of greens



## Recreation/Tourism

- Rock City is worth the excursion and truly a sight to behold with ones own eyes!
- Ottawa County Museum
- Water fall dam





## Other Observations Not Mentioned

- The Community Garden is an awesome thing!
- “Re-tire”ment Garden





# Most Positive Observations!!

- Clean & well maintained homes
- Proximity to Salina
- Pride of home ownership
- Admired your senior “high rise” and the other senior housing which is available
- LOVED the Lion statues in people yards. Great School Spirit!



## Biggest Obstacles/Challenges

- More downtown retail – could be hard to do if so close to Salina
- More eating options would be helpful
- Street improvements
- Clean-up of ag clutter

# What will you remember the most in six months from now?

- Beautiful old houses
- Nicely maintained historic downtown
- Rock City
- The “re-tire”ment Garden- Deserves Honorable Mention of things to be remembered from Minneapolis.

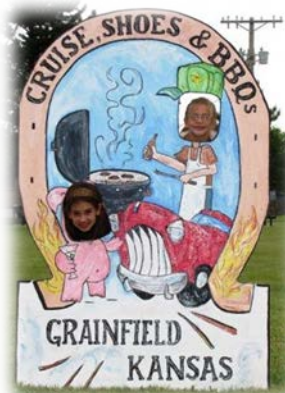


“Minneapolis is a community that feels like home!”

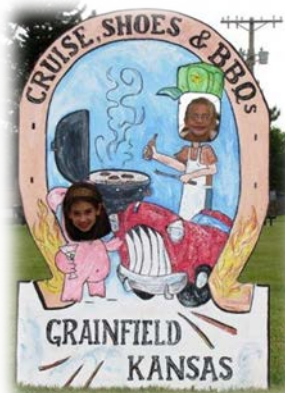




# Kansas PRIDE is helping communities create the type of place they want to call “Home”



# Kansas PRIDE is helping communities create the type of place they want to call “Home”





- The Dane G. Hansen Foundation wants to help communities in Northwest Kansas become the best they can be and take great PRIDE in who they are and what they can be.



- <http://danehansenfoundation.org/>