

First Impressions

Solomon, Kansas

K-State Research and Extension in Partnership
with

The Dane G. Hansen Foundation



Solomon Demographics

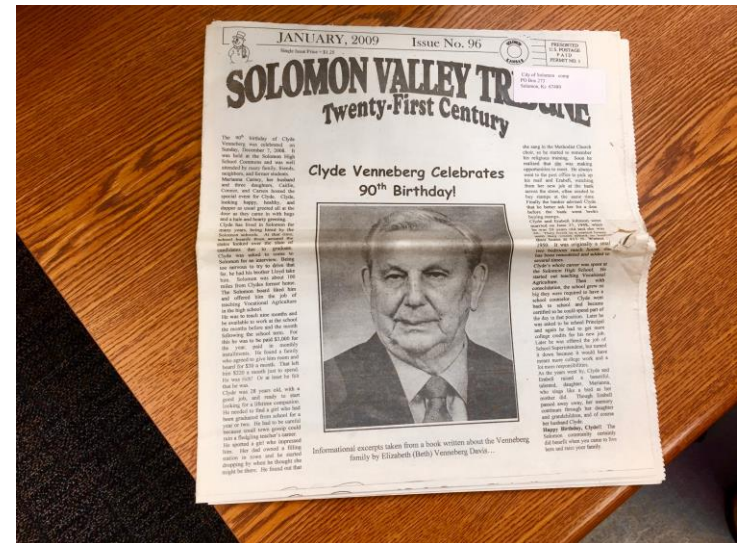
- Population – 1,095
- Median Household Income - \$47,500
- High School Education –90.8 %, College Education – 14.7%
- Median resident age is 36.4 years
- Poverty rate is 6.8%

Source: <http://factfinder2.census.gov>



Web Presence:

- Not much information available online
- County has a website with a link for the city
- City has a Facebook page



The “Five-Minute” Impression

- Quiet bedroom community
- Small downtown with few business
- Greenery downtown is outstanding
- City park has a good location
- Nice Housing



- Difficult to know the community exists
- No welcome sign from I-70 but very nice electronic sign on Old 40
- Unsure where downtown is



Downtown Business Area

- Downtown area neat and in great condition
- Buildings have a coordinated appearance
- Very nice landscaping and flowers



- Businesses are service oriented, not retail
- Has the feel of an office park
- Lack of business signage



- Nice pocket park, tables with umbrellas and pavilion
- Customer service was friendly



- Located the Post Office, Solomon State Bank and E's Café & Pub

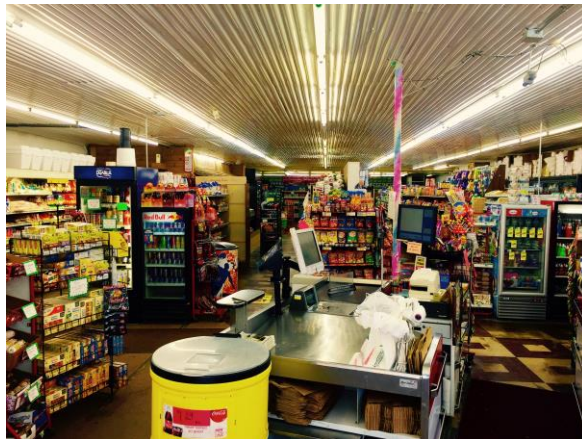


- Some areas close to downtown in need of clean-up
- Many sidewalks and gutters need work and cleaned up



Other Retail Shopping Areas

- Bush's Market is an example of looks can be deceiving



- Liked the mural on the side wall of the grocery store
- Food truck provides another eating opportunity



Industrial Parks/Commercial Areas

- Industrial park off of I-70
- No signage saying property was available



- DS & O Cooperative looks attractive
- Ag presence is evident but facilities appear rundown



- Solomon Corporation is spread throughout town
- They have done a nice job of using trees to cover properties



Health Care Services

- No Medical Services were found
- Active Senior Center



Housing

- Total Number of Housing Units – 465
- Median house value in 2014 - \$
- Occupied – 433
- Vacant - 32
- Home owned – 70.2%
- Homes rented – 29.8%



Housing observations

- Good variety of housing stock
- Several houses for sale
- Rentals are limited
- Apartments for age 55+



- Mixed conditions in same neighborhood



- Some nice well kept homes

Schools

- All ages levels located on one property, nice!
- Looks nice and well maintained
- Good website that provides a lot of information



- School well supported by community
- Nice athletic field
- Playground nice but could use more play equipment



Childcare

- Team was able to find childcare service on KDHE website
- Drive-bys were conducted and one did not appear well maintained

Faith/Religion

- Three churches were noted
- All seemed very nice and were well maintained



Civic

- Saw the Masonic Lodge but didn't see any other building that would house a nonprofit
- Two pavilions in the park looked like they were sponsored by the Lions Club and the Masons
- Boy Scout Cabin



Public Infrastructure

- Streets clearly marked
- Way finder signs would be a great addition



- Sidewalks are random and poorly planned
- Large portion of the community did not have curbs/guttering
- Some clean up work needed



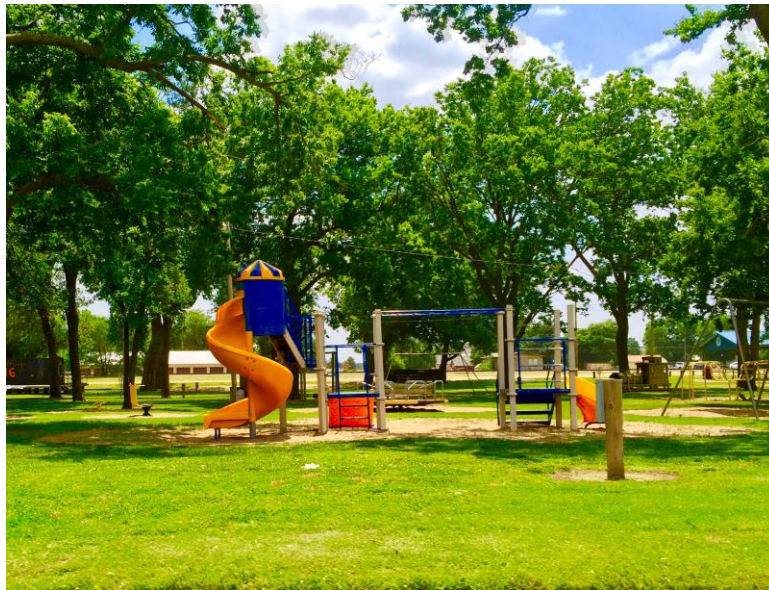
- City Office was easy to find on Main Street
- Staff friendly
- Bars were disturbing



- Nice Fire Department and well maintained
- Observed one police car
- Group missed the library
- Nice memorial bench



- Nice city park with good playground equipment
- Would be nice to have a sidewalk around to be used as a walking track
- Nice stage for performances



- Public restrooms in the park
- Nice shade, seating and historical observations
- Basketball courts available

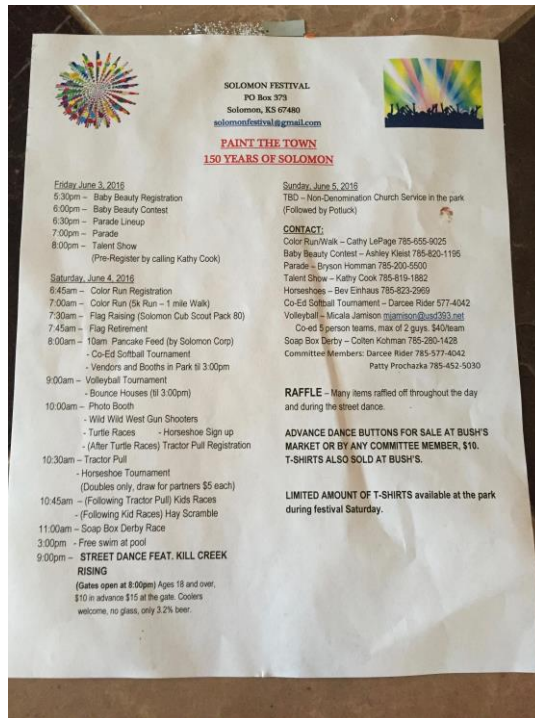


- Nice marquee sign
- Frisbie Golf
- Swimming pool nearby



Recreation/Tourism

- Annual Solomon Festival
- Color Run



- Could you market Shady Lane Drive to attract visitors?
- Nice to see trees replaced as needed



Restaurants, Specialty Shops or Attractions that would bring you back

- E's Café was good
- The park would be a nice place to stop by



Most Positive Observations!!

- Seems like a peaceful, quiet, simple, stable bedroom community to raise a family
- Very good school
- Well maintained and landscaped Main Street



Biggest Obstacles/Challenges

- Lack of things for visitors to do
- Downtown is more of an office park than a downtown
- Lack of medical and auto service



What will you remember the most in six months from now?

- Good town to live, not so much to visit
- One block main street with beautiful landscaping
- Solomon Corporation – they have facilities everywhere
- Food truck



Recommendations:

- Way finders signs in the community
- Welcome sign off of I-70
- Clean-up of some lots and dirt piles
- Sidewalk improvements to make the community more walkable for youth and adults



Kansas PRIDE is helping communities create the type of place they want to call “Home”



- The Dane G. Hansen Foundation wants to help communities in Northwest Kansas become the best they can be and take great PRIDE in who they are and what they can be.



- <http://danehansenfoundation.org/>