

# Welcoming Communities

Simone Elder  
Kansas Sampler Foundation  
PowerUp & Engagement Manager

Connecting Entrepreneurial Communities Conference  
June 27, 2025



**Kansas Sampler**  
**FOUNDATION**

# What is Kansas Sampler Foundation?

- Public 501(c)3 non-profit based near Inman, Kansas
- Mission: Preserve and sustain rural culture
  - We educate Kansans about Kansas
  - We connect and support rural Kansans and their communities





Welcoming Communities  
=  
Communities of the Future



# Communities of the Future

Communities of the future like themselves. They are welcoming to newcomers, interested in supporting all who live in their town and have a desire to engage all residents in moving a community forward.

They find ways to be inclusive and supportive.

They listen. They engage. They believe in - and invest in - themselves.

# Magical Question

Turn to a neighbor and share your answer to this question:

Would you define your community as a community of the future based on this description? Why or why not?

---

PowerUps -  
21-39 year olds who  
are rural by choice



# What did the PowerUps say about being welcomed?

"I felt it took two to five years to be accepted. It takes an investment of time to be accepted."

"There was no welcome type of program. Nothing was online so we had a hard time figuring out how to set up "life" in here."

"We should involve newcomers, welcome them so they want to stay! The thing about a newcomer is that there are no sacred cows, no "we always did it this way" to get in their way of thinking how to do it."

"A neighbor, 85, came over to introduce himself. A few days later he brought over a bag of sweet potatoes from his garden. Later he offered us his hayer. He made us feel so welcomed out here in the country."

## THE ACTION REPORT



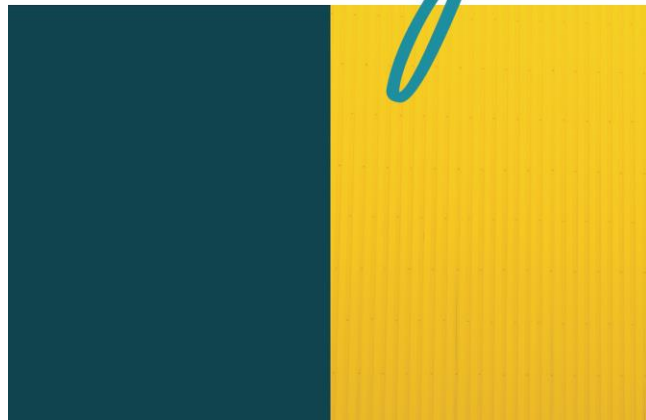
KANSAS

POWER UP & *go*



Kansas

A PROJECT OF  
THE KANSAS SAMPLER FOUNDATION  
& THE OFFICE OF RURAL PROSPERITY



# Who needs welcomed?

- Returnees
- Newcomers
- Tourists

# How do we do it?

- Acting experimentally
- Connecting with intention
- Embracing diversity





# Acting experimentally

## Innovative

Bringing new ideas and perspectives

## Bootstrap

Invest in themselves



# Connecting with Intention

## Sharing Resources

Double a favorite meal and share it

Adopt a “How can I help?” mindset

## Make it social

Organize a newcomers' dinner

Set-up yard games in the front yard  
and invite others to join

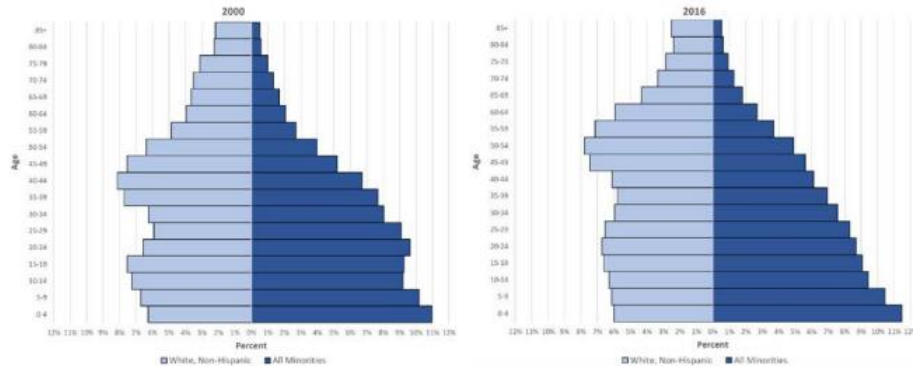


# Embracing Diversity

## A Changing Kansas: Implications for Health and Communities - June 2018

"...population of the state is projected to increase by 25.1 percent by the year 2066, that growth will be concentrated in urban areas of the state. And, nearly every part of the state will be much more racially and ethnically diverse than it is today."

Figure 2.2.4.1c. Population Pyramids for non-Hispanic Whites Versus All Minorities in Kansas, 2000 and 2016



Source: KHI analysis of data from the National Center for Health Statistics' (NCHS) April 1, 2000 bridged-race population estimates and the NCHS's June 2017 Vintage July 1, 2016 bridged-race population estimates.

## Emporia, Kansas

Emporia Spanish Speakers

Google Translate

Emporia Chamber & Visit Emporia



# Welcoming Communities

## What's your one action?



**Communities of the  
Future Activities**

## *Communities of the Future* **ACTIONS**

Take a young person to lunch	Bake a pie or bread and share it	Buy a new neighbor coffee	Double a favorite meal and share with a co-worker
Invite 4 new people over to play board games	Send a new person a thinking of you card	Volunteer at a local food bank, thrift store, or recycling center	Set up yard games in the front yard and invite passersby to join
Attend a community event and share about it on social media	Cut a watermelon and share with an older person	Ask a new acquaintance when their birthday is	Read the newspaper and clip out good news and send it to who its about
Being a flower fairy and anonymously sending someone flowers to help them be seen	Connect with someone by offering a stop for their pet to grab a treat or drink	Give a college student a hug and tell them you're glad to see them at home	Celebrate a strange holiday in your front yard. Invite passersby to join
Explore your local museum with someone of a different age	Go to an activity that is out of your routine	Teach your favorite hobby to someone else	Go on a walk with someone new
Share your summer produce	Sincerely compliment a stranger	Attend a community meeting with someone	Pick up groceries for a new parent

# Thank you!

Email: [simone.elder@kansassampler.org](mailto:simone.elder@kansassampler.org)

Website: [www.kansassampler.org](http://www.kansassampler.org)



**Communities of the  
Future Activities**



**Power Up & Go  
Report**



**KSRE Newcomers'  
Event Guide**