

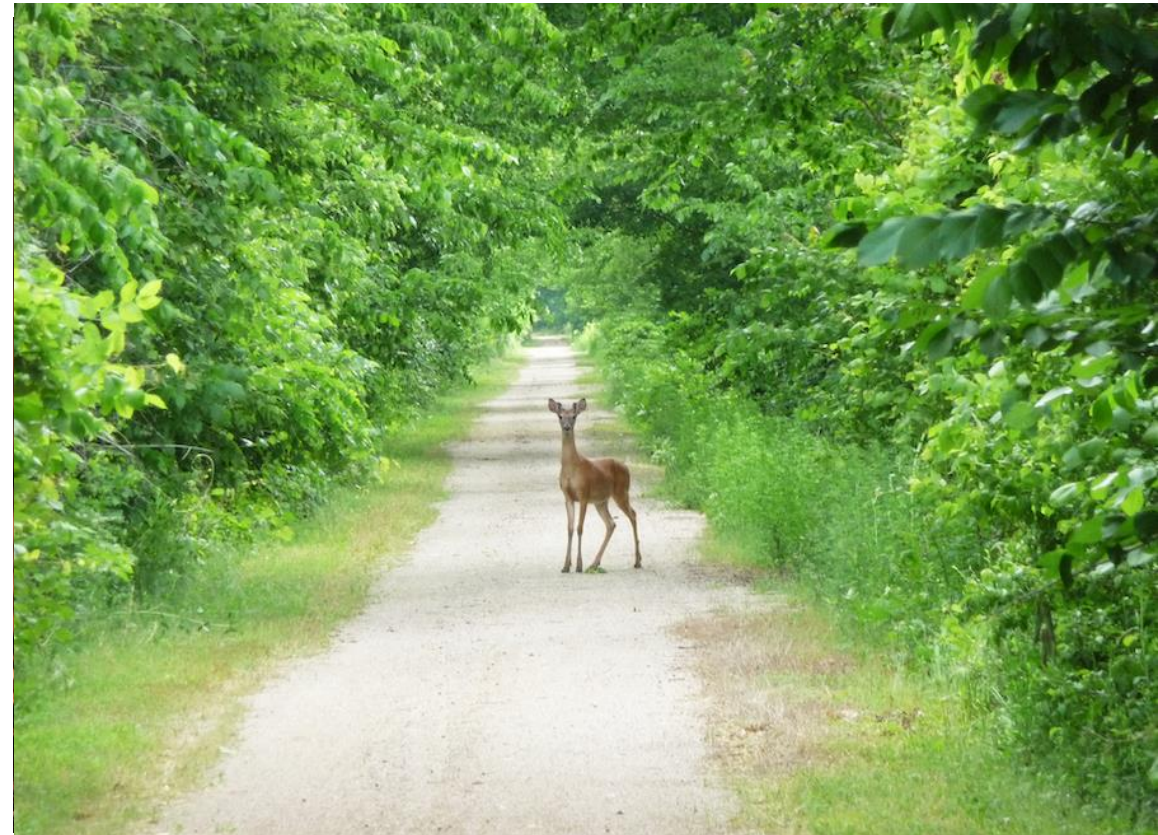


Sunflower Foundation



Trail Talk Tuesday

October 10, 2023



Where Do We Start?

- Where can we build a trail?
- What is the goal of the trail?
- Who will use it?
- What trail surface should we use?

Mike Goodwin



The Land Manager's Perspective Lacey Lies

- What will the trail cost to build?
- Who will pay for construction?
- Who will build the trail?
- Who will maintain the trail?
- Is there local demand/support?
- What is our liability?



PR & Community Support

Nancy Nelson



- Education
- Assigning Roles
- Communications

What About Private Land?

Myron Leinwetter



- Common Sense
- Statutory Protection
- Warning Signage
- Waivers/Releases
- Business Entity
- Contracts, leases, MOUs
- Agritourism Liability Insurance

Universal Design ...

... produces products and environments that make life more comfortable for people as they move through life.

ABA Architectural Barriers Act

ADA Americans with Disabilities Act

Guide:

[U.S. Access Board, Outdoor Developed Areas](#)



Accessibility

ADA Trails or not...

Conditions for Exceptions:

- Not practicable due to terrain
- Cannot accomplish with prevailing construction practices
- Alters the function or purpose of facility or setting
- precluded by law (ESP, NEPA, NHPA, Wilderness)

Should be documented



Trails & Accessibility

Surface – firm and stable

Clear Tread Width 36" with no restrictions

Passing spaces 60"x60"; 2% to 5%; cross; every 1000'

Tread obstacles man-made 1/2" max/natural 2" max

Openings: 1/2" max

Running Slope: 0 to 5% and length

5% to 8.33% max 200 ft. with rest area 60"L x 36" W

8.33% to 10% max 30 ft. with rest area

10% to 12% max 10 ft. with rest area

Cross slope: man-made materials 2% max/natural 5% max

Resting Intervals: when slope exceeds 5%

Protruding Objects: beware



Accessibility: Trailheads

Outdoor Recreation Accessible Route at Trailhead

Connects constructed features
20% of facilities, or one min:

ADA parking

ADA restroom

Shelter and ADA table

ADA drinking fountain

(add a bucket filler)

(add a hydrant for staff use)

Kiosks, bike Fix-it station, etc.





Sunflower Foundation



Mike Goodwin	Ks Trail Council	info@kansastrailscouncil.org
Lacey Lies	Independence	LaceyL@independences.gov
Nancy Nelson	Osage Cuestas	isaacnancy57@gmail.com
Myron Leinwetter	Rossville Toadstrangler	mljhawk@hotmail.com
Jeff Bender	Kansas Wildlife & Parks	jeff.bender@ks.gov





Sunflower Foundation

October 10
November 14
December 12
January 9
February 13
March 12

Where do we start?
Let's get started!
What will this cost?
Where will we find the money?
Trail sustainability
Rail trail issues

2nd Tuesday, Noon-1 pm CT

